

**STUDENT  
ACCOMMODATION**



# KANVAS SOHO

*Cyberjaya*

Kanvas SOHO, Jalan Teknokrat 6  
63000 Cyberjaya, Selangor Darul Ehsan

**Kanvas SOHO** is an affordable 1-bedroom studio that has become a preferred choice among students. Surrounded by amenities including a grocery store, laundrette service, bus stand, food outlets and many more which are just a 5 to 10-minute walk away, the studio apartments are available in 3 options, i.e. Single Studio, Twin Sharing Studio and Triple Sharing Studio. All options have an attached bathroom and basic furniture for students.





### General Facilities

24-hour security · Multi-tier control security access · CCTV surveillance · Swimming pool and Jacuzzi · Gym · BBQ pit · Sky deck/Sky lounge · Restaurants and cafes · Laundrette

### Room Features

Super single bed · Wardrobe · Study table and chair · Air conditioning and ceiling fans · Refrigerator · Wi-Fi · Fire safety equipment · Induction cooker and electric hood · Kitchen island



# SHAFTSBURY RYO

*Putrajaya*

Shaftsbury RYO, Putrajaya  
Jalan Alamanda, Precinct 1, 62000 Putrajaya  
Wilayah Persekutuan Putrajaya

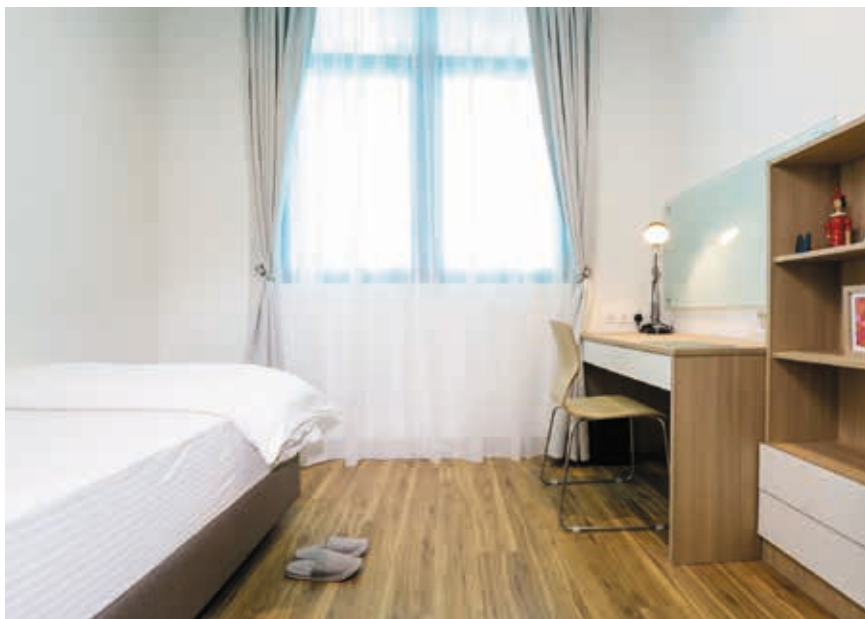
**Shaftsbury RYO Putrajaya**, a third-party accommodation building provided by Ikhasas Group, is conveniently connected to Shaftsbury Putrajaya Retail Mall with food and beverage outlets situated just at the lobby level. It is attached to an exquisite 4-star hotel with quality service and guaranteed security. Additionally, the link bridge to Alamanda Putrajaya means that Shaftsbury RYO Putrajaya is only 5 minutes away from a variety of amenities.

## General Facilities

Cashless laundrette · Shuttle bus to Campus · Saltwater pool · 24-hour security  
 · Wi-Fi · Bi-weekly assisted cleaning  
 · Gym and Parking pass (monthly charges applies)

## Room Features

Super single bed · Mattress protector  
 · Desk and desk chair · Desk lamp  
 · Wardrobe · Bookshelf · Writing board  
 · Ethernet port · Power socket with USB charging port · Shared bathroom for Single and Twin Sharing rooms



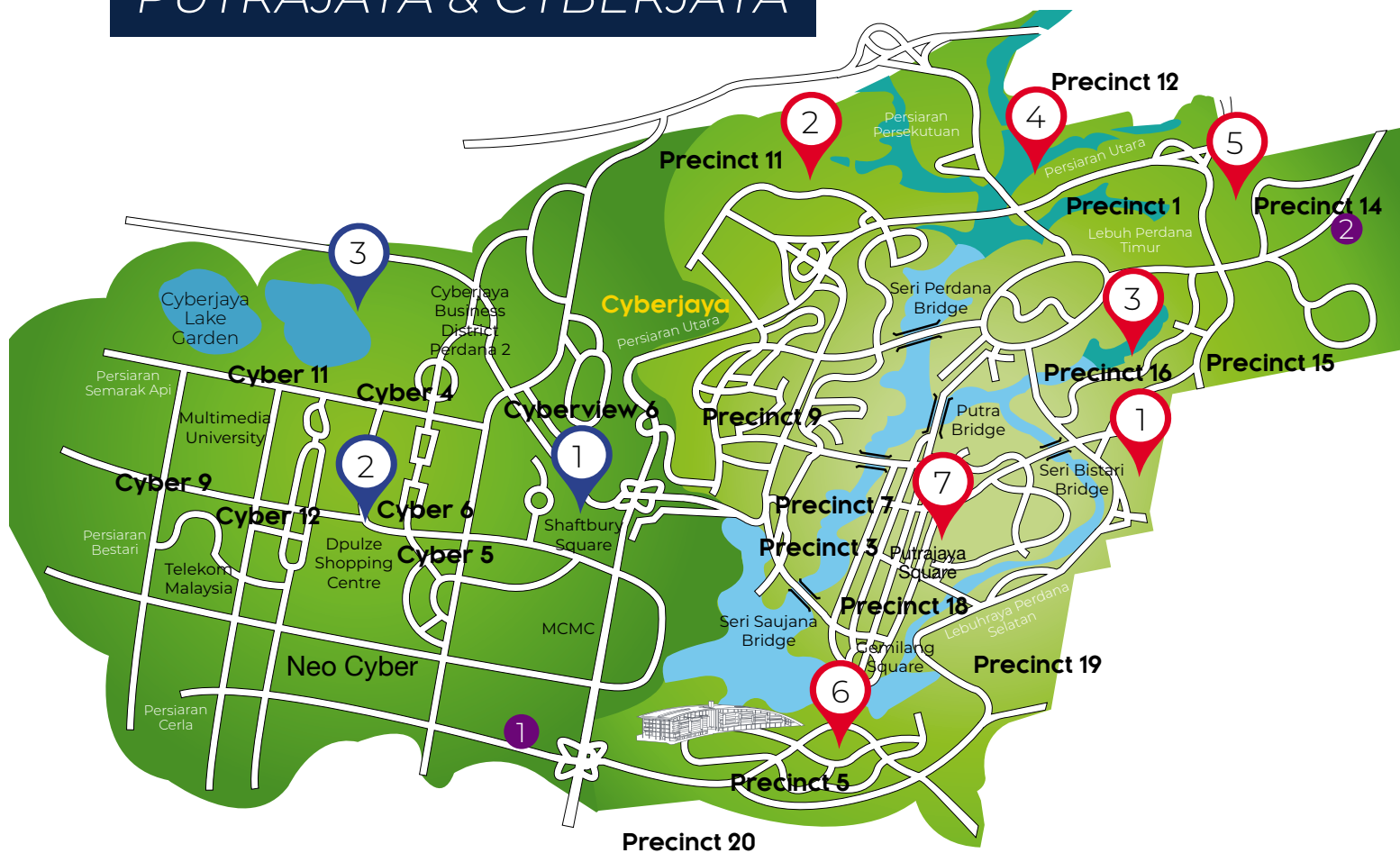
UNIT & ROOM TYPE	RENTAL IN ADVANCE 1 month	DEPOSITS REFUNDABLE AT END OF TENURE			ADMIN CHARGE	TOTAL PAYABLE
		UTILITIES DEPOSIT 1 month	SECURITY DEPOSIT 1 month	ACCESS CARD DEPOSIT		
<b>KANVAS SOHO, CYBERJAYA</b>						
1-bedroom Studio Apartment						
Single (en suite)	1,600	1,600	1,600	100	250	<b>5,150</b>
Twin Sharing (en suite)	850	850	850	100	250	<b>2,900</b>
Triple Sharing (en suite)	600	600	600	100	250	<b>2,150</b>

\* All figures shown above are in Malaysian Ringgit.

UNIT & ROOM TYPE	RENTAL IN ADVANCE 1 month	DEPOSITS REFUNDABLE AT END OF TENURE			ADMIN CHARGE	TOTAL PAYABLE
		UTILITIES DEPOSIT 1 month	SECURITY DEPOSIT 1 month	ACCESS CARD DEPOSIT		
<b>SHAFTSBURY RYO, PUTRAJAYA</b>						
Single	1,210	1,210	1,210	100	265	<b>3,995</b>
Twin Sharing	990	990	990	100	265	<b>3,335</b>
Twin Sharing (en suite)	1,100	1,100	1,100	100	265	<b>3,665</b>
Large Twin Sharing (en suite)	1,155	1,155	1,155	100	265	<b>3,830</b>

\* All figures shown above are in Malaysian Ringgit and subjected to 6% SST. Tourism Tax of RM300.00 per room per person for all foreign passport holders.

# THINGS TO DO IN PUTRAJAYA & CYBERJAYA



## CYBERJAYA

- 1** Dine and shop  
Shaftsbury Square, Cyberjaya
- 2** Watch a movie or surf the racks  
DPULZE Shopping Centre, Cyberjaya
- 3** Get into a paintball war  
Cyberjaya Paintball Park

## ACCOMMODATION

- 1** Kanvas SOHO
- 2** Shaftsbury RYO Putrajaya

## PUTRAJAYA

- 1** Guided Eco Ride at Putrajaya 'City in the Garden'  
Call for pickup options (017-882 3847)
- 2** Picnic or ride a bike among lush greenery  
Putrajaya Botanical Garden
- 3** Photograph tropical flowers and walk through gardens  
Anjung Floria
- 4** Walk or cycle through beautiful freshwater wetlands  
Wetlands Park Putrajaya
- 5** Shop, skate on ice or do extreme sports!  
IOI City Mall (Ice Scape Ice Rink & District 21)
- 6** Jetski, canoe, swim, kayak or sail (also, enjoy karaoke, sauna, squash and gym facilities)  
Marina Putrajaya
- 7** Play your favourite sport here! (Football, basketball, netball or volleyball)  
Taman Pancarona

# HOW TO APPLY & MORE INFORMATION

## STEP

1

When you've decided on your top three choices for student accommodation, hand in the completed application form. Thereafter, please pay the deposit amount of your chosen accommodation as a booking confirmation payment within seven (7) days of receiving the application acceptance confirmation. Submit the payment proof via email to [MYaccommodation@hw.ac.uk](mailto:MYaccommodation@hw.ac.uk).

Tenancy agreement is fixed at:

- Foundation student: 13-month contract
- Undergraduate and postgraduate student: 12-month contract

## STEP

2

Once checked in, please pay the remaining payment after receiving an invoice. Please note:

- \* For Kanvas SOHO, the University will collect the rental on a quarterly basis (every 3 months), and payment must be made one (1) month in advance
- \* For Shaftsbury RYO, rental is collected directly by the accommodation provider on a monthly basis

## STEP

3

Application Deadline:

**July Intake:** 8 August 2022

**September Intake:** 30 September 2022

**January Intake:** 20 January 2023

**April Intake:** 5 May 2023

## STEP

4

\* All deposits will only be refunded when students check out from the accommodation and when all other monies due to Heriot-Watt University Malaysia and the accommodation provider have been settled.

If you have any questions about our accommodation, please contact us at:  
HWUM Student Accommodation | Heriot-Watt University Malaysia | Ground Floor | East Wing

+603 8894 3888 Ext: 43866/ 43603/ 43833

+6012 320 7599/ +6017 362 5250/ +6012 357 5699

[MYaccommodation@hw.ac.uk](mailto:MYaccommodation@hw.ac.uk) [www.hw.edu.my](http://www.hw.edu.my)