

Agreed governance arrangements for Athena Swan at Heriot-Watt University

GEDI has agreed the following governance arrangements. In summary: establishment of (a) a dedicated Programme Board overseeing delivery of the Institutional and School Athena Swan action plans and other key programme deliverables (b) an Athena Swan Advisory Group made up of University stakeholder representatives (c) Utilisation of the Annual Planning Round to embed action resourcing, reporting and monitoring. See *Fig 1*.

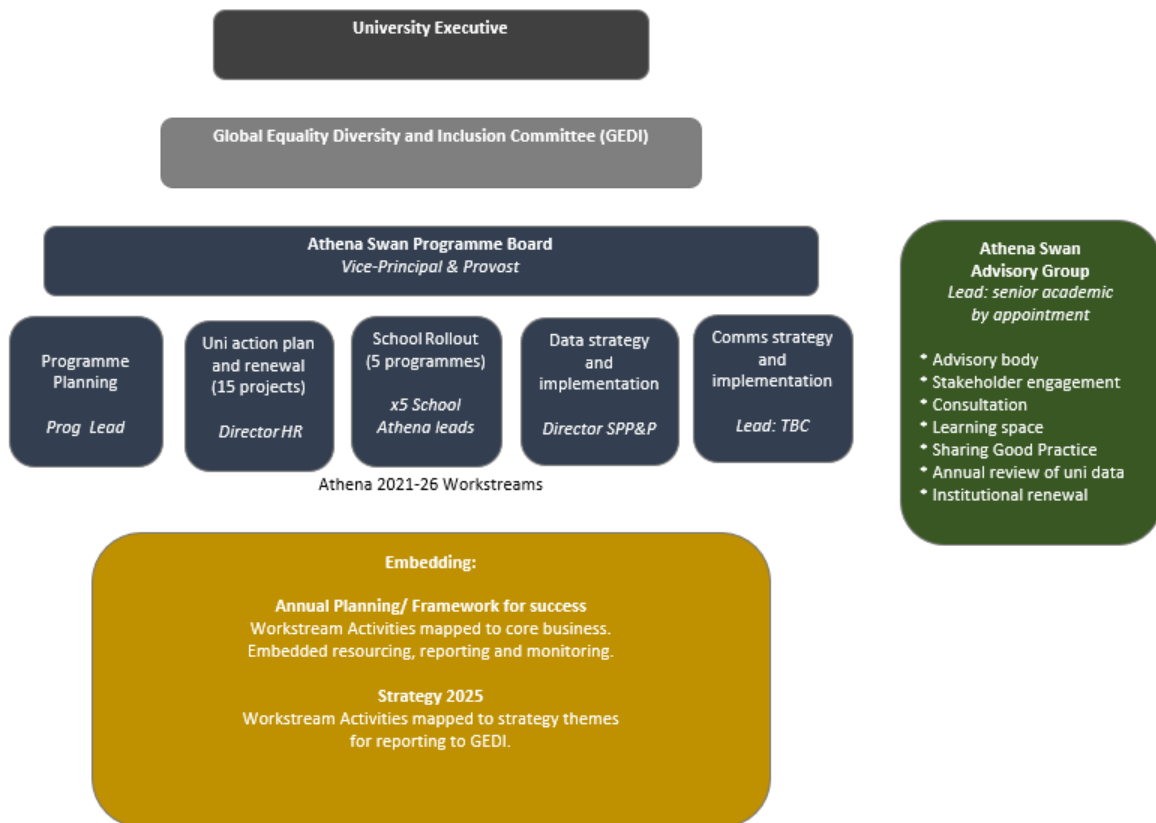


Fig. 1: Governance arrangements for Athena Swan at Heriot-Watt University