

Annual Statistics 2010-2011

ANNUAL STATISTICS 2010/11

Contents

	Page(s)
1 PROFILE AT A GLANCE	3
2 STUDENT NUMBERS	5 – 21
3 UNDERGRADUATE STUDENT APPLICATIONS & ADMISSIONS	22 – 27
4 FIRST DEGREES AWARDED	28
5 UNDERGRADUATE STUDENT PROGRESS	29 – 32
6 HIGHER DEGREES AWARDED	33
7 GRADUATE FIRST DESTINATIONS	34 – 35
8 NATIONAL STUDENT SURVEY RESULTS	36 – 37
9 STAFF NUMBERS	38

If you would like a large print version of this document please contact the Executive Support Service, Tel: 0131 451 3738.

Heriot-Watt University: Profile at a glance

Founded: 1821. Granted university status by Royal Charter in 1966.

Campus Locations: Edinburgh, Galashiels, Orkney, Dubai.

The University's main Edinburgh campus comprises 380 acres of parkland and incorporates the Edinburgh Research Park established in 1971 as the first science park of its kind in the UK. In excess of 40 companies are currently based on the Research Park. In 2009, work was completed to co-locate with Scottish Borders College at the Netherdale Campus in Galashiels.

The Heriot-Watt University Dubai Campus was established in 2005 and accepted its first cohort of students in the autumn of that year. At the start of 2010/11 the student population had reached almost 1,800.

The University's International Centre for Island Technology based in Stromness, Orkney Islands, is part of the University's Institute of Petroleum Engineering. The Centre concentrates on renewable energy, particularly marine energy.

Student population:

On-campus (Edinburgh, Galashiels, Dubai, Orkney - headcount):-

- 6,594 undergraduate (including exchange and visiting students)
- 2,167 postgraduate taught course
- 522 postgraduate research

On-campus (Scottish Borders Campus - headcount):-

- 519 undergraduate (including exchange and visiting students)
- 29 postgraduate taught course
- 16 postgraduate research

About one third of the University's 'on campus' students studying in Scotland are from outside of the UK making Heriot-Watt one of the most internationally diversified of any UK universities.

Transnational programmes (independent study in around 150 countries worldwide or through a network of 46 Approved Learning Partners ALPs). In HESA reporting year ending 31 July 2010 there were:

- 10,437 active ALP students
- 2,752 active independent (distance learning) students

Staff population (Scottish Campus):

Total: 1,754 (headcount) of which:-

- 479 academic
- 175 research staff
- 529 professional (non academic)
- 571 other staff (incl non standard contract staff)

STUDENT NUMBERS (ON CAMPUS IN SCOTLAND): 2008/09 - 2010/11

UNDERGRADUATE students by attendance level and gender

	2010/11					2009/10					2008/09						
	ft	pt	Total	%	% change yr/yr	ft	pt	Total	%	% change yr/yr	ft	pt	Total	%	% change yr/yr		
Total	5363	133	5496	100.0	-6.3	Total	5783	81	5864	100.0	9.6	Total	5253	98	5351	100.0	3.2
Female	2219	45	2264	41.2	-4.2	Female	2337	27	2364	40.3	6.0	Female	2185	46	2231	41.7	1.7
Male	3144	88	3232	58.8	-7.7	Male	3446	54	3500	59.7	12.2	Male	3068	52	3120	58.3	4.3

Includes home students on a year abroad or on placement as part of their studies.

Excludes registered incoming exchange, non-graduating and visiting students. These are detailed on page 13.

POSTGRADUATE TAUGHT COURSE students by attendance level and gender

	2010/11					2009/10					2008/09						
	ft	pt	Total	%	% change yr/yr	ft	pt	Total	%	% change yr/yr	ft	pt	Total	%	% change yr/yr		
Total	1377	92	1469	100.0	-7.0	Total	1320	259	1579	100.0	21.5	Total	1052	248	1300	100.0	11.0
Female	481	31	512	34.9	0.6	Female	433	76	509	32.2	10.9	Female	368	91	459	35.3	10.3
Male	896	61	957	65.1	-10.6	Male	887	183	1070	67.8	27.2	Male	684	157	841	64.7	11.4

Excludes staff registrations for the Postgraduate Certificate in Academic Practice.

Excludes very small numbers of registered incoming exchange, non-graduating and other visiting students.

POSTGRADUATE RESEARCH students by attendance level and gender

	2010/11					2009/10					2008/09						
	ft	pt	Total	%	% change yr/yr	ft	pt	Total	%	% change yr/yr	ft	pt	Total	%	% change yr/yr		
Total	479	43	522	100.0	5.9	Total	433	60	493	100.0	2.5	Total	417	64	481	100.0	4.1
Female	145	13	158	30.3	12.1	Female	122	19	141	28.6	0.0	Female	117	24	141	29.3	11.0
Male	334	30	364	69.7	3.4	Male	311	41	352	71.4	3.5	Male	300	40	340	70.7	1.5

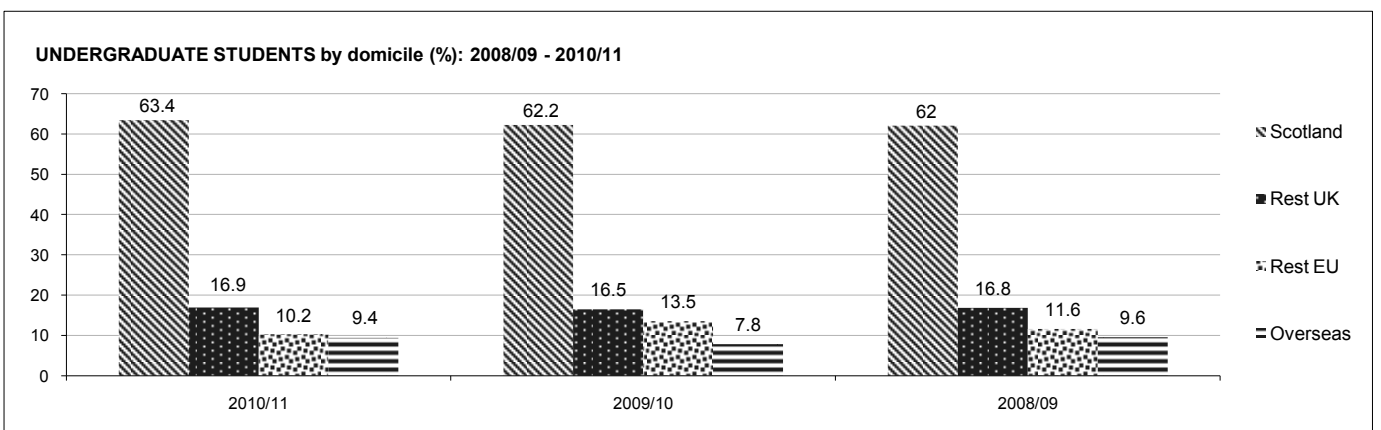
Includes small numbers of active registered students recorded as "writing up".

Excludes small numbers of registered incoming exchange, non-graduating and visiting scholars.

ALL STUDENTS by fees status (UK, other EU, overseas)

	2010/11					2009/10					2008/09						
	UK	EU	OS	Total	% change yr/yr	UK	EU	OS	Total	% change yr/yr	UK	EU	OS	Total	% change yr/yr		
Total	4918	947	1622	7487	-5.7	Total	5154	1323	1459	7936	11.3	Total	4737	1143	1252	7132	4.6
UG	4416	562	518	5496	-6.3	UG	4613	791	460	5864	9.6	UG	4219	708	424	5351	3.2
PGT	325	303	841	1469	-7.0	PGT	367	447	765	1579	21.5	PGT	363	342	595	1300	11.0
PGR	177	82	263	522	5.9	PGR	174	85	234	493	2.5	PGR	155	93	233	481	4.1

Refer to inclusions/exclusions listed above.



UNDERGRADUATE STUDENTS BY SCHOOL/PGI/PROGRAMME AND FEE TYPE: 2008/09 - 2010/11
On-campus - Scotland

SCHOOL/Programme	2010/11						2009/10						2008/09																									
	UK	EU	OS	EU	OS	UK	EU	OS	EU	OS	UK	EU	OS	EU	OS	UK	EU	OS	Full Tot.																			
UNIVERSITY TOTAL	4323	93	4416	534	28	562	506	12	518	5496	4585	60	4645	736	13	749	462	8	470	5864	4140	79	4219	698	10	708	362	62	424	5351								
BUILT ENVIRONMENT	605	14	619	83	3	86	45	45	750	638	17	655	91	4	95	37	1	38	788	579	9	588	92	3	95	38	3	41	724									
Architectural Engineering	62	1	63	7	7	11	11	81	58	58	7	58	7	7	5	5	5	70	45	1	46	7	7	4	4	4	4	4	57									
Civil Engineering	259	5	264	54	2	56	17	17	337	265	13	278	63	1	64	13	13	355	240	4	244	55	2	57	4	4	4	305										
Construction Management & Surveying	186	6	192	7	1	8	8	208	199	2	201	11	2	13	11	1	12	226	170	3	173	14	1	15	11	2	13	201										
Urban Studies	98	2	100	15	15	9	9	124	116	2	118	10	1	11	8	8	137	124	1	125	16	16	19	1	20	161												
ENGINEERING & PHYSICAL SCIENCES	1050	36	1086	154	20	174	105	3	108	1368	1089	16	1105	284	2	286	94	94	1485	1018	12	1030	230	1	231	69	69	1330										
Chemical Engineering	198	6	204	9	9	26	2	28	241	193	1	194	13	13	24	24	24	231	152	152	14	14	13	13	13	13	179											
Chemistry	206	1	207	30	30	5	5	242	206	206	78	78	4	4	4	4	288	219	219	44	44	5	5	5	5	268												
Combined Studies (BSc/BEng)	94	25	119	6	20	26	5	1	151	132	10	142	20	1	21	12	12	175	119	8	127	26	1	27	9	9	163											
Electrical, Electronic & Computer Engineering	121	3	124	23	23	29	29	176	119	119	32	32	21	21	21	21	172	116	1	117	30	30	20	20	20	167												
Mechanical Engineering	308	1	309	45	45	37	37	391	313	4	317	92	1	93	30	30	440	295	3	298	76	76	21	21	21	395												
Physics	123	123	41	41	3	3	3	167	126	1	127	49	49	3	3	3	179	117	117	40	40	1	1	1	1	158												
LIFE SCIENCES	533	16	549	46	3	49	17	17	615	585	6	591	78	1	79	14	14	684	483	6	489	66	2	68	12	12	569											
Biology	223	8	231	31	3	34	15	15	280	250	4	254	65	65	12	12	331	221	2	223	53	1	54	10	10	287												
Psychology	165	2	167	12	12	2	2	181	162	2	164	9	9	2	2	2	175	122	122	9	1	10	2	2	2	134												
Sport & Exercise Science	145	6	151	3	3	3	3	154	173	173	4	1	5	5	5	178	140	140	4	144	4	4	4	4	4	148												
MANAGEMENT & LANGUAGES	1007	19	1026	173	173	202	5	207	1406	1113	12	1125	206	5	211	196	6	202	1538	1014	44	1086	232	4	236	136	59	195	1489									
Accountancy & Finance	282	7	289	17	17	76	3	79	385	336	5	341	28	28	72	2	74	443	302	3	305	29	2	31	51	3	54	390										
Combined Studies (BA)	22	22	5	5	7	1	8	35	22	1	23	13	13	10	10	10	46	22	1	23	6	1	7	3	3	33												
Economics	113	2	115	26	26	20	20	161	120	3	123	37	2	39	18	1	19	181	107	3	110	31	31	22	1	23	164											
Languages	246	7	253	51	51	3	3	307	247	247	57	57	2	2	2	306	228	1	229	60	60	10	10	10	10	299												
Management	291	2	293	57	57	52	1	53	403	319	3	322	61	1	62	38	3	41	425	324	3	327	50	50	46	1	47	424										
Management (Scottish Borders Campus)	53	1	54	17	17	8	8	79	69	69	10	1	11	8	8	8	88	31	31	56	56	4	2	6	6	93												
Management (Link Programme)																																						
Foundation English/Interpreting Studies																																						
MATHEMATICAL & COMPUTER SCIENCES	644	6	650	59	59	129	4	133	842	658	3	661	68	1	69	114	114	844	576	2	578	66	66	93	93	93	737											
Actuarial Mathematics & Statistics	189	1	190	12	12	87	87	289	204	204	15	15	81	81	81	81	300	192	192	15	15	65	65	65	65	272												
Computer Science	205	3	208	34	34	17	4	21	263	202	2	204	41	1	42	10	10	256	181	181	42	42	16	16	16	239												
Mathematics	250	2	252	13	13	25	25	290	252	1	253	12	12	23	23	23	288	203	2	205	9	9	12	12	12	226												
TEXTILES & DESIGN	484	2	486	19	2	21	8	8	515	502	6	508	9	9	7	1	8	525	470	6	476	12	12	14	14	14	502											
Combined Studies	9	1	10	1	1	1	1	11	495	5	500	9	9	7	7	7	8	517	10	1	11	11	11	11	11	491												
Textiles & Design	475	1	476	18	2	20	8	8	504	7	1	8	8	8	8	8	8	517	460	5	465	12	12	14	14	14	491											

Note inclusions/exclusions detailed on page 5

UNDERGRADUATE FRESHER STUDENTS BY GENDER: 2008/09 - 2010/11
On-campus - Scotland

	2010/11		2009/10		2008/09				
	Gend.	%	Gend.	%	Gend.	%			
UNIVERSITY TOTAL		1520	41.4		2210	38.3		1913	39.9
BUILT ENVIRONMENT		168	17.3		269	17.5		226	24.8
Architectural Engineering	F	3	11.1	F	7	25.9	F	3	20.0
	M	24	88.9	M	20	74.1	M	12	80.0
Total		27			27			15	
Civil Engineering	F	9	15.3	F	19	15.1	F	12	13.6
	M	50	84.7	M	107	84.9	M	76	86.4
Total		59			126			88	
Construction Management & Surveying	F	6	12.2	F	8	9.9	F	17	25.4
	M	43	87.8	M	73	90.1	M	50	74.6
Total		49			81			67	
Urban Studies	F	11	33.3	F	13	37.1	F	24	42.9
	M	22	66.7	M	22	62.9	M	32	57.1
Total		33			35			56	
ENGINEERING & PHYSICAL SCIENCES		422	24.4		570	17.7		522	17.8
Chemical Engineering	F	21	27.3	F	13	14.8	F	9	13.4
	M	56	72.7	M	75	85.2	M	58	86.6
Total		77			88			67	
Chemistry	F	32	45.7	F	57	46.7	F	42	41.6
	M	38	54.3	M	65	53.3	M	59	58.4
Total		70			122			101	
Combined Studies (BSc/BEng)	F	13	36.1	F	8	21.1	F	15	27.3
	M	23	63.9	M	30	78.9	M	40	72.7
Total		36			38			55	
Electrical, Electronic & Computer Engineering	F	3	4.3	F	4	5.5	F	3	4.6
	M	67	95.7	M	69	94.5	M	62	95.4
Total		70			73			65	
Mechanical Engineering	F	13	13.0	F	9	5.5	F	14	8.9
	M	87	87.0	M	156	94.5	M	143	91.1
Total		100			165			157	
Physics	F	21	30.4	F	10	11.9	F	10	13.0
	M	48	69.6	M	74	88.1	M	67	87.0
Total		69			84			77	
LIFE SCIENCES		161	60.2		274	50.7		201	49.3
Biology	F	39	52.0	F	73	54.1	F	52	50.5
	M	36	48.0	M	62	45.9	M	51	49.5
Total		75			135			103	
Psychology	F	51	86.4	F	47	62.7	F	28	75.7
	M	8	13.6	M	28	37.3	M	9	24.3
Total		59			75			37	
Sport & Exercise Science	F	7	25.9	F	19	29.7	F	19	31.1
	M	20	74.1	M	45	70.3	M	42	68.9
Total		27			64			61	
MANAGEMENT & LANGUAGES		376	53.7		592	46.8		512	48.8
Accountancy & Finance	F	33	39.8	F	56	36.4	F	53	41.4
	M	50	60.2	M	98	63.6	M	75	58.6
Total		83			154			128	
Combined Studies (BA)	F			F	7	35.0	F		
	M			M	13	65.0	M		
Total					20				
Economics	F	11	27.5	F	15	22.7	F	16	30.2
	M	29	72.5	M	51	77.3	M	37	69.8
Total		40			66			53	
Languages	F	90	70.3	F	102	60.7	F	84	60.0
	M	38	29.7	M	66	39.3	M	56	40.0
Total		128			168			140	
Management	F	49	59.8	F	64	55.2	F	64	52.9
	M	33	40.2	M	52	44.8	M	57	47.1
Total		82			116			121	
Management (Scottish Borders Campus)	F	19	44.2	F	33	48.5	F	33	47.1
	M	24	55.8	M	35	51.5	M	37	52.9
Total		43			68			70	
MATHEMATICAL & COMPUTER SCIENCES		260	30.0		310	32.3		267	31.8
Actuarial Mathematics & Statistics	F	32	32.7	F	37	37.0	F	44	44.0
	M	66	67.3	M	63	63.0	M	56	56.0
Total		98			100			100	
Computer Science	F	15	16.7	F	14	13.0	F	7	8.0
	M	75	83.3	M	94	87.0	M	81	92.0
Total		90			108			88	
Mathematics	F	31	43.1	F	49	48.0	F	34	43.0
	M	41	56.9	M	53	52.0	M	45	57.0
Total		72			102			79	
TEXTILES & DESIGN		133	91.0		195	93.8		185	97.8
Textiles & Design	F	121	91.0	F	183	93.8	F	181	97.8
	M	12	9.0	M	12	6.2	M	4	2.2

Percentage totals for Schools relate to the **female** population
 Note inclusions/exclusions detailed on page 5

POSTGRADUATE TAUGHT COURSE STUDENTS BY SCHOOL/PG/PROGRAMME AND FEE TYPE 2008/09 - 2010/11

On-campus - Scotland

SCHOOL/Programme	2010/11						2009/10						2008/09																		
	UK		EU		OS		UK		EU		OS		UK		EU		OS														
	ft	pt	Tot.	ft	pt	Tot.	ft	pt	Tot.	ft	pt	Tot.	ft	pt	Tot.	ft	pt	Tot.													
UNIVERSITY TOTAL	244	81	325	294	9	303	839	2	841	1469	268	99	367	293	154	447	759	6	765	1579	226	104	330	224	122	346	602	22	624	1300	
BUILT ENVIRONMENT	59	44	103	35	4	39	121	1	122	264	67	70	137	50	5	55	101	4	105	297	75	83	158	46	4	50	79	8	87	295	
Architectural Engineering	6	7	13	5	5	11	11	1	11	29	3	5	8	1	1	6	6	6	15	14	1	6	7	1	1	2	5	5	14		
Built Environment General							1	1	1	1																					
Civil Engineering	12	9	21	14	3	17	20	20	58	20	11	31	13	2	15	23	23	23	69	69	8	16	24	15	2	17	24	1	25	66	
Construction Management & Surveying	15	8	23	6	6	12	46	1	47	76	21	19	40	20	2	22	39	3	42	104	19	22	41	12	1	13	41	5	46	100	
Urban Studies	26	20	46	10	1	11	43	43	100	23	35	58	16	1	17	33	1	34	109	109	47	39	86	18	18	9	2	11	115		
ENGINEERING & PHYSICAL SCIENCES	27	3	30	56	1	57	93	93	180	40	1	41	78	147	225	112	112	112	378	378	45	2	47	59	116	175	84	84	306		
Chemical Engineering	1	1	2	5	5	10	10	10	20	2	2	4	7	7	7	6	6	6	15	15	4	4	8	5	5	5	5	5	14		
Chemistry	4	4	8	4	2	6	6	6	12	6	6	12	1	3	3	3	3	3	10	10	8	8	16	4	4	4	3	3	15		
Electrical, Electronic & Computer Engineering	2	2	4	15	59	76	76	76	152	6	1	7	15	15	70	70	70	70	92	92	1	1	2	4	4	4	48	48	54		
Mechanical Engineering	15	3	18	33	1	34	18	18	70	22	22	52	147	199	22	22	243	243	243	243	24	1	25	38	116	154	16	16	195		
Physics	5	5	10	3	3	6	6	6	12	4	4	8	3	3	11	11	11	11	18	18	8	8	16	8	8	12	12	28			
LIFE SCIENCES	25	5	30	17	17	34	34	34	68	23	5	28	15	15	36	36	36	36	79	79	10	2	12	7	7	7	26	26	45		
Biology	22	4	26	16	16	32	32	32	64	23	5	28	15	15	36	36	36	36	79	79	10	2	12	7	7	7	26	26	45		
Psychology	3	1	4	1	1	2	2	2	4	5	5	10	10	10	10	10	10	10	20	20	10	10	20	10	10	10	10	10	14	14	
MANAGEMENT & LANGUAGES	58	6	64	105	3	108	225	1	226	398	49	5	54	90	2	92	172	172	318	318	41	5	46	71	1	72	190	190	308		
Accountancy & Finance	9	1	10	15	15	30	30	30	60	5	5	10	15	15	22	22	22	22	42	42	5	5	10	14	14	14	34	34	53		
Languages	14	14	28	20	21	41	41	41	82	15	15	30	23	14	14	14	14	14	52	52	13	13	26	28	28	18	18	59			
Management	35	5	40	70	3	73	157	1	158	271	29	5	34	52	2	54	136	136	224	224	23	5	28	29	1	30	138	138	196		
MATHEMATICAL & COMPUTER SCIENCES	23	6	29	30	1	31	153	153	306	33	4	37	36	36	149	149	149	149	223	223	25	3	28	32	32	32	85	85	145		
Actuarial Mathematics & Statistics	10	1	11	13	13	26	26	26	52	16	16	32	18	73	1	74	74	74	108	108	8	8	16	16	16	60	60	84			
Computer Science	8	2	10	12	1	13	63	63	126	7	7	14	13	51	51	51	51	51	71	71	6	1	7	12	12	24	24	43			
Mathematics	5	3	8	5	5	10	10	10	20	10	4	14	5	25	25	25	25	25	44	44	11	2	13	4	4	4	1	1	18		
TEXTILES & DESIGN	6	2	8	4	4	8	8	8	16	7	7	14	4	4	11	11	11	11	22	22	8	8	8	8	8	8	8	8	16		
PETROLEUM ENGINEERING	46	46	92	47	47	94	94	94	188	43	43	86	20	137	1	138	138	138	201	201	19	19	38	9	9	103	103	131			
EDINBURGH BUSINESS SCHOOL	15	15	30	27	27	57	57	57	114	6	14	20	41	41	41	41	41	41	61	61	3	9	12	1	1	27	27	40			

Note inclusions/exclusions detailed on page 5

POSTGRADUATE TAUGHT COURSE FRESHER STUDENTS BY GENDER 2008/09 - 2010/11

On-campus - Scotland

	2010/11			2009/10			2008/09		
	Gen.	Total	%	Gen.	Total	%	Gen.	Total	%
UNIVERSITY TOTAL		1371	33.8		1358	32.3		1079	34.5
BUILT ENVIRONMENT		217	26.7		249	26.9		242	25.6
Architectural Engineering	F	5	20.0	F	3	23.1	F	2	22.2
	M	20	80.0	M	10	76.9	M	7	77.8
Total		25			13			9	
Built Environment General	F	1	100.0						
	M								
Total		1							
Civil Engineering	F	6	12.2	F	9	15.5	F	8	14.3
	M	43	87.8	M	49	84.5	M	48	85.7
Total		49			58			56	
Construction Management & Surveying	F	15	24.6	F	18	20.0	F	19	22.1
	M	46	75.4	M	72	80.0	M	67	77.9
Total		61			90			86	
Urban Studies	F	31	38.3	F	37	42.0	F	33	36.3
	M	50	61.7	M	51	58.0	M	58	63.7
Total		81			88			91	
ENGINEERING & PHYSICAL SCIENCES		160	21.3		278	19.1		204	21.6
Chemical Engineering	F	2	18.2	F	2	13.3	F	3	21.4
	M	9	81.8	M	13	86.7	M	11	78.6
Total		11			15			14	
Chemistry	F	1	16.7	F	4	40.0	F	11	73.3
	M	5	83.3	M	6	60.0	M	4	26.7
Total		6			10			15	
Electrical, Electronic & Computer Engineering	F	13	23.2	F	15	16.9	F	8	14.8
	M	43	76.8	M	74	83.1	M	46	85.2
Total		56			89			54	
Mechanical Engineering	F	11	15.7	F	29	19.9	F	19	20.4
	M	59	84.3	M	117	80.1	M	74	79.6
Total		70			146			93	
Physics	F	7	41.2	F	3	16.7	F	3	10.7
	M	10	58.8	M	15	83.3	M	25	89.3
Total		17			18			28	
LIFE SCIENCES		93	37.6		77	37.7		59	54.2
Biology	F	31	35.2	F	29	37.7	F	21	46.7
	M	57	64.8	M	48	62.3	M	24	53.3
Total		88			77			45	
Psychology	F	4	80.0	F			F	11	78.6
	M	1	20.0	M			M	3	21.4
Total		5						14	
MANAGEMENT & LANGUAGES		393	50.4		289	52.2		258	51.9
Accountancy & Finance	F	26	36.1	F	11	26.2	F	14	26.4
	M	46	63.9	M	31	73.8	M	39	73.6
Total		72			42			53	
Languages	F	44	80.0	F	37	71.2	F	32	66.7
	M	11	20.0	M	15	28.8	M	16	33.3
Total		55			52			48	
Management	F	128	48.1	F	103	52.8	F	88	56.1
	M	138	51.9	M	92	47.2	M	69	43.9
Total		266			195			157	
MATHEMATICAL & COMPUTER SCIENCES		208	33.2		217	30.9		142	40.8
Actuarial Mathematics & Statistics	F	37	37.8	F	38	36.2	F	43	51.2
	M	61	62.2	M	67	63.8	M	41	48.8
Total		98			105			84	
Computer Science	F	22	25.6	F	12	16.9	F	10	23.8
	M	64	74.4	M	59	83.1	M	32	76.2
Total		86			71			42	
Mathematics	F	10	41.7	F	17	41.5	F	5	31.3
	M	14	58.3	M	24	58.5	M	11	68.8
Total		24			41			16	
TEXTILES & DESIGN		28	67.9		22	77.3		15	66.7
Textiles & Design	F	19	67.9	F	17	77.3	F	10	66.7
	M	9	32.1	M	5	22.7	M	5	33.3
PETROLEUM ENGINEERING		239	21.3		200	24.0		131	19.1
Petroleum Engineering	F	51	21.3	F	48	24.0	F	25	19.1
	M	188	78.7	M	152	76.0	M	106	80.9
EDINBURGH BUSINESS SCHOOL		33	33.3		26	23.1		28	25.0
Edinburgh Business School	F	11	33.3	F	6	23.1	F	7	25.0
	M	22	66.7	M	20	76.9	M	21	75.0

Percentage totals for Schools/Institutes relate to the female population
 Note inclusions/exclusions detailed on page 5

POSTGRADUATE RESEARCH STUDENTS BY SCHOOL/PGI/PROGRAMME AND FEE TYPE: 2008/09 - 2010/11

On-campus - Scotland

SCHOOL/Programme	2010/11										2009/10										2008/09									
	UK					EU					OS					UK					EU					OS				
	ft	pt	Tot.	ft	pt	Tot.	ft	pt	Tot.	ft	pt	Tot.	ft	pt	Tot.	Full Tot.	ft	pt	Tot.	ft	pt	Tot.	ft	pt	Tot.	ft	pt	Tot.	Full Tot.	
UNIVERSITY TOTAL	156	21	177	74	8	82	249	14	263	522	135	22	157	80	19	99	218	19	237	483	126	29	155	77	17	94	214	18	232	481
BUILT ENVIRONMENT	18	4	22	4	4	51	5	56	82	15	5	20	5	2	7	36	8	44	71	8	7	15	3	2	5	34	6	40	60	
Civil Engineering	4	2	6	2	2	19	19	27	27	5	2	7	3	3	3	11	2	13	23	2	1	3	3	3	3	11	2	13	19	
Construction Management & Surveying	7	2	9	1	1	21	4	25	35	6	3	9	1	2	3	13	6	19	31	2	5	7	2	2	2	13	4	17	26	
Urban Studies	7	7	14	1	1	11	1	12	20	4	4	4	1	1	12	12	12	17	17	4	1	5	1	5	10	10	10	15	15	
ENGINEERING & PHYSICAL SCIENCES	82	1	83	53	53	65	2	67	203	83	3	86	58	5	63	65	2	67	216	78	5	83	49	4	53	57	2	59	195	
Chemical Engineering	3	3	6	2	2	9	9	14	14	3	3	5	5	5	10	10	10	18	18	4	1	5	7	7	6	6	6	18	18	
Chemistry	18	18	36	6	6	12	6	18	30	24	24	24	5	5	8	8	8	37	37	22	22	22	7	7	7	7	7	36	36	
Electrical, Electronic & Computer Engineering	8	1	9	12	12	17	17	38	38	10	1	11	17	1	18	16	16	45	45	12	12	12	13	2	15	14	14	41	41	
Mechanical Engineering	13	13	26	6	6	12	6	18	30	9	2	11	9	3	12	21	21	44	44	6	3	9	5	2	7	20	20	36	36	
Physics	40	40	80	27	27	54	1	55	82	37	37	37	22	1	23	10	2	12	72	34	1	35	17	17	10	2	12	64	64	
LIFE SCIENCES	17	4	21	2	1	3	21	1	22	46	7	4	11	2	3	5	18	4	22	38	9	2	11	5	4	9	16	4	20	40
Biology	10	3	13	2	2	17	1	18	33	4	2	6	2	2	4	17	4	21	31	6	1	7	5	3	8	16	2	18	33	33
Life Sciences General	1	1	2	1	1	2	1	3	3	2	2	4	1	1	1	1	1	1	5	2	2	3	1	1	1	2	2	6	6	
Psychology	4	1	5	1	1	3	3	9	9	1	2	3	3	1	1	1	1	1	5	2	2	3	1	1	1	2	2	6	6	
Sport & Exercise Science	2	2	4	2	2	4	2	6	6	2	2	2	2	2	2	2	2	2	6	1	1	1	1	1	1	1	1	2	2	
MANAGEMENT & LANGUAGES	4	5	9	6	3	9	19	1	20	38	5	4	9	4	4	8	14	1	15	32	7	6	13	6	2	8	13	2	15	36
Accountancy & Finance	1	1	2	2	2	4	4	8	8	2	2	2	2	2	2	3	3	3	5	1	1	2	2	2	2	2	2	5	5	
Economics	2	2	4	1	1	5	5	8	8	1	1	2	2	2	2	2	2	2	5	2	2	2	2	2	2	2	1	3	7	
Languages	2	2	4	1	1	3	4	4	9	2	3	5	1	1	6	6	6	12	12	1	4	5	1	1	2	5	5	12	12	
Management	1	2	3	1	2	3	6	1	7	13	2	1	3	3	3	3	3	4	10	3	3	2	5	1	1	2	4	1	5	12
MATHEMATICAL & COMPUTER SCIENCES	28	5	33	4	3	7	30	1	31	71	20	2	22	4	5	9	29	1	30	61	16	6	22	7	4	11	38	2	40	73
Actuarial Mathematics & Statistics	2	1	3	3	3	6	5	5	8	1	1	1	1	1	1	1	1	1	9	10	2	1	3	3	3	9	9	12	12	
Computer Science	11	3	14	3	3	6	15	1	16	36	11	2	13	2	5	7	13	1	14	34	9	5	14	4	4	8	23	2	25	47
Mathematics	15	1	16	1	1	10	10	27	27	8	8	8	2	2	7	7	7	17	17	5	5	5	3	3	6	6	6	14	14	
TEXTILES & DESIGN	3	1	4	1	1	11	11	16	16	1	1	2	1	1	1	13	13	13	16	5	1	6	1	1	1	1	10	10	17	17
PETROLEUM ENGINEERING	4	1	5	4	1	5	52	4	56	66	4	3	7	6	6	43	3	46	59	3	2	5	7	7	7	46	2	48	60	

Note inclusions/exclusions detailed on page 5

POSTGRADUATE RESEARCH FRESHER STUDENTS BY GENDER: 2008/09 - 2010/11

On-campus - Scotland

	2010/11			2009/10			2008/09		
	Gend.	Total	%	Gend.	Total	%	Gend.	Total	%
UNIVERSITY TOTAL		146	34.9		84	28.6		95	31.6
BUILT ENVIRONMENT		22	31.8		15	53.3		14	35.7
Architectural Engineering	F	1	100.0	F			F		
	M			M			M		
Total		1							
Civil Engineering	F	3	33.3	F	3	75.0	F	3	60.0
	M	6	66.7	M	1	25.0	M	2	40.0
Total		9			4			5	
Construction Management & Surveying	F	1	14.3	F	2	40.0	F	1	33.3
	M	6	85.7	M	3	60.0	M	2	66.7
Total		7			5			3	
Urban Studies	F	3	60.0	F	3	50.0	F	1	16.7
	M	2	40.0	M	3	50.0	M	5	83.3
Total		5			6			6	
ENGINEERING & PHYSICAL SCIENCES		42	28.6		39	15.4		40	30.0
Chemical Engineering	F	2	66.7	F			F	2	66.7
	M	1	33.3	M			M	1	33.3
Total		3						3	
Chemistry	F	4	57.1	F	2	25.0	F	3	27.3
	M	3	42.9	M	6	75.0	M	8	72.7
Total		7			8			11	
Electrical, Electronic & Computer Engineering	F			F	1	14.3	F	1	20.0
	M	6	100.0	M	6	85.7	M	4	80.0
Total		6			7			5	
Mechanical Engineering	F	2	33.3	F	2	25.0	F	2	25.0
	M	4	66.7	M	6	75.0	M	6	75.0
Total		6			8			8	
Physics	F	4	20.0	F	1	6.3	F	4	30.8
	M	16	80.0	M	15	93.8	M	9	69.2
Total		20			16			13	
LIFE SCIENCES		19	63.2		7	42.9		9	66.7
Biology	F	8	66.7	F	2	40.0	F	5	62.5
	M	4	33.3	M	3	60.0	M	3	37.5
Total		12			5			8	
Life Sciences	F	1	50.0	F			F		
	M	1	50.0	M			M		
Total		2							
Psychology	F	3	75.0	F	1	50.0	F	1	100.0
	M	1	25.0	M	1	50.0	M		
Total		4			2			1	
Sport & Exercise Science	F			F			F		
	M	1	100.0	M			M		
Total		1							
MANAGEMENT & LANGUAGES		16	43.8		6	33.3		7	42.9
Accountancy & Finance	F	1	33.3	F	1	100.0	F	1	50.0
	M	2	66.7	M			M	1	50.0
Total		3			1			2	
Economics	F	2	50.0	F			F	1	33.3
	M	2	50.0	M			M	2	66.7
Total		4						3	
Languages	F	3	60.0	F			F	1	50.0
	M	2	40.0	M	1	100.0	M	1	50.0
Total		5			1			2	
Management	F	1	25.0	F	1	25.0	F		
	M	3	75.0	M	3	75.0	M		
Total		4			4				
MATHEMATICAL & COMPUTER SCIENCES		28	28.6		11	36.4		16	12.5
Actuarial Mathematics & Statistics	F			F			F		
	M	1	100.0	M			M	4	100.0
Total		1						4	
Computer Science	F	4	28.6	F	1	20.0	F	2	22.2
	M	10	71.4	M	4	80.0	M	7	77.8
Total		14			5			9	
Mathematics	F	4	30.8	F	3	50.0	F		
	M	9	69.2	M	3	50.0	M	3	100.0
Total		13			6			3	
TEXTILES & DESIGN		4	75.0		1			1	100.0
Textiles & Design	F	3	75.0	F			F	1	100.0
	M	1	25.0	M	1	100.0	M		
PETROLEUM ENGINEERING		15	6.7		5	20.0		8	12.5
Petroleum Engineering	F	1	6.7	F	1	20.0	F	1	12.5
	M	14	93.3	M	4	80.0	M	7	87.5

Percentage totals for Schools/Institutes relate to the female population
Note inclusions/exclusions detailed on page 5

UNDERGRADUATE INCOMING EXCHANGE, NON-GRADUATING AND VISITING STUDENTS: 2008/09 - 2010/11

SCHOOL/Programme	2010/11					2009/10					2008/09									
	EU/UK			OS		Full Tot.	EU/UK			OS		Full Tot.	EU/UK			OS		Full Tot.		
	ft	pt	Tot.	ft	pt		Tot.	ft	pt	Tot.	ft		pt	Tot.	ft	pt	Tot.			
UNIVERSITY TOTAL	124	1	125	16	1	17	142	129	3	132	16	1	17	149	104	8	112	15	15	127
BUILT ENVIRONMENT	10		10	5		5	15	9		9			9	4		4	6		6	10
ENGINEERING & PHYSICAL SCI	20		20				20	2	22				22	23	4	27			0	27
MANAGEMENT & LANGUAGES	90	1	90	7	1	8	98	97	1	98	13	1	14	112	76	4	80	9	9	89
MATHEMATICAL & COMP SCI	2		2	2		2	4	2	2	3		3	5	1	1	2	2		2	4
TEXTILES & DESIGN	2		2	2		2	4	1	1				1	4	4	2	2		2	6

The above numbers are excluded from student numbers reported on previous pages

The EU/UK numbers included the following number of UK students: 2010/11, 1; 2009/10, 3; 2008/09, 1

APPROVED LEARNING PARTNERS: AT JANUARY 2011

COUNTRY	No	COUNTRY	No
Bahrain	1	Mauritius	1
Bangladesh	1	Norway	1
China	1	Russia	1
Costa Rica	1	Saudi Arabia	1
Cyprus	1	Singapore	3
Denmark	1	South Africa	1
Egypt	2	St Kitts and Nevis	1
Greece	3	Sweden	1
Hong Kong	4	Switzerland	1
Indonesia	1	Trinidad & Tobago	3
Ireland	1	Uganda	1
Israel	1	Ukraine	1
Jamaica	1	United Kingdom	3
Jordan	1	USA	1
Kazakhstan	1	Yugoslavia	1
Malaysia	3	Zambia	1
	Total		46

UNDERGRADUATE FRESHERS: DOMICILES 2010/11 (ranked by population size)

On-campus - Scotland

Academic year of entry	Year 1	Year 2	Year 3	Year 4	Year 5	Total: All Years	2009/10 Total	2008/09 Total	2007/08 Total
UNIVERSITY TOTAL	1159	163	165	17	16	1520	2210	1913	1826
UK	940	87	57	3		1087	1546	1323	1277
Scotland	744	74	54	3		875	1229	1052	996
Rest of UK	196	13	3			212	317	271	281
EU	92	24	82	9	16	223	460	397	419
France	6	2	54	3		65	293	252	243
Germany	13	16	14		16	59	43	46	54
Ireland	7	3	11	1		22	22	26	37
Greece	10		3			13	29	27	27
Latvia	7	2				9		3	2
Lithuania	7	1				8	3	4	1
Bulgaria	7					7	6	2	1
Cyprus	2			5		7	4	5	2
Italy	6					6	6	3	6
Poland	5					5	12	15	21
Sweden	5					5	10	2	2
Finland	5					5	6	3	2
Spain	5					5	6	3	4
Other EU	7					7			
Overseas non-EU	127	52	26	5		210	204	193	130
China	24	4	14	3		45	38	51	31
Saudi Arabia	32	8	3			43	45	36	10
Norway	21	1				22	23	24	14
Malaysia	5	10	1			16	21	16	19
India	3	6	1			10	3	6	7
Kazakhstan	8	1				9	6	4	3
UAE	6					6	3	2	2
Libya	6					6	9	9	1
Iran		1	4			5	2		
Not known	1	4				5			
Other Overseas non-EU	21	17	3	2		43			

POSTGRADUATE TAUGHT COURSE FRESHER STUDENTS: DOMICILES 2007/08 - 2010/11
(ranked by population size)

Academic year of entry	Year 1	Year 2	Year 3	2010/11 Total	2009/10 Total	2008/09 Total	2007/08 Total
UNIVERSITY TOTAL	1369	1	1	1371	1344	1037	1003
UK	384			384	339	323	277
Scotland	197			197	249	254	202
Rest of UK	187			187	90	69	75
EU	263		1	264	326	214	230
Spain	75			75	24	11	18
Greece	56			56	103	80	99
Germany	51		1	52	45	22	20
France	34			34	40	37	30
Italy	7			7	8	3	3
Cyprus	6			6	6	6	3
Lithuania	6			6			
Romania	5			5	4	2	1
Other EU	23						
Overseas non-EU	722	1		723	679	500	496
China	175			175	129	82	100
India	91			91	99	70	94
Nigeria	86			86	83	66	66
Saudi Arabia	73			73	82	33	21
Thailand	44			44	13	16	8
Libya	25			25	57	23	8
Kazakhstan	24			24	19	11	5
U.S.A.	19			19	9	10	6
Pakistan	17			17	12	20	22
Norway	12			12	9	4	6
Oman	12			12	6	13	10
Canada	12			12	5	5	16
Taiwan	10			10	6	8	9
Iran	9			9	8	9	7
UAE	10			10	2	3	2
Mexico	8			8	7	15	6
Syria	8			8	9	4	
Malaysia	7			7	19	16	10
Russia	6			6	5	2	4
Turkey	5			5	3		3
Vietnam (North)	5			5	3	1	
Other Overseas non-EU	64	1		65			

Figures for 2007 to 2010 exclude a small number of Edinburgh Business School fresher students.

POSTGRADUATE RESEARCH FRESHER STUDENT: DOMICILES 2007/08 - 2010/11
(ranked by population size)

Academic year of entry	Year 1	Year 2	Year 3	2010/11 Total	2009/10 Total	2008/09 Total	2007/08 Total
Univ Total	164	3		146	84	95	61
UK	70	3		73	40	36	32
Scotland	31	2		33	29	30	20
Rest of UK	39	1		40	11	6	12
EU	12			12	14	18	6
Finland	2			2			
France	2			2	3	3	2
Italy	2			2	2		1
Spain	2			2		2	
Germany	1			1	4	5	1
Greece	1			1	2	1	2
Netherlands	1			1			
Poland	1			1			
Cyprus					1	1	
Ireland					1	1	
Austria						1	
Belgium						1	
Denmark						2	
Poland						1	
Portugal					1		
Overseas non-EU	61			40	15	14	18
Saudi Arabia	11			11	5		
China	7			7	4	6	6
Nigeria	6			6	1	1	
Syria	6			6	4	3	8
India	5			5	1	2	4
Iran	5			5		2	
Other Overseas non-EU	21			21	15	27	5

NON-UK DOMICILED STUDENTS (UG, PGT, PGR) BY COUNTRY: 2005/06 - 2010/11
On-campus - Scotland

CONTINENT/COUNTRY	2010/11	%	2009/10	%	2008/09	%	2007/08	%	2006/07	%	2005/06	%
UNIVERSITY TOTAL	2,476	100	2,697	100	2,302	100	2,085	100	1,900	100	1,765	100
CHINA REPUBLIC	343	19.4	279	10.3	229	9.9	229	11.0	279	14.7	334	18.9
FRANCE *	178	10.1	412	15.3	353	15.3	334	16.0	310	16.3	234	13.3
SAUDI ARABIA	166	9.4	127	4.7	62	2.7	39	1.9	25	1.3	35	2.0
GERMANY	160	9.1	140	5.2	127	5.5	131	6.3	120	6.3	80	4.5
GREECE	141	8.0	294	10.9	262	11.4	173	8.3	111	5.8	121	6.9
INDIA	131	7.4	155	5.7	113	4.9	129	6.2	111	5.8	108	6.1
IRISH REPUBLIC	112	6.3	153	5.7	129	5.6	147	7.1	120	6.3	110	6.2
NIGERIA	109	6.2	106	3.9	94	4.1	92	4.4	77	4.1	51	2.9
SPAIN	95	5.4	40	1.5	31	1.3	42	2.0	36	1.9	43	2.4
NORWAY	78	4.4	61	2.3	54	2.3	49	2.4	42	2.2	50	2.8
MALAYSIA	73	4.1	90	3.3	79	3.4	65	3.1	64	3.4	66	3.7
LIBYAN ARAB REPUBLIC	58	3.3	79	2.9	39	1.7	18	0.9	29	1.5	15	0.8
THAILAND	52	2.9	20	0.7	23	1.0	12	0.6	10	0.5	4	0.2
POLAND	50	2.8	71	2.6	67	2.9	64	3.1	48	2.5	29	1.6
KAZAKHSTAN	42	2.4	29	1.1	16	0.7	13	0.6	6	0.3	3	0.2
IRAN ISLAMIC REP	38	2.2	34	1.3	36	1.6	17	0.8	23	1.2	11	0.6
UNITED ARAB EMIRATES	37	2.1	21	0.8	15	0.7	10	0.5	8	0.4	7	0.4
ITALY	33	1.9	32	1.2	26	1.1	27	1.3	24	1.3	11	0.6
PAKISTAN	33	1.9	25	0.9	34	1.5	33	1.6	42	2.2	45	2.5
U.S.A.	31	1.8	28	1.0	29	1.3	23	1.1	24	1.3	28	1.6
SYRIAN ARAB REPUBLIC	30	1.7	32	1.2	26	1.1	39	1.9	34	1.8	21	1.2
OMAN	24	1.4	16	0.6	20	0.9	17	0.8	14	0.7	14	0.8
CYPRUS	23	1.3	17	0.6	19	0.8	12	0.6	12	0.6	10	0.6
LITHUANIA	22	1.2	9	0.3	6	0.3	3	0.1	3	0.2	2	0.1
SWEDEN	21	1.2	24	0.9	15	0.7	14	0.7	15	0.8	8	0.5
FINLAND	19	1.1	11	0.4	6	0.3	4	0.2	2	0.1	3	0.2
CANADA	16	0.9	8	0.3	9	0.4	18	0.9	6	0.3	12	0.7
MEXICO	16	0.9	14	0.5	23	1.0	11	0.5	12	0.6	7	0.4
HONG KONG	15	0.8	15	0.6	12	0.5	9	0.4	8	0.4	15	0.8
RUSSIA	14	0.8	17	0.6	13	0.6	12	0.6	7	0.4	3	0.2
LATVIA	13	0.7	9	0.3	8	0.3	4	0.2	4	0.2	1	0.1
TAIWAN	13	0.7	8	0.3	11	0.5	16	0.8	20	1.1	23	1.3
BELGIUM	12	0.7	14	0.5	13	0.6	13	0.6	8	0.4	8	0.5
BULGARIA	12	0.7	12	0.4	5	0.2	5	0.2	4	0.2	2	0.1
VIETNAM - NORTH	11	0.6	5	0.2	0	0.0	0	0.0	2	0.1	2	0.1
NETHERLANDS	10	0.6	6	0.2	8	0.3	7	0.3	6	0.3	10	0.6
SWITZERLAND	10	0.6	11	0.4	5	0.2	2	0.1	2	0.1	3	0.2
COUNTRY NOT KNOWN	6	0.3	1	0.0	1	0.0	1	0.0	2	0.1	1	0.1
OTHER ASIA	77											
OTHER EUROPE	69											
OTHER AFRICA	55											
OTHER AMERICAS	27											
OTHER AUSTRALIA	1											

Percentages are expressed as a proportion of the non-UK total

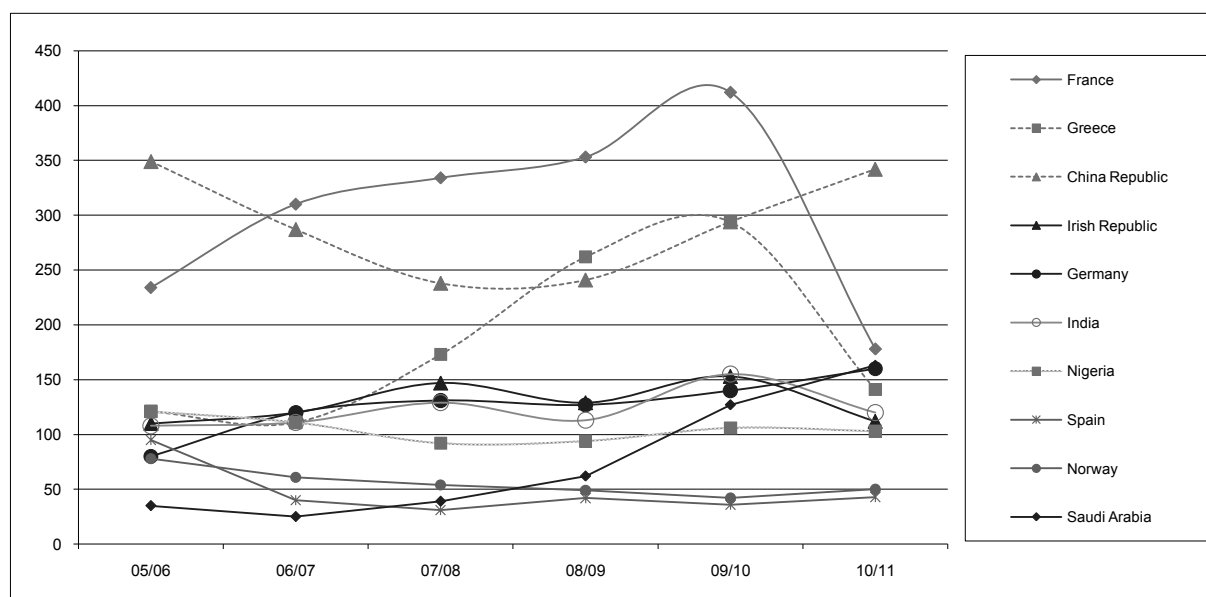
Top 10 domiciles by population size are highlighted in each year prior to 2010/11

UK dependent countries are not included

*Including any French dependencies.

Inclusions/exclusions detailed on page 5 apply. Note that total non-UK numbers in this report will not match exactly those indicated on page 5 which assigns students to 'other EU' and 'overseas' categories on the basis of the "fees status" assigned to the student.

Top 10 domiciles by population size (on-campus students studying in Scotland): trends 2005/06 - 2010/11



	ALP	SBE	EPS	MACS	SML	IFE	EBS	Total
University Total		2330	215	88	1836	111	5857	10437
Bahrain	Bahrain Training Institute	77						77
Bangladesh	Bangladesh Institute of Management Studies				32			32
China	Shanghai University of Finance and Economics				18			18
Cyprus	Frederick Institute of Technology			1				1
	The Phillips College	9						9
Cyprus Total		9		1				10
Denmark	Fokus Limited						5	5
Egypt	Ain Shams University (Commerce)						22	22
	The American University in Cairo						590	590
Egypt Total							612	612
Greece	Centre Euro Mgt Studies (CEMS)	56			23		17	96
	iCon Training International Ld	1			30			31
	Technical Educational Institute of Athens		29					29
	Technical Educational Institute of Piraeus		186		36			222
Greece Total		57	215		89		17	378
Hong Kong	Hong Kong - Continuous Professional Education	537						537
	Hong Kong College of Engineering	135						135
	The Hong Kong Polytechnic University				554			554
	SPEED				11			11
	Hong Kong Cyber University						157	157
Hong Kong Total		672			565		157	1394
Indonesia	University Indonusa Esa Unggul				11			11
Iran	ICTEC (Tehran)			87				87
Ireland	HSI Limerick Business School						27	27
Israel	Ramat-Gan College						426	426
Jamaica	B&B University College Ltd				110		32	142
Kazakhstan	Kazakh-British Technical University	1				16		17
Malaysia	Imperia Institute of Technology	455						455
	Institute of Technology Petronas SDN.BHD					10		10
	Institute of Training and Development - Johor Bahru				1			1
	Institute of Training and Development - Kuala Lumpur				18			18
	Institute of Training and Development - Penang				8			8
Malaysia Total		455			27	10		492
Malta	The Malta Institute of Management						43	43
Mauritius	Glamis Business School				28		59	87
Norway	Oslo School of Management						35	35
Qatar	Economic Group Training and Consulting						18	18
Russia	Tomsk Polytechnic University					85		85
Serbia	English School of Business						47	47
Singapore	Trent Global College of Technology and Management	902						902
	Uptrend Education Pte Ltd				53			53
	East Asia School Business Institute Management						106	106
Singapore Total		902			53		106	1061
Sweden	Executive Management Institute						48	48
Switzerland	FHBB International Business Management						99	99
Trinidad & Tobago	School of Higher Education Ltd (San Fernando)	111			266			377
	School of Higher Education Ltd (San Juan)				91			91
	School of Higher Education Ltd	34						34
	School of Business & Computer Science (T&T)						1062	1062
Trinidad & Tobago Total		145			357		1062	1564
UK	Ayr College				39			39
	West London College				507			507
	Adam Smith College	12						12
	The City College							
	Finance and Business Training Ltd							
UK Total		12			546		2630	3188
USA	Schlumberger/ NExT						66	66
Uganda	Management and Accounting Training Company Ltd						229	229
Ukraine	Institute of Management Executives						3	3
Zambia	Zambian Institute (ZICAB)						136	136

APPLICATIONS AND ADMISSIONS

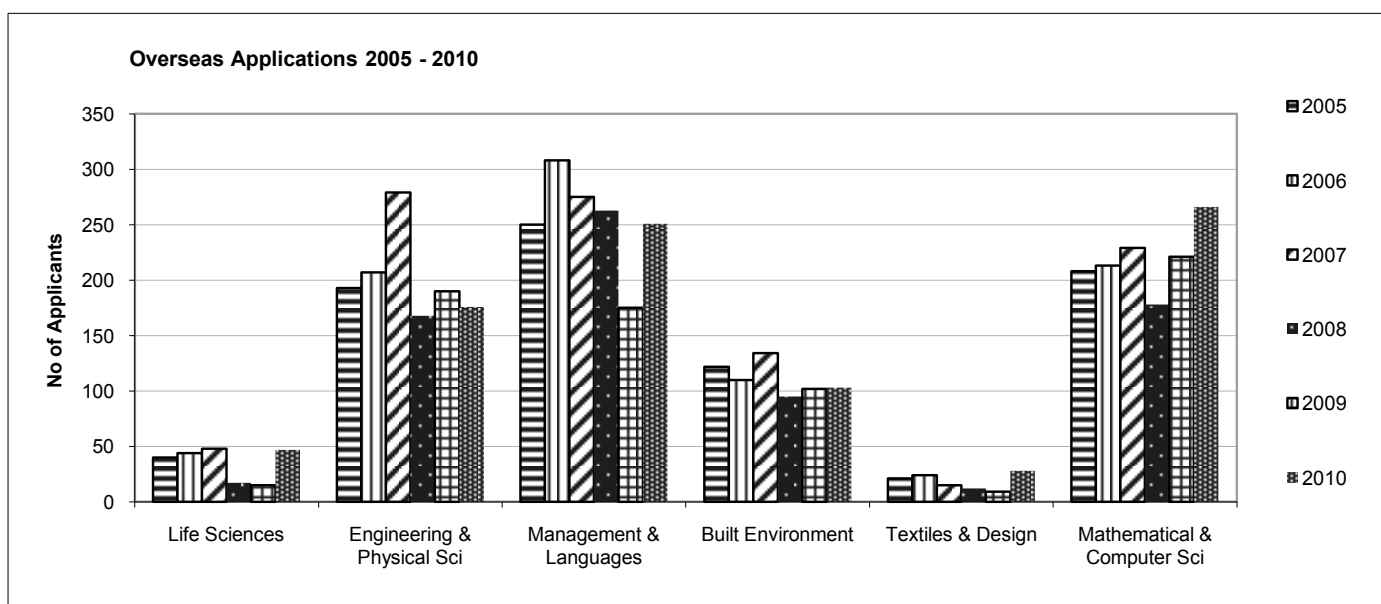
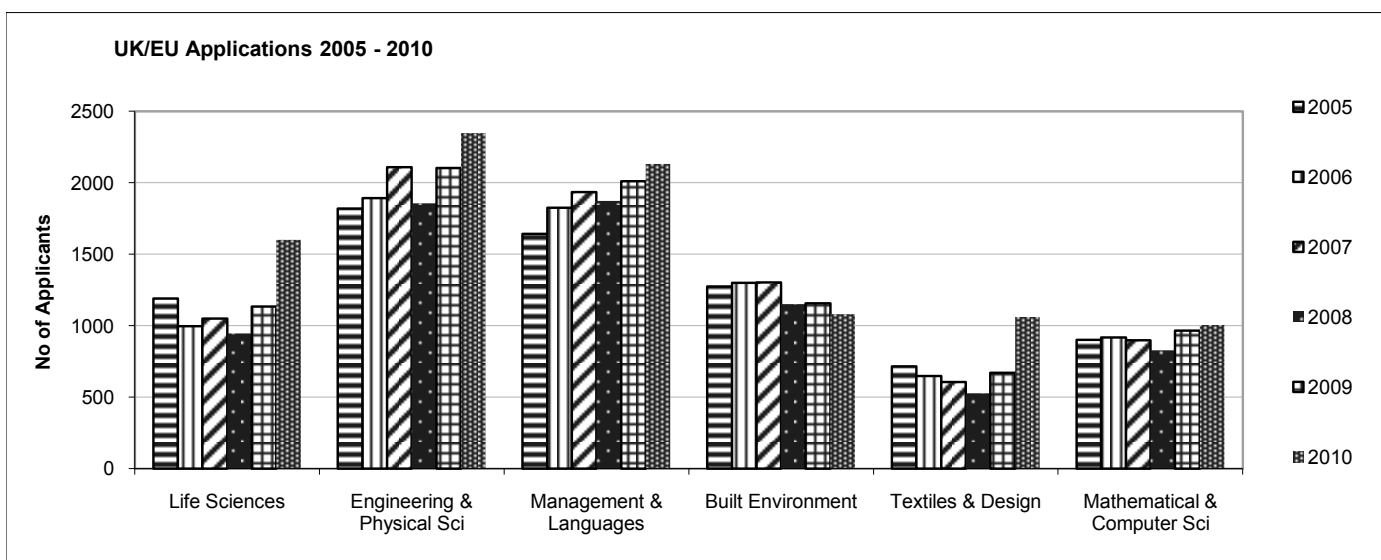
UNDERGRADUATE APPLICATIONS (UCAS): 2006 – 2010

Full application statistics are presented in following pages.

	2010 Entry	2009 Entry	2008 Entry	2007 Entry	2006 Entry
Edinburgh Campus	8562	7759	7095	7990	7570
Scottish Borders Campus	1535	996	823	888	916
TOTAL	10097	8755	7918	8878	8486

UNDERGRADUATE ENTRANTS: 2006 – 2010

	2010 Entry	2009 Entry	2008 Entry	2007 Entry	2006 Entry
Edinburgh Campus	1293	1929	1630	1560	1502
Scottish Borders Campus	181	257	244	222	206
TOTAL	1474	2186	1874	1782	1708



UNDERGRADUATE UCAS APPLICATION STATISTICS 2006 - 2010

UK/EU Applicants (Residential Status on UCAS form)

SCHOOL/Programme	2010 Entry Apps at 10/10/2010	% change 10/09	2009 Entry Apps at 10/10/2009	% change 09/08	2008 Entry Apps at 10/10/2008	% change 08/07	2007 Entry Apps at 10/10/2007	% change 07/06	2006 Entry Apps at 02/10/2006
UNIVERSITY TOTAL	9226	15	8043	11	7265	-8	7938	4	7649
BUILT ENVIRONMENT	1081	-6	1156	0	1152	-12	1303	0	1301
Architectural Engineering	147	21	121	22	99	100			
Civil Engineering	524	-2	535	11	480	-9	528	1	523
Construction Management & Surveying	294	-10	325	-1	329	-35	510	-9	558
Urban Studies	116	-34	175	-28	244	-8	265	20	220
ENGINEERING & PHYSICAL SCIENCES	2347	12	2104	13	1856	-12	2108	11	1894
Chemical Engineering	355	-2	363	26	288	-2	294	27	232
Chemistry	418	-8	453	19	380	-25	507	9	465
Combined Studies (BSc)	41	-45	74	12	66	-19	81	80	45
Electrical, Electronic & Computer Engineering	320	53	209	-3	215	-12	245	0	244
Mechanical Engineering	712	18	603	8	558	-12	631	11	567
Physics	415	28	324	24	262	-7	283	3	274
BEng Engineering	86	10	78	-10	87	30	67	0	67
LIFE SCIENCES	1600	41	1135	20	947	-10	1049	5	997
Biology	551	12	490	27	386	-18	468	11	421
Sport & Exercise Science	403	20	336	-8	364	5	346	-4	360
Psychology	646	109	309	57	197	-16	235	9	216
MANAGEMENT & LANGUAGES	2132	6	2012	7	1874	-3	1934	6	1824
Accountancy & Finance	537	-9	592	12	528	7	494	-2	505
Combined Studies (BA)								-100	11
Economics	212	5	202	-10	224	-9	245	22	201
Languages	391	2	383	9	351	-16	416	-3	431
Management	619	10	561	5	536	-7	578	16	499
Management (Scottish Borders Campus)	373	36	274	17	235	17	201	14	177
MATHEMATICAL & COMPUTER SCIENCES	1006	4	965	16	829	-8	897	-2	917
Actuarial Mathematics & Statistics	244	-4	255	8	237	13	210	-19	259
Computer Science	414	17	353	27	279	-20	347	5	332
Mathematics	348	-3	357	14	313	-8	340	4	326
TEXTILES AND DESIGN	1060	58	671	11	607	-6	647	-10	716

Overseas Applicants (Residential Status on UCAS form)

SCHOOL/Programme	2010 Entry Appls at 10/10/2009	% change 09/08	2009 Entry Appls at 10/10/2008	% change 09/08	2008 Entry Appls at 10/10/2008	% change 08/07	2007 Entry Appls at 10/10/2007	% change 07/06	2006 Entry Appls at 02/10/2006
UNIVERSITY TOTAL	871	22	712	-3	733	-25	980	8	906
BUILT ENVIRONMENT	103	1	102	7	95	-29	134	22	110
Architectural Engineering	18	6	17	42	12	100			
Civil Engineering	33	-6	35	17	30	-39	49	-8	53
Construction Management & Surveying	28	-13	32	-9	35	-47	66	61	41
Urban Studies	24	33	18	0	18	-5	19	19	16
ENGINEERING & PHYSICAL SCIENCES	176	-7	190	13	168	-40	279	35	207
Chemical Engineering	59	-11	66	57	42	-37	67	56	43
Chemistry	11	120	5	-38	8	-69	26	37	19
Combined Studies (BSc)	6			-100	1	-80	5	-17	6
Electrical, Electronic & Computer Engineering	38	-14	44	-27	60	-22	77	13	68
Mechanical Engineering	48	-21	61	36	45	-46	83	30	64
Physics	6	-40	10	0	10	-44	18	260	5
BEng Engineering	8	100	4	100	2	-33	3	50	2
LIFE SCIENCES	47	213	15	-12	17	-65	48	9	44
Biology	27	125	12	-25	16	-56	36	38	26
Sport & Exercise Science	4	100	2	100	1	-86	7	17	6
Psychology	16		1			-100	5	-58	12
MANAGEMENT & LANGUAGES	251	43	175	-33	263	-4	275	-11	308
Accountancy & Finance	68	39	49	-52	102	32	77	-7	83
Economics	31	11	28	-7	30	-43	53	-7	57
Languages	8	0	8	-20	10	67	6	-63	16
Management	70	46	48	-33	72	-3	74	-12	84
Management (Scottish Borders Campus)	74	76	42	-14	49	-25	65	-4	68
MATHEMATICAL & COMPUTER SCIENCES	266	20	221	24	178	-22	229	8	213
Actuarial Mathematics & Statistics	175	14	153	26	121	-7	130	25	104
Computer Science	40	29	31	-26	42	-16	50	-32	73
Mathematics	51	38	37	147	15	-69	49	36	36
TEXTILES AND DESIGN	28	211	9	-25	12	-20	15	-38	24

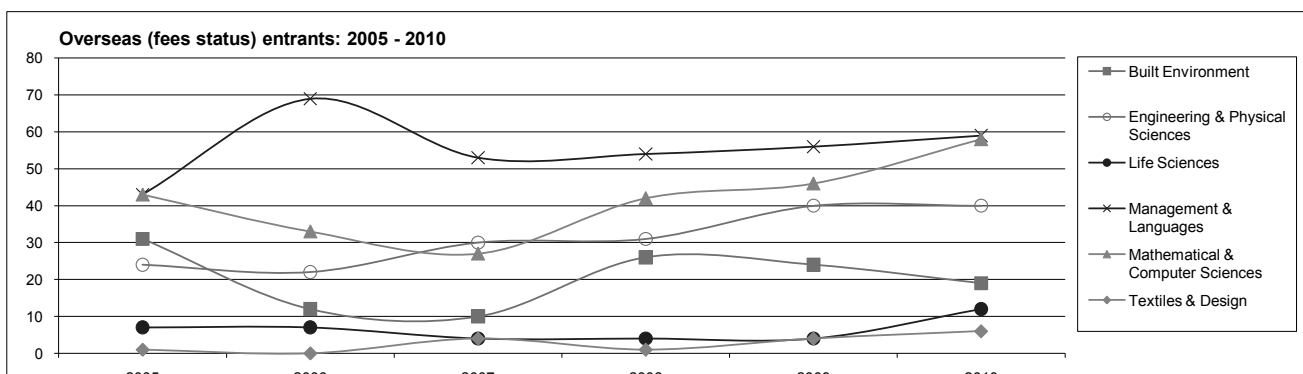
UNDERGRADUATE ADMISSIONS 2006 - 2010 ENTRY

UK/EU (fees status)

SCHOOL/Programme	2010 ENTRANTS	% change 10/09	2009 ENTRANTS	% change 09/08	2008 ENTRANTS	% change 08/07	2007 ENTRANTS	% change 07/06	2006 ENTRANTS
UNIVERSITY TOTAL	1286	-36	2012	17	1716	6	1613	0	1612
BUILT ENVIRONMENT	151	-41	256	25	205	-3	212	7	199
Architectural Engineering	21	-9	23	64	14	100			
Civil Engineering	53	-56	121	36	89	11	80	-14	93
Construction Management & Surveying	46	-42	79	30	61	-23	79	13	70
Urban Planning	31	-6	33	-20	41	-23	53	47	36
ENGINEERING & PHYSICAL SCIENCES	357	-37	564	13	498	4	479	2	469
Chemical Engineering	66	-14	77	22	63	29	49	26	39
Chemistry	61	-51	125	25	100	-6	106	-6	113
Combined Studies (BSc)	2	-95	37	3	36	44	25	79	14
Electrical, Electronic & Computer Engineering	53	-18	65	16	56	-23	73	6	69
Mechanical Engineering	93	-40	156	6	147	17	126	-10	140
Physics	68	-17	82	8	76	-14	88	10	80
BEng Engineering	14	-36	22	10	20	67	12	-14	14
LIFE SCIENCES	155	-44	277	41	197	4	189	15	164
Biology	66	-51	135	35	100	-4	104	21	86
Sport & Exercise Science	29	-56	66	8	61	39	44	16	38
Psychology	60	-21	76	111	36	-12	41	3	40
MANAGEMENT & LANGUAGES	292	-35	449	9	411	-4	426	8	396
Accountancy & Finance	67	-51	136	27	107	9	98	5	93
Economics	33	-38	53	6	50	2	49	7	46
Languages	91	-17	109	25	87	-19	107	29	83
Management	61	-41	103	-3	106	-13	122	17	104
Management (Scottish Borders Campus)	40	-17	48	-21	61	22	50	-29	70
MATHEMATICAL & COMPUTER SCIENCES	198	-25	265	18	225	21	186	-13	215
Actuarial Mathematics & Statistics	62	-13	71		71	73	41	-45	74
Computer Science	75	-26	102	29	79	-2	81	-6	86
Mathematics	61	-34	92	23	75	17	64	16	55
TEXTILES & DESIGN	133	-34	201	12	180	49	121	-28	169

Overseas (fees status)

SCHOOL/Programme	2010 ENTRANTS	% change 10/09	2009 ENTRANTS	% change 09/08	2008 ENTRANTS	% change 08/07	2007 ENTRANTS	% change 07/06	2006 ENTRANTS
UNIVERSITY TOTAL	194	11	174	10	158	26	125	-14	146
BUILT ENVIRONMENT	19	-21	24	-8	26	160	10	-17	12
Architectural Engineering	6	100	4	100	2	100			
Civil Engineering	7	-22	9	200	3	200	1		1
Construction Management & Surveying	3		7	17	7	17	6	-25	8
Urban Planning	3	-25	4	-71	14	367	3		3
ENGINEERING & PHYSICAL SCIENCES	40		40	29	31	3	30	36	22
Chemical Engineering	11	-15	13	160	5	-50	10	400	2
Chemistry	2	100		-100	4	300	1	-50	2
Combined Studies (BSc)			1					-100	1
Electrical, Electronic & Computer Engineering	15	25	12	33	9	29	7	-22	9
Mechanical Engineering	11		11	-8	12	9	11	38	8
Physics	1	-50	2	100	1		1		
BEng Engineering			1						
LIFE SCIENCES	12	200	4		4		4	-43	7
Biology	10	150	4	33	3	-25	4	-20	5
Psychology	2				1			-100	2
MANAGEMENT & LANGUAGES	59	5	56	4	54	2	53	-23	69
Accountancy & Finance	25	14	22	-4	23	-12	26		26
Economics	8	-43	14	100	7	-13	8	-20	10
Languages	2		2	-50	4				
Management	22	57	14	-22	18	38	13	-35	20
Management (Scottish Borders Campus)	2	-50	4	100	2	-67	6	-54	13
MATHEMATICAL & COMPUTER SCIENCES	58	26	46	10	42	56	27	-18	33
Actuarial Mathematics & Statistics	36	24	29		29	45	20		20
Computer Science	11	57	7	-22	9	800	1	-89	9
Mathematics	11	10	10	150	4	-33	6	50	4
TEXTILES & DESIGN	6	50	4	300	1		1	-67	3



PREVIOUS INSTITUTIONS OF FRESHERS: 2010 ENTRY (HOME FEE STATUS)

SCHOOL NAME	Town/City	Area	2010 No	2009 No	2008 No	2007 No
EDINBURGH TELFORD COLLEGE	Edinburgh	Edinburgh	36	57	39	37
STEVENSON COLLEGE	Edinburgh	Edinburgh	33	63	43	27
JEWEL & ESK VALLEY COLLEGE	Dalkeith	Midlothian	27	20	18	15
GLASGOW METROPOLITAN COLLEGE	Glasgow	Glasgow	21			
FORTH VALLEY COLLEGE OF FE	Falkirk	Stirlingshire	17	25	14	13
ADAM SMITH COLLEGE	Kirkcaldy	Fife	15	24	10	19
BOROUGHMUIR HIGH SCHOOL	Edinburgh	Edinburgh	15	11	11	12
CARDONALD COLLEGE	Glasgow	Glasgow	14	23	25	20
CURRIE HIGH SCHOOL	Currie	Edinburgh	13	21	12	10
ST MARGARET'S ACADEMY	Livingston	West Lothian	12	16	16	10
BANCHORY ACADEMY	Banchory	Aberdeenshire	11	14		
CRAIGMOUNT HIGH SCHOOL	Edinburgh	Edinburgh	10	21	11	10
BALWEARIE HIGH SCHOOL	Kirkcaldy	Fife	9	19	14	14
JAMES YOUNG HIGH SCHOOL	Livingston	West Lothian	9			
MUSSELBURGH GRAMMAR	Musselburgh	East Lothian	9			
WESTHILL ACADEMY	Aberdeen	Aberdeen	9			

The above table shows the top 16 previous institutions by size of HWU entry population in 2010. Within the remaining institutions, 31 had populations of 5 to 8 and a further 121 institutions had populations of 2 to 4.

**QUALIFICATIONS HELD BY FULL-TIME UNDERGRADUATE NEW ENTRANTS: 2006 - 2010 ENTRY
Highers and A/AS Level Holders**

SCHOOL/Programme	* TOTAL UCAS POINTS									
	2010 Entry		2009 Entry		2008 Entry		2007 Entry		2006 Entry	
	Nos	Tariff	Nos	Tariff	Nos	Tariff	Nos	Tariff	Nos	Tariff
UNIVERSITY TOTAL	956	417	1275	347	839	333	773	331	885	333
BUILT ENVIRONMENT	86	401	91	307	51	352	61	324	61	344
Civil Engineering	37	455	86	339	46	355	42	326	61	361
Construction Management & Surveying	38	351	69	267	30	364	33	317	35	336
Urban Studies	11	390	22	311	21	329	28	330	26	313
ENGINEERING & PHYSICAL SCIENCES	264	443	338	375	248	335	205	336	265	321
Chemical Engineering	58	472	71	400	46	343	38	374	33	368
Chemistry	58	428	61	391	57	313	47	325	72	301
Electrical, Electronic & Computer Engineering	34	415	36	339	25	312	24	318	28	322
Mechanical Engineering	66	457	96	368	54	360	54	338	74	325
Physics	35	432	46	374	35	360	29	342	36	325
Combined Studies (BSc)			9	304	12	300	8	257	11	260
Engineering (BEng)	13	406	19	364	19	320	5	328	11	321
LIFE SCIENCES	115	384	138	336	115	299	102	309	110	290
Biology	39	424	18	352	42	289	41	303	52	291
Marine Science & Environmental Management										
Sport & Exercise Science	24	380	59	334	49	293	37	318	34	278
Psychology	52	355	61	333	24	328	24	305	24	307
MANAGEMENT & LANGUAGES	191	406	306	338	197	339	224	340	232	326
Accountancy & Finance	45	401	119	300	51	335	57	340	64	327
Economics	26	380	36	345	21	314	26	294	33	291
Languages (incl Bus & Lang)	66	441	74	386	60	360	71	380	53	375
Management	39	421	69	352	64	331	68	321	73	312
Management (Scottish Borders Campus)	15	269	8	300	1	264	2	210	9	259
MATHEMATICAL & COMPUTER SCIENCES	194	444	215	381	155	352	108	349	175	384
Actuarial Mathematics & Statistics	72	488	67	474	63	426	31	411	71	471
Computer Science	62	417	67	332	35	279	31	312	55	315
Mathematics	60	418	81	345	57	316	46	333	49	337
TEXTILES & DESIGN	106	376	187	297	73	315	73	300	42	331

No of entrants in italics

Note that entrants to some of the courses based in the School of Textiles and Design are admitted on the basis of their portfolio as well as academic qualifications.

* UCAS points allocated to Highers, Advanced Highers, A Levels, Advanced Subsidiaries, Vocational A Levels and Vocational Double Awards.

**QUALIFICATIONS HELD BY FULL-TIME UNDERGRADUATE NEW ENTRANTS: 2010 ENTRY
Holders of All Tariffable Qualifications**

SCHOOL/Programme	* TOTAL UCAS POINTS	
	2010 Entry	
	Nos	Tariff
UNIVERSITY TOTAL	1027	399
BUILT ENVIRONMENT	102	349
Civil Engineering	39	442
Construction Management & Surveying	50	281
Urban Studies	13	332
ENGINEERING & PHYSICAL SCIENCES	275	433
Chemical Engineering	58	469
Chemistry	59	429
Electrical, Electronic & Computer Engineering	38	356
Mechanical Engineering	71	450
Physics	36	436
Combined Studies (BSc)		
Engineering (BEng)	13	406
LIFE SCIENCES	121	372
Biology	43	401
Sport & Exercise Science	24	380
Psychology	54	345
MANAGEMENT & LANGUAGES	218	381
Accountancy & Finance	58	344
Economics	31	361
Languages (incl Bus & Lang)	68	441
Management	46	389
Management (Scottish Borders Campus)	15	269
MATHEMATICAL & COMPUTER SCIENCES	198	438
Actuarial Mathematics & Statistics	72	488
Computer Science	66	411
Mathematics	60	407
TEXTILES & DESIGN	113	355

No of entrants in italics

Note that entrants to some of the courses based in the School of Textiles and Design are admitted on the basis of their portfolio as well as academic qualifications.

* UCAS points allocated to all tariffable qualifications

UNDERGRADUATE STUDENT PROGRESSION: 2007/08 - 2010/11

ALL YEARS: On-Campus - Scotland

SCHOOL: Programme	2009/10 to 2010/11				2008/09 to 2009/10				2007/08 to 2008/09				Total								
	Awarded degree/awarded or eligible for other qualification	Continuing as registered students in 2010/11	Withdrawn from the University	Total	Awarded degree/awarded or eligible for other qualification	Continuing as registered students in 2009/10	Withdrawn from the University	Total	Awarded degree/awarded or eligible for other qualification	Continuing as registered students in 2008/09	Withdrawn from the University	Total									
UNIVERSITY TOTAL	1650	27.6%	4001	66.9%	332	5.5%	5983	1574	27.0%	3948	67.8%	299	5.1%	5821	1619	29.4%	3635	65.9%	259	4.7%	5513
BUILT ENVIRONMENT	174	21.5%	588	72.8%	46	5.7%	808	205	25.7%	546	68.5%	46	5.8%	797	174	26.9%	507	69.0%	21	4.0%	702
Architectural Engineering	10	14.3%	56	80.0%	4	5.7%	70	12	20.3%	42	71.2%	5	8.5%	59	80	30.2%	175	66.0%	10	3.8%	265
Civil Engineering	67	18.6%	278	77.0%	16	4.4%	361	71	22.6%	230	73.2%	13	4.1%	314	60	20.9%	220	76.7%	7	2.4%	287
Construction Management & Surveying	55	23.4%	162	68.9%	18	7.7%	235	69	27.0%	174	68.0%	13	5.1%	256	34	22.7%	112	74.7%	4	2.7%	150
Urban Studies	42	29.6%	92	64.8%	8	5.6%	142	53	31.5%	100	59.5%	15	8.9%	168	418	30.2%	883	63.7%	85	6.1%	1386
ENGINEERING & PHYSICAL SCIENCES	479	31.5%	936	61.5%	108	7.1%	1523	359	24.3%	1017	68.9%	99	6.7%	1475	31	19.6%	118	74.7%	9	5.7%	158
Chemical Engineering	42	18.1%	171	73.7%	19	8.2%	232	27	14.4%	152	80.9%	9	4.8%	188	71	25.8%	186	67.6%	18	6.5%	275
Chemistry	100	34.1%	179	61.1%	14	4.8%	293	69	25.2%	192	70.1%	13	4.7%	274	79	46.7%	78	46.2%	12	7.1%	169
Combined Studies (BSc/BEng)	80	43.7%	91	49.7%	12	6.6%	183	60	38.5%	85	54.5%	11	7.1%	156	59	28.6%	127	61.7%	20	9.7%	206
Electrical, Electronic & Computer Engineering	53	29.9%	107	60.5%	17	9.6%	177	50	24.8%	136	67.3%	16	7.9%	202	110	26.6%	286	69.1%	18	4.3%	414
Mechanical Engineering	143	31.4%	286	62.7%	27	5.9%	456	100	20.1%	352	70.7%	46	9.2%	498	68	41.5%	88	53.7%	8	4.9%	164
Physics	61	33.5%	102	56.0%	19	10.4%	182	53	33.8%	100	63.7%	4	2.5%	157	166	29.4%	383	67.8%	16	2.8%	565
LIFE SCIENCES	208	29.7%	459	65.6%	33	4.7%	700	148	25.0%	419	70.7%	26	4.4%	593	106	34.2%	194	62.6%	10	3.2%	310
Biology	126	37.1%	203	59.7%	11	3.2%	340	90	29.6%	203	66.8%	11	3.6%	304	34	26.8%	91	71.7%	2	1.6%	127
Psychology	45	25.1%	123	68.7%	11	6.1%	179	33	24.3%	100	73.5%	3	2.2%	136	26	20.3%	98	76.6%	4	3.1%	128
Sport & Exercise Science	37	20.4%	133	73.5%	11	6.1%	181	25	16.3%	116	75.8%	12	7.8%	153	521	31.3%	1047	62.8%	99	5.9%	1667
MANAGEMENT & LANGUAGES	421	27.4%	1030	67.1%	83	5.4%	1534	522	31.2%	1077	64.4%	74	4.4%	1673	125	28.6%	292	66.8%	20	4.6%	437
Accountancy & Finance	124	27.3%	308	67.8%	22	4.8%	454	117	25.6%	318	69.6%	22	4.8%	457	35	55.6%	26	41.3%	2	3.2%	63
Combined Studies (BA)	30	69.8%	10	23.3%	3	7.0%	43	25	62.5%	14	35.0%	1	2.5%	40	31	19.1%	121	74.7%	10	6.2%	162
Economics	50	27.2%	130	70.7%	4	2.2%	184	33	19.6%	132	78.6%	3	1.8%	168	89	27.0%	223	67.6%	18	5.5%	330
Languages	68	20.9%	234	72.0%	23	7.1%	325	98	31.0%	202	63.9%	16	5.1%	316	141	29.8%	313	66.2%	19	4.0%	473
Management	120	27.3%	299	68.0%	21	4.8%	440	171	30.6%	367	65.7%	21	3.8%	559	53	54.1%	37	37.8%	8	8.2%	98
Management (SBC)	29	33.0%	49	55.7%	10	11.4%	88	44	44.4%	44	44.4%	11	11.1%	99	47	45.2%	35	33.7%	22	21.2%	104
Management Link Programme	226	26.1%	607	70.2%	32	3.7%	865	183	23.9%	554	72.3%	29	3.8%	766	181	26.0%	489	70.2%	27	3.9%	697
MATHEMATICAL & COMPUTER SCIENCES	85	27.6%	220	71.4%	3	1.0%	308	50	17.9%	223	79.9%	6	2.2%	279	56	23.0%	184	75.4%	4	1.6%	244
Actuarial Mathematics & Statistics	75	28.5%	173	65.8%	15	5.7%	263	86	33.6%	155	60.5%	15	5.9%	256	64	27.1%	158	66.9%	14	5.9%	236
Computer Science	66	22.4%	214	72.8%	14	4.8%	294	47	20.3%	176	76.2%	8	3.5%	231	61	28.1%	147	67.7%	9	4.1%	217
TEXTILES & DESIGN	142	25.7%	381	68.9%	30	5.4%	553	157	30.4%	335	64.8%	25	4.8%	517	159	32.1%	326	65.7%	11	2.2%	496
Combined Studies	5	55.6%	3	33.3%	1	11.1%	9	157	30.4%	335	64.8%	25	4.8%	517	159	32.1%	326	65.7%	11	2.2%	496
Textiles & Design	137	25.2%	378	69.5%	29	5.3%	544														

Includes full- and part-time students. Includes home students on a year abroad as part of their studies. Excludes registered incoming exchange and non-graduating students.

Withdrawal figures include those who have left the University for either academic or personal reasons.

"Other qualifications" include the Diploma and the Certificate of Higher Education.

UNDERGRADUATE STUDENT PROGRESSION (Split UK and EU/ other overseas): 2009/10 to 2010/11

ALL YEARS: On-Campus - Scotland

SCHOOL: Programme	Awarded degree/ awarded or deemed eligible for other qualification			Continuing as registered students in 2010-11			Withdrawn from the University			Total							
	UK		EU & Overseas	UK		EU & Overseas	UK		EU & Overseas	UK		EU & Overseas					
	1037	62.8%	544	33.0%	1650	Total	3370	84.2%	631	15.8%	4001	Total	4729	79.0%	1254	21.0%	5983
UNIVERSITY TOTAL	137	78.7%	37	21.3%	174	588	489	84.9%	89	15.1%	588	46	671	26.9%	137	69.0%	808
BUILT ENVIRONMENT	8	80.0%	2	20.0%	10	56	48	85.7%	8	14.3%	56	4	58	82.9%	12	17.1%	70
Architectural Engineering	49	73.1%	18	26.9%	67	278	222	79.9%	56	20.1%	278	16	283	78.4%	78	21.6%	361
Civil Engineering	45	81.8%	10	18.2%	55	162	149	92.0%	13	8.0%	162	18	209	88.9%	26	11.1%	235
Construction Management & Surveying	35	83.3%	7	16.7%	42	92	80	87.0%	12	13.0%	92	8	121	85.2%	21	14.8%	142
Urban Studies																	
ENGINEERING & PHYSICAL SCIENCES	266	55.5%	213	44.5%	479	936	790	84.4%	146	15.6%	936	108	1136	74.6%	387	25.4%	1523
Chemical Engineering	32	76.2%	10	23.8%	42	171	146	85.4%	25	14.6%	171	19	195	84.1%	37	15.9%	232
Chemistry	44	44.0%	56	56.0%	100	179	155	86.6%	24	13.4%	179	14	210	71.7%	83	28.3%	293
Combined Studies (BSc/BEng)	58	72.5%	22	27.5%	80	91	82	90.1%	9	9.9%	91	12	150	82.0%	33	18.0%	183
Electrical, Electronic & Computer Engineering	30	56.6%	23	43.4%	53	107	86	80.4%	21	19.6%	107	17	121	68.4%	56	31.6%	177
Computer Engineering	77	53.8%	66	46.2%	143	286	232	81.1%	54	18.9%	286	27	329	72.1%	127	27.9%	456
Mechanical Engineering	25	41.0%	36	59.0%	61	102	89	87.3%	13	12.7%	102	19	131	72.0%	51	28.0%	182
Physics																	
LIFE SCIENCES	77	37.0%	62	29.8%	208	459	427	93.0%	32	7.0%	459	33	603	86.1%	97	13.9%	700
Biology	69	54.8%	57	45.2%	126	203	182	89.7%	21	10.3%	203	11	260	76.5%	80	23.5%	340
Psychology	42	93.3%	3	6.7%	45	123	115	93.5%	8	6.5%	123	11	167	93.3%	12	6.7%	179
Sport & Exercise Science	35	94.6%	2	5.4%	37	133	130	97.7%	3	2.3%	133	11	176	97.2%	5	2.8%	181
MANAGEMENT & LANGUAGES	255	60.6%	166	39.4%	421	1030	799	77.6%	231	22.4%	1030	83	1113	72.6%	421	27.4%	1534
Accountancy & Finance	89	71.8%	35	28.2%	124	308	242	78.6%	66	21.4%	308	22	348	76.7%	106	23.3%	454
Combined Studies (BA)	8	26.7%	22	73.3%	30	10	5	50.0%	5	50.0%	10	3	14	32.6%	29	67.4%	43
Economics	28	56.0%	22	44.0%	50	130	94	72.3%	36	27.7%	130	4	124	67.4%	60	32.6%	184
Languages	50	73.5%	18	26.5%	68	234	190	81.2%	44	18.8%	234	23	261	80.3%	64	19.7%	325
Management	77	64.2%	43	35.8%	120	299	241	80.6%	58	19.4%	299	21	332	75.5%	108	24.5%	440
Management (SBC)	3	10.3%	26	89.7%	29	49	27	55.1%	22	44.9%	49	10	34	38.6%	54	61.4%	88
MATHEMATICAL & COMPUTER SCIENCES	168	74.3%	58	25.7%	226	607	489	80.6%	118	19.4%	607	32	681	78.7%	184	21.3%	865
Actuarial Mathematics & Statistics	59	69.4%	26	30.6%	85	220	151	68.6%	69	31.4%	220	3	212	68.8%	96	31.2%	308
Computer Science	55	73.3%	20	26.7%	75	173	146	84.4%	27	15.6%	173	15	211	80.2%	52	19.8%	263
Mathematics	54	81.8%	12	18.2%	66	214	192	89.7%	22	10.3%	214	14	258	87.8%	36	12.2%	294
TEXTILES & DESIGN	134	94.4%	8	5.6%	142	381	366	96.1%	15	3.9%	381	30	525	94.9%	28	5.1%	553
Combined Studies	5	100.0%			5	3	3	96.0%	15	4.0%	378	1	9	94.9%	28	5.1%	9
Textiles & Design	129	94.2%	8	5.8%	137	378	363	96.0%	15	4.0%	378	29	516	94.9%	28	5.1%	544

UNDERGRADUATE STUDENT PROGRESSION: 2007/08 - 2010/11

FRESHERS ONLY: On-Campus - Scotland

SCHOOL: Programme	2009/10 to 2010/11				2008/09 to 2009/10				2007/08 to 2008/09				Total
	Awarded degree/ or eligible for other qualification	Continuing as registered students in 2010/11	Withdrawn from the University	Total	Awarded degree/ or eligible for other qualification	Continuing as registered students in 2009/10	Withdrawn from the University	Total	Awarded degree/ or eligible for other qualification	Continuing as registered students in 2008/09	Withdrawn from the University	Total	
UNIVERSITY TOTAL	293	1627	292	2212	260	1519	226	2005	264	1332	195	1791	
BUILT ENVIRONMENT	14	221	45	280	26	122	24	172	11	122	16	149	
Architectural Engineering		23	4	27		12	4	16		71	4	84	
Civil Engineering	10	104	16	130	8	76	12	96	9	77	9	97	
Construction Management & Surveying	3	65	18	86	15	87	13	115	11	79.4%	9	97	
Urban Studies	1	29	7	37	11	35	11	57		0.0%	7	52	
ENGINEERING & PHYSICAL SCIENCES	128	361	92	581	106	402	82	590	136	331	67	534	
Chemical Engineering		71	18	89	1	61	6	68	2	53	9	64	
Chemistry	42	69	13	124	20	71	13	104	29	63	11	103	
Combined Studies (BSc/BEng)	10	24	8	42	13	28	7	48	6	15	7	28	
Electrical, Electronic & Computer Engineering	11	47	17	75	9	63	16	88	14	53	20	87	
Mechanical Engineering	37	109	22	168	33	136	37	206	39	109	13	161	
Physics	28	41	14	83	30	43	3	76	46	38	7	91	
LIFE SCIENCES	47	205	30	282	23	163	15	201	30	153	13	196	
Biology	42	86	10	138	21	76	7	104	26	78	8	112	
Psychology	1	68	9	78		35	1	36	2	36	2	40	
Sport & Exercise Science	4	51	11	66	2	52	7	61	2	39	3	44	
MANAGEMENT & LANGUAGES	77	402	71	550	69	457	58	584	58	414	71	543	
Accountancy & Finance	12	127	20	159	12	124	18	154	6	111	15	132	
Combined Studies (BA)	18	1	4	19	4	49	1	54	6	2	0	8	
Economics	5	57	4	66	4	74	1	87	1	50	9	60	
Languages	5	93	22	120	1	74	12	87	5	86	16	107	
Management	13	91	15	119	16	180	17	213	16	114	12	142	
Management (Scottish Borders Campus)		33	10	67	32	30	9	71	24	25	7	56	
Management Link										26	12	38	
MATHEMATICAL & COMPUTER SCIENCES	18	267	27	312	23	221	26	270	16	170	21	207	
Actuarial Mathematics & Statistics		97	3	100	1	94	5	100		56	4	60	
Computer Science	15	81	13	109	20	55	14	89	15	57	9	81	
Mathematics	3	89	11	103	2	72	7	81	1	57	8	66	
TEXTILES & DESIGN	9	171	27	207	13	154	21	188	13	142	7	162	
Textiles & Design	9	171	27	207	13	154	21	188	13	142	7	162	

Includes full- and part-time students. Includes home students on a year abroad as part of their studies. Excludes registered incoming exchange and non-graduating students.
 Withdrawal figures include those who have left the University for either academic or personal reasons.
 Other qualifications include the Diploma and the Certificate of Higher Education.
 School of the Built Environment programmes were reconfigured in 2009/10.

UNDERGRADUATE STUDENT PROGRESSION: 2009/10 to 2010/11

ALL YEARS: On-Campus - Dubai

2009/10 to 2010/11

SCHOOL: Programme	Awarded degree/awarded or eligible for other qualification	Continuing as registered students in 2009/10	Withdrawn from the University	Total			
UNIVERSITY TOTAL	104	17.0%	474	77.7%	32	5.2%	610
BUILT ENVIRONMENT	32	47.8%	28	41.8%	7	10.4%	67
Civil Engineering	3	15.8%	14	73.7%	2	10.5%	19
Construction Management & Surveying	29	60.4%	14	29.2%	5	10.4%	48
ENGINEERING & PHYSICAL SCIENCES	29	14.7%	159	80.7%	9	4.6%	197
Electrical, Electronic & Computer Engineering	7	11.3%	54	87.1%	1	1.6%	62
Mechanical Engineering	22	16.3%	105	77.8%	8	5.9%	135
MANAGEMENT & LANGUAGES	36	11.3%	271	84.7%	13	4.1%	320
Accountancy & Finance	10	10.6%	82	87.2%	2	2.1%	94
Management	26	11.5%	189	83.6%	11	4.9%	226
TEXTILES & DESIGN	7	26.9%	16	61.5%	3	11.5%	26
Textiles & Design	7	26.9%	16	61.5%	3	11.5%	26

Includes full- and part-time students. Excludes registered incoming exchange and non-graduating students. Withdrawal figures include those who have left the University for either academic or personal reasons.

UNDERGRADUATE STUDENT PROGRESSION: 2009/10 to 2010/11

FRESHERS ONLY: On-Campus - Dubai

2009/10 to 2010/11

SCHOOL: Programme	Awarded degree/awarded or eligible for other qualification	Continuing as registered students in 2009/10	Withdrawn from the University	Total			
UNIVERSITY TOTAL	28	7.5%	316	84.3%	31	8.3%	375
BUILT ENVIRONMENT	10	23.8%	26	61.9%	6	14.3%	42
Civil Engineering	3	15.8%	14	73.7%	2	10.5%	19
Construction Management & Surveying	7	30.4%	12	52.2%	4	17.4%	23
ENGINEERING & PHYSICAL SCIENCES	5	5.0%	86	86.0%	9	9.0%	100
Electrical, Electronic & Computer Engineering	3	9.4%	28	87.5%	1	3.1%	32
Mechanical Engineering	2	2.9%	58	85.3%	8	11.8%	68
MANAGEMENT & LANGUAGES	6	2.9%	188	90.8%	13	6.3%	207
Accountancy & Finance	48	96.0%	2	4.0%	2	4.0%	50
Management	6	3.8%	140	89.2%	11	7.0%	157
TEXTILES & DESIGN	7	26.9%	16	61.5%	3	11.5%	26
Textiles & Design	7	26.9%	16	61.5%	3	11.5%	26

FIRST DEGREES & OTHER AWARDS: 2010 - Dubai Campus

SCHOOL/Programme	EFD	Honours 1st	2.1	% EFD, 1, 2.1	92	92	1	2.2	with 2.2	hons	Ord Yr 3	Total
UNIVERSITY TOTAL	22	7	5	92	92	1	2	63	78			
BUILT ENVIRONMENT												
Construction Management & Surveying												
Urban Studies												
ENGINEERING & PHYSICAL SCIENCES	22	7	5	97	92	1	10	23	24			
Electrical, Electronic & Comp Eng												
Mechanical Engineering	22	7	5	97	92	1	7	20	24			
MANAGEMENT & LANGUAGES												
Accountancy & Finance												
Management												

HIGHER DEGREES AND OTHER AWARDS: 2010 - Dubai Campus

SCHOOL/Programme	Taught Master	PgDip	PgCert	Grad Cert/Dip	Grad Cert/Dip	Total
UNIVERSITY TOTAL	153	15	9			177
BUILT ENVIRONMENT	81	3	6			90
Construction Management & Surveying	81	3	5			89
Urban Studies			1			1
ENGINEERING & PHYSICAL SCIENCES	2					2
Electrical, Electronic & Computer Engineering						
Mechanical Engineering	2					2
MANAGEMENT & LANGUAGES	16	3	1			20
Accountancy and Finance						
Management	16	3	1			20
MATHEMATICAL & COMPUTER SCIENCES	23	6	1			30
Computer Science	23	6	1			30
PETROLEUM ENGINEERING	31	3	1			35

GRADUATE FIRST DESTINATIONS (FIRST DEGREES): 2006/07 - 2009/10

SCHOOL/Division	2009/10 (January 2011 census)											2008/09 (January 2010 census)														
	No. of Known Dest (KD)	No. in Emp	% of KD	No. in Further Study	% of KD	% in Emp/Study (note 1)	Not Available/Not Seeking	% of KD	Seeking	% of KD	Total in Emp	No. in Graduate Level Job	% in Graduate Level Job	Total in Emp	No. in Graduate Level Job	% in Graduate Level Job										
UNIVERSITY TOTAL	723	511	70.7	116	16.0	92.1	45	6.2	54	7.5	511	373	73.0	488	69.6	116	16.5	91.9	44	6.3	53	7.6	488	336	68.9	
BUILT ENVIRONMENT	99	67	67.7	9	9.1	83.5	8	8.1	15	15.2	67	45	67.2	101	67	66.3	11	10.9	83.9	8	7.9	15	14.9	67	49	73.1
Building	35	24	68.6	3	8.6	81.8	2	5.7	6	17.1	24	17	70.8	35	23	65.7	5	14.3	84.8	2	5.7	5	14.3	23	16	69.6
Civil Engineering	42	30	71.4	4	9.5	87.2	3	7.1	5	11.9	30	21	70.0	41	28	68.3	4	9.8	82.1	2	4.9	7	17.1	28	22	78.6
Urban Studies	22	13	59.1	2	9.1	78.9	3	13.6	4	18.2	13	7	53.8	25	16	64.0	2	8.0	85.7	4	16.0	3	12.0	16	11	68.8
LIFE SCIENCES	92	60	65.2	15	16.3	92.6	11	12.0	6	6.5	60	31	51.7	74	49	66.2	14	18.9	90.0	4	5.4	7	9.5	49	25	51.0
Biological Sciences	40	26	65.0	7	17.5	97.1	6	15.0	1	2.5	26	18	69.2	41	26	63.4	8	19.5	87.2	2	4.9	5	12.2	26	17	65.4
Psychology	29	17	58.6	4	13.8	84.0	4	13.8	4	13.8	17	6	35.3	18	13	72.2	3	16.7	88.9	2	11.1	2	11.1	13	3	23.1
Sport & Exercise Science	23	17	73.9	4	17.4	95.5	1	4.3	1	4.3	17	7	41.2	15	10	66.7	3	20.0	100.0	2	13.3			10	5	50.0
ENGINEERING & PHYSICAL SCIENCES	162	97	59.9	46	28.4	91.1	5	3.1	14	8.6	97	72	74.2	154	95	61.7	41	26.6	91.9	6	3.9	12	7.8	95	74	77.9
Chemical Engineering	24	18	75.0	4	91.7				2	8.3	18	16	88.9	17	16	94.1			94.1			1	5.9	16	14	87.5
Chemistry	33	15	45.5	14	42.4	93.5	2	6.1	2	6.1	15	8	53.3	40	17	42.5	19	47.5	92.3	1	2.5	3	7.5	17	14	82.4
Mechanical Engineering	57	36	63.2	14	24.6	90.9	2	3.5	5	8.8	36	29	80.6	40	28	70.0	7	17.5	89.7	1	2.5	4	10.0	28	23	82.1
Physics	18	10	55.6	5	27.8	88.2	1	5.6	2	11.1	10	6	60.0	18	8	44.4	6	33.3	82.4	1	5.6	3	16.7	8	5	62.5
Electrical, Electronic & Computer Engineering	21	14	66.7	5	23.8	90.5			2	9.5	14	11	78.6	25	19	76.0	4	16.0	100.0	2	8.0			19	15	78.9
Combined Studies	9	4	44.4	4	44.4	88.9			1	11.1	4	2	50.0	14	7	50.0	5	35.7	92.3	1	7.1	1	7.1	7	3	42.9
MANAGEMENT & LANGUAGES	166	128	77.1	21	12.7	95.5	10	6.0	7	4.2	128	95	74.2	186	148	79.6	17	9.1	94.3	11	5.9	10	5.4	148	100	67.6
Accountancy & Finance	59	48	81.4	6	10.2	91.5			5	8.5	48	38	79.2	49	41	83.7	2	4.1	95.6	4	8.2	2	4.1	41	27	66.9
Economics	22	13	59.1	5	22.7	100.0	4	18.2			13	9	69.2	13	7	53.8	4	30.8	91.7	1	7.7	1	7.7	7	3	42.9
Management	55	41	74.5	9	16.4	98.0	4	7.3	1	1.8	41	26	63.4	72	57	79.2	8	11.1	95.6	4	5.6	3	4.2	57	39	68.4
Management (Scottish Borders Campus)	2	2	100.0								2	2	100.0	5	5	100.0								5	3	60.0
Languages	27	23	85.2	1	3.7	96.0	2	7.4	1	3.7	23	19	82.6	40	34	85.0	3	7.5	94.9	1	2.5	2	5.0	34	25	73.5
Combined Studies	1	1	100.0			100.0					1	1	100.0	7	4	57.1			66.7	1	14.3	2	28.6	4	3	75.0
MATHEMATICAL & COMPUTER SCIENCES	119	91	76.5	16	13.4	93.0	8	6.7	8	6.7	91	80	87.9	83	53	63.9	20	24.1	93.6	5	6.0	5	6.0	53	31	58.5
Actuarial Mathematics & Statistics	46	39	84.8	1	2.2	88.9	5	10.9	5	10.9	39	39	100.0	26	18	69.2	5			3	11.5			18	15	83.3
Computer Science	40	28	70.0	8	20.0	94.7	2	5.0	2	5.0	28	24	85.7	28	19	67.9	7	25.0	92.9			2	7.1	19	8	42.1
Mathematics	33	24	72.7	7	21.2	96.9	1	3.0	1	3.0	24	17	70.8	29	16	55.2	8	27.6	88.9	2	6.9	3	10.3	16	8	50.0
TEXTILES & DESIGN	85	68	80.0	9	10.6	95.1	3	3.5	4	4.7	68	50	73.5	103	76	73.8	13	12.6	95.7	10	9.7	4	3.9	76	57	75.0
Textiles	85	68	80.0	9	10.6	95.1	3	3.5	4	4.7	68	50	73.5	103	76	73.8	13	12.6	95.7	10	9.7	4	3.9	76	57	75.0

The census date for graduate first destinations is 6 months following graduation

'Employed' includes those due to start employment within the next month. 'Other' includes those who are not available for employment because of travel, family commitments, health or other reasons

Note 1: This is the percentage of those in employment and/or further study as against the aggregated total who are in employment and/or further study or reported as 'seeking'

Note 2: Graduate Employment is based on the SOC 2000 classification of occupations for studying the graduate labour market (Institute for Employment Research, Warwick)

SCHOOL/Division	2007/08 (January 2009 census)										2006/07 (January 2008 census)															
	No. of Known Dest (KD)	No. in Emp	% of KD	No. in Further Study	% of KD	% in Emp/Study (note 1)	Not Available/Not Seeking	% of KD	Seeking	% of KD	Total in Emp	No. in Graduate Level/Job	% in Graduate Level/Job (note 2)	No. of Known Dest (KD)	No. in Emp	% of KD	No. in Further Study	% of KD	% in Emp/Study (note 1)	Not Available/Not Seeking	% of KD	Seeking	% of KD	Total in Emp	No. in Graduate Level/Job	% in Graduate Level/Job (note 2)
UNIVERSITY TOTAL	683	512	73.9	76	11.0	91.7	52	7.5	53	7.6	512	400	78.1	772	601	77.8	80	10.4	94.8	54	7.0	37	4.8	601	465	77.4
BUILT ENVIRONMENT	96	76	79.2	6	6.3	95.3	10	10.4	4	4.2	76	67	88.2	107	88	82.2	3	2.8	94.8	11	10.3	5	4.7	88	83	94.3
Building	49	31	63.3	6	12.2	90.2	8	16.3	4	8.2	31	28	90.3	43	33	76.7	1	2.3	97.1	8	18.6	1	2.3	33	32	97.0
Civil Engineering	34	32	94.1			100.0	2	5.9			32	28	87.5	39	35	89.7	2	5.1	94.9			2	5.1	35	32	91.4
Urban Studies	13	13	100.0			100.0					13	11	84.6	25	20	80.0			90.9	3	12.0	2	8.0	20	19	95.0
LIFE SCIENCES	86	52	60.5	18	20.9	88.6	7	8.1	9	10.5	52	30	57.7	93	66	71.0	14	15.1	92.0	6	6.5	7	7.5	66	35	53.0
Biological Sciences	51	33	64.7	11	21.6	93.6	4	7.8	3	5.9	33	20	60.6	59	42	71.2	9	15.3	91.1	3	5.1	5	8.5	42	26	61.9
Psychology	21	13	61.9	3	14.3	80.0	1	4.8	4	19.0	13	6	46.2	16	11	68.8	1	6.3	85.7	2	12.5	2	12.5	11	3	27.3
Sport & Exercise Science	14	6	42.9	4	28.6	83.3	2	14.3	2	14.3	6	4	66.7	18	13	72.2	4	22.2	100.0	1	5.6			13	6	46.2
ENGINEERING & PHYSICAL SCIENCES	133	85	63.9	23	17.3	85.0	6	4.5	19	14.3	85	70	82.4	183	126	68.9	35	19.1	93.1	10	5.5	12	6.6	126	97	77.0
Chemical Engineering	20	15	75.0	1	5.0	84.2	1	5.0	3	15.0	15	13	86.7	18	15	83.3	2	11.1	94.4			1	5.6	15	14	93.3
Chemistry	19	8	42.1	9	47.4	89.5			2	10.5	8	7	87.5	44	18	40.9	20	45.5	95.0	4	9.1	2	4.5	18	14	77.8
Mechanical Engineering	43	30	69.8	4	9.3	85.0	3	7.0	6	14.0	30	27	90.0	55	41	74.5	3	5.5	86.3	4	7.3	7	12.7	41	37	90.2
Physics	13	6	46.2	4	30.8	83.3	1	7.7	2	15.4	6	6	100.0	14	11	78.6	2	14.3	92.9			1	7.1	11	6	54.5
Electrical, Electronic & Computer Engineering	20	13	65.0	3	15.0	84.2	1	5.0	3	15.0	13	10	76.9	23	16	69.6	7	30.4	100.0					16	13	81.3
Combined Studies	18	13	72.2	2	11.1	83.3			3	16.7	13	7	53.8	29	25	86.2	1	3.4	96.3	2	6.9	1	3.4	25	13	52.0
MANAGEMENT & LANGUAGES	182	140	76.9	15	8.2	92.3	14	7.7	13	7.1	140	99	70.7	193	162	83.9	11	5.7	96.6	14	7.3	6	3.1	162	118	72.8
Accountancy & Finance	46	39	84.8			90.7	3	6.5	4	8.7	39	29	74.4	41	33	80.5	1	2.4	97.1	6	14.6	1	2.4	33	24	72.7
Economics	16	13	81.3	2	12.5	100.0	1	6.3			13	10	76.9	30	25	83.3	2	6.7	93.1	1	3.3	2	6.7	25	22	88.0
Management	57	41	71.9	6	10.5	95.9	8	14.0	2	3.5	41	28	68.3	61	56	91.8	2	3.3	100.0	3	4.9			56	41	73.2
Management (Scottish Borders Campus)	12	9	75.0	3	25.0	100.0					9	7	77.8	9	9	100.0			100.0					9	6	66.7
Languages	42	31	73.8	4	9.5	85.4	1	2.4	6	14.3	31	21	67.7	38	28	73.7	4	10.5	91.4	3	7.9	3	7.9	28	19	67.9
Combined Studies	9	7	77.8			87.5	1	11.1	1	11.1	7	4	57.1	14	11	78.6	2	14.3	100.0	1	7.1			11	6	54.5
MATHEMATICAL & COMPUTER SCIENCES	91	74	81.3	8	8.8	93.2	3	3.3	6	6.6	74	59	79.7	115	93	80.9	9	7.8	94.4	7	6.1	6	5.2	93	78	83.9
Actuarial Mathematics & Statistics	24	23	95.8			100.0	1	4.2			23	22	95.7	20	18	90.0	1	5.0	100.0	1	5.0			18	18	100.0
Computer Science	31	23	74.2	3	9.7	86.7	1	3.2	4	12.9	23	17	73.9	55	42	76.4	5	9.1	92.2	4	7.3	4	7.3	42	33	78.6
Mathematics	36	28	77.8	5	13.9	94.3	1	2.8	2	5.6	28	20	71.4	40	33	82.5	3	7.5	94.7	2	5.0	2	5.0	33	27	81.8
TEXTILES & DESIGN	105	85	81.0	6	5.7	100.0	12	11.4	2	1.9	85	75.0	88.2	81	66	81.5	8	9.9	98.7	6	7.4	1	1.2	66	54.0	81.8
Textiles	105	85	81.0	6	5.7	97.8	12	11.4	2	1.9	85	75	88.2	81	66	81.5	8	9.9	98.7	6	7.4	1	1.2	66	54	81.8

The census date for graduate first destinations is 6 months following graduation
'Employed' includes those due to start employment within the next month. 'Other' includes those who are not available for employment because of travel, family commitments, health or other reasons

Note 1: This is the percentage of those in employment and/or further study as against the aggregated total who are in employment and/or further study or reported as 'seeking'

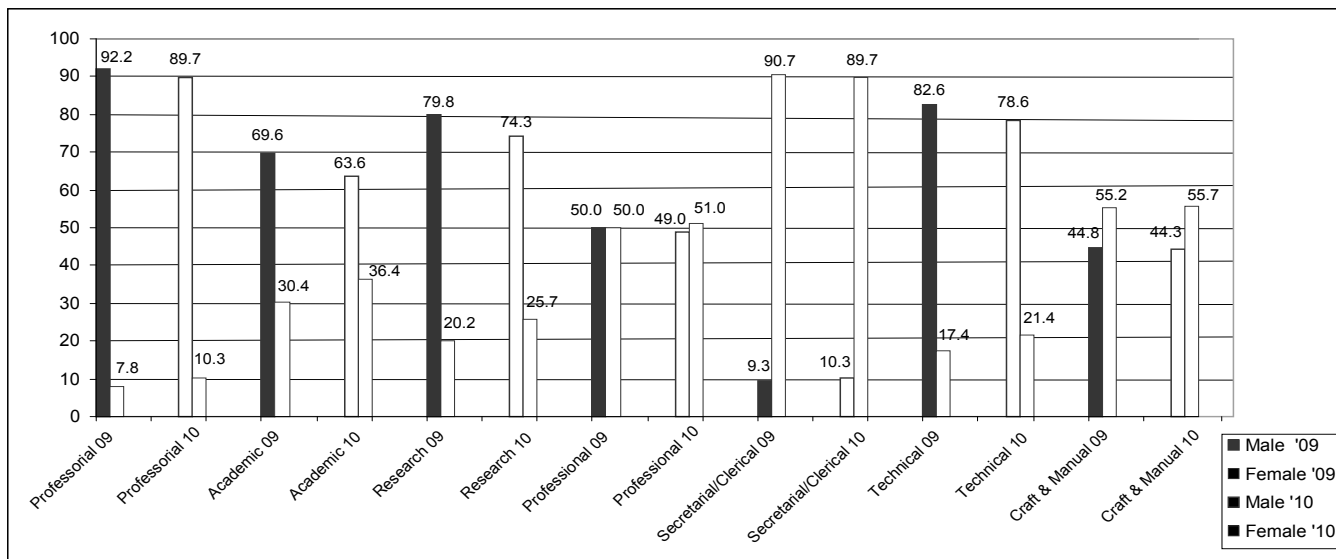
Note 2: Graduate Employment is based on the SOC 2000 classification of occupations for studying the graduate labour market (Institute for Employment Research, Warwick)

STAFF: 2009 - 2010

ALL STAFF BY CONTRACT TYPE: AT END DECEMBER 2009

GRADE RANGE	End December 2010					End December 2009				
	ft/pt	Gender	No.	% of category	% of all staff (Scotland)	ft/pt	Gender	No.	% of category	% of all staff (Scotland)
University Total	1800					1666				
Professional			136	100.0	7.8			128	100.0	7.9
	ft	F	14	10.3	0.8	ft	F	10	7.8	0.6
		M	112	82.4	6.4		M	102	79.7	6.3
	pt	F				pt	F			
		M	10	7.4	0.6		M	16	12.5	1.0
Academic (non-professional)			343	100.0	19.6			316	100.0	19.4
	ft	F	86	25.1	4.9	ft	F	71	22.5	4.4
		M	189	55.1	10.8		M	191	60.4	11.7
	pt	F	39	11.4	2.2	pt	F	25	7.9	1.5
		M	29	8.5	1.7		M	29	9.2	1.8
Research			175	100.0	10.0			173	100.0	10.6
	ft	F	36	20.6	2.1	ft	F	27	15.6	1.7
		M	120	68.6	6.8		M	121	69.9	7.4
	pt	F	9	5.1	0.5	pt	F	8	4.6	0.5
		M	10	5.7	0.6		M	17	9.8	1.0
Professional			529	100.0	30.2			504	100.0	30.9
	ft	F	196	37.1	11.2	ft	F	192	38.1	11.8
		M	247	46.7	14.1		M	241	47.8	14.8
	pt	F	74	14.0	4.2	pt	F	60	11.9	3.7
		M	12	2.3	0.7		M	11	2.2	0.7
Secretarial/Clerical			261	100.0	14.9			236	100.0	14.5
	ft	F	131	50.2	7.5	ft	F	126	53.4	7.7
		M	20	7.7	1.1		M	17	7.2	1.0
	pt	F	103	39.5	5.9	pt	F	88	37.3	5.4
		M	7	2.7	0.4		M	5	2.1	0.3
Technical			28	100.0	1.6			23	100.0	1.4
	ft	F	4	14.3	0.2	ft	F	2	8.7	0.1
		M	19	67.9	1.1		M	18	78.3	1.1
	pt	F	2	7.1	0.1	pt	F	2	8.7	0.1
		M	3	10.7	0.2		M	1	4.3	0.1
Craft			27	100.0	1.5			27	100.0	1.7
	ft	M	26	96.3	1.5	ft	M	26	96.3	1.6
	pt	M	1	3.7	0.1	pt	M	1	3.7	0.1
Manual			255	100.0	14.5			259	100.0	15.9
	ft	F	50	19.6	2.9	ft	F	53	20.5	3.3
		M	84	32.9	4.8		M	84	32.4	5.2
	pt	F	107	42.0	6.1	pt	F	105	40.5	6.4
		M	14	5.5	0.8		M	17	6.6	1.0
Dubai Campus			46	100.0				36	100.0	
	ft	F	14	30.4		ft	F	6	16.7	
		M	28	60.9			M	23	63.9	
	pt	F	1	2.2		pt	F	1	2.8	
		M	3	6.5			M	6	16.7	

ALL STAFF BY GENDER & CONTRACT TYPE: PERCENTAGE OF TOTAL



Contact us

HERIOT-WATT UNIVERSITY

Edinburgh Campus

Edinburgh EH14 4AS

☎ 0131 449 5111

Scottish Borders Campus

Galashiels TD1 3HF

☎ 01896 753351

Orkney Campus

Old Academy, Back Road, Stromness

Orkney Islands

Scotland KW16 3AW

☎ 01856 850 605

Dubai Campus

Dubai International Academic City

PO Box 294345

Dubai

U.A.E

☎ 00 971 4361 6999

CORPORATE COMMUNICATIONS

☎ 0131 451 3242

@ pr@hw.ac.uk

STUDENT RECRUITMENT AND ADMISSIONS

☎ 0131 451 3451

@ edu.liaison@hw.ac.uk

RESEARCH & ENTERPRISE SERVICES

(Formerly Technology Research Services)

☎ 0131 451 3192

@ res@hw.ac.uk