

annual statistics 2013-2014

Contents

	Page(s)
1 PROFILE AT A GLANCE	3
2 STUDENT NUMBERS	5 – 19
- Undergraduate (On-campus Scotland)	6 – 8
- Postgraduate Taught (On-campus Scotland)	9 – 11
- Postgraduate Research (On-campus Scotland)	12 – 14
- On-campus Dubai	15 – 16
- Undergraduate Exchange, Non-graduating and Visiting Students	17
- Student Domiciles	17 – 19
3 TRANSNATIONAL DEGREE PROGRAMMES	20 – 21
- Approved Learning Partners and Distance Learning	20
- Approved Learning Partners	21
4 UNDERGRADUATE STUDENT APPLICATIONS & ADMISSIONS	22
5 DEGREES AWARDED	23 – 25
- First and Higher Degrees (On-campus Scotland and International)	23 – 24
- First and Higher Degrees (On-campus Dubai)	25
6 UNDERGRADUATE STUDENT PROGRESSION (ALL STUDENTS/ FRESHERS ONLY)	26 – 29
7 GRADUATE FIRST DESTINATIONS (FIRST DEGREES)	30 – 31
8 NATIONAL STUDENT SURVEY RESULTS	32 – 33
9 STAFF NUMBERS	34

If you would like a large print version of this document please contact the Secretariat, Tel: 0131 451 3365.

Notes

This report is published annually. Suggestions for future enhancements are welcome. Please direct any comments or enquiries to the Secretariat:

Lorna Kirkwood-Smith, Tel: 0131 451 3631, Email: L.A.Kirkwood-Smith@hw.ac.uk or
Julie Brown, Tel: 0131 451 3365, Email: J.Brown@hw.ac.uk

Student numbers information is extracted from a 'snap-shot' of the student database at a census date in early December each year.

The report is available on the staff section of the University's web home page under Management & Governance/ Strategy & Performance, and is included in the University's Freedom of Information Publication Scheme at: www.hw.ac.uk/foi/

More detailed reporting may be available from contributing sections. Contact details are provided below.

July 2014

CONTACTS

Academic Registry and Student Services:

Jean Campbell, Management Information Analyst, Ext: 3383, Email: J.M.Campbell@hw.ac.uk
Careers Advisory Service – Nick Thow, Director, Ext: 3392, Email: N.W.Thow@hw.ac.uk (First Destination data)

Secretariat:

Lorna Kirkwood-Smith, Head, Ext: 3631, Email: L.A.Kirkwood-Smith@hw.ac.uk
Julie Brown, Assistant to the Secretariat, Ext 3365, Email: J.Brown@hw.ac.uk

Recruitment & Admissions:

Michael Bates, Director, Ext: 3450, Email: M.Bates@hw.ac.uk (Recruitment and Admissions data)

Edinburgh Business School:

Adrian Carberry, Administration Manager, Ext: 3938, Email: A.Carberry@hw.ac.uk

HERIOT-WATT UNIVERSITY: PROFILE AT A GLANCE

Founded: 1821. Granted university status by Royal Charter in 1966.

Campus Locations: Edinburgh, Galashiels, Orkney, Dubai, Malaysia

The University's main Edinburgh campus comprises 380 acres of parkland and incorporates the Edinburgh Research Park established in 1971 as the first science park of its kind in the UK. In excess of 40 companies are currently based on the Research Park. In 2009, work was completed to co-locate with Scottish Borders College at the Netherdale Campus in Galashiels.

The University's International Centre for Island Technology based in Stromness, Orkney Islands (Orkney Campus), is part of the University's School of Life Sciences. The Centre concentrates on renewable energy, particularly marine energy.

In November 2011, Heriot-Watt University won a major international tender to establish a new purpose-built University Campus in Putrajaya, Malaysia. The Heriot-Watt Malaysia Campus will create opportunities for up to 4,000 undergraduate and postgraduate students to study degree-level programmes in science, business, engineering, mathematics and design. The Campus has been open since early 2013 offering a range of postgraduate programmes and the Undergraduate Foundation Programme. Substantial growth in undergraduate and postgraduate programmes will take place from autumn 2014 when the new campus building formally opens.

Student population:

On-campus (Edinburgh, Orkney):-

- 5,924 undergraduate (including exchange and visiting students)
- 1,368 postgraduate taught course
- 710 postgraduate research

On-campus (Scottish Borders Campus)

- 570 undergraduate (including exchange and visiting students)
- 14 postgraduate taught course
- 14 postgraduate research

On-campus (Dubai)

- 2,381 undergraduate
- 1,102 postgraduate taught course

About one third of the University's 'on campus' students studying in Scotland are from outside of the UK making Heriot-Watt one of the most internationally diversified of any UK universities.

Transnational programmes (independent study in around 157 countries worldwide or through a network of 46 Approved Learning Partners (ALPs). In HESA reporting year ending 31 July 2013 there were:

- 9,445 active matriculated ALP students
- 4,785 active matriculated independent (distance learning) students

Including all active students (registered or not yet registered for full degree programmes), the University had a population of more than 18,000 transnational programme students.

Staff population: Total:1,968 (headcount) of which:-

On-Campus (Scottish Campus):-

- 540 academic
- 212 research staff
- 539 professional (non academic)
- 579 other staff (incl non standard contract staff)

On-Campus (Dubai Campus):-

- 50 academic
- 9 professional (non academic)
- 7 other staff (incl non standard contract staff)

On-Campus (Malaysia Campus):-

- 7 academic
- 25 other staff (incl non standard contract staff)

STUDENT NUMBERS (ON CAMPUS IN SCOTLAND): 2011/12 - 2013/14

UNDERGRADUATE students by attendance level and gender

2013/14						2012/13						2011/12					
	ft	pt	Total	%	% change yr/yr		ft	pt	Total	%	% change yr/yr		ft	pt	Total	%	% change yr/yr
Total	6,179	94	6,273	100	8	Total	5,706	94	5,800	100	3	Total	5,551	87	5,638	100	3
Female	2,706	32	2,738	44	10	Female	2,465	30	2,495	43	5	Female	2,349	23	2,372	42	5
Male	3,473	62	3,535	56	7	Male	3,241	64	3,305	57	1	Male	3,202	64	3,266	58	1

Includes home students on a year abroad or on placement as part of their studies.

Excludes registered incoming exchange, non-graduating and visiting students. These are detailed on page 17.

POSTGRADUATE TAUGHT COURSE students by attendance level and gender

2013/14						2012/13						2011/12					
	ft	pt	Total	%	% change yr/yr		ft	pt	Total	%	% change yr/yr		ft	pt	Total	%	% change yr/yr
Total	1,288	94	1,382	100	-3	Total	1,308	112	1,420	100	-3	Total	1,369	102	1,471	100	0
Female	498	40	538	39	-6	Female	523	47	570	40	-3	Female	544	42	586	40	14
Male	790	54	844	61	-1	Male	785	65	850	60	-4	Male	825	60	885	60	-8

Excludes staff registrations for the Postgraduate Certificate in Academic Practice.

Excludes very small numbers of registered incoming exchange, non-graduating and other visiting students.

POSTGRADUATE RESEARCH students by attendance level and gender

2013/14						2012/13						2011/12					
	ft	pt	Total	%	% change yr/yr		ft	pt	Total	%	% change yr/yr		ft	pt	Total	%	% change yr/yr
Total	663	61	724	100	10	Total	608	52	660	100	18	Total	516	45	561	100	7
Female	205	21	226	31	18	Female	176	16	192	29	18	Female	151	12	163	29	3
Male	458	40	498	69	6	Male	432	36	468	71	18	Male	365	33	398	71	9

Includes small numbers of active registered students recorded as "writing up".

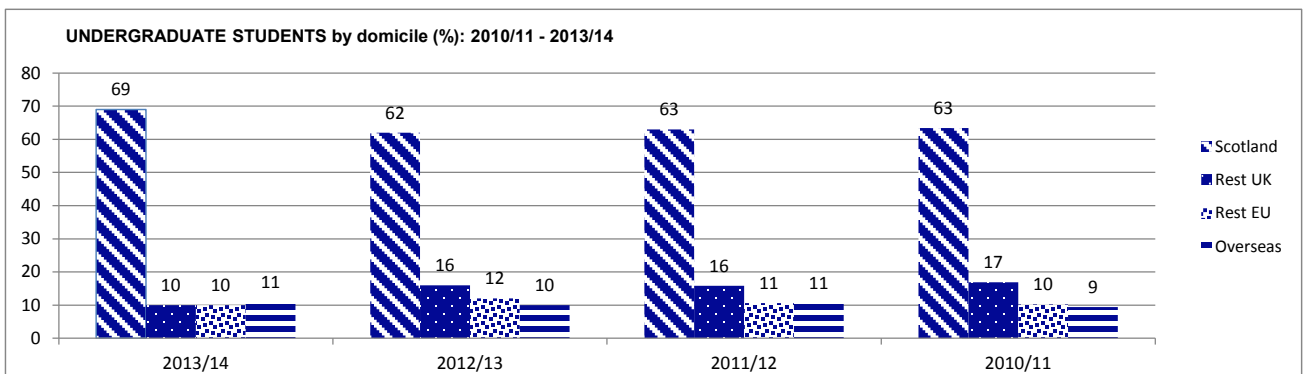
Excludes small numbers of registered incoming exchange, non-graduating and visiting scholars.

ALL STUDENTS by fees status (Scotland, Rest of UK, other EU, overseas)

2013/14						2012/13						2011/12					
	UG	PGT	PGR	Total	% change yr/yr		UG	PGT	PGR	Total	% change yr/yr		UG	PGT	PGR	Total	% change yr/yr
Total	6,273	1,382	724	8,379	6	Total	5,800	1,420	660	7,880	3	Total	5,638	1,471	561	7,670	2
SCO	4,319	252	225	4,796	20	SCO	3,587	261	155	4,003	~	SCO	4,424	365	89	4,878	-1
RUK	602	51	5	658	-37	RUK	912	61	70	1,043	~	RUK	643	306	204	1,153	22
EU	623	357	143	1,123	~	EU	665	330	124	1,119	-3	EU	571	800	268	1,639	1
OS	729	722	351	1,802	5	OS	636	768	311	1,715	5	OS	571	800	268	1,639	1

Refer to inclusions/exclusions listed above.

In 2012/13 the reporting methodology was changed to differentiate Scottish students and rest of the UK (RUK)



UNDERGRADUATE STUDENTS BY SCHOOL/PROGRAMME, ATTENDANCE LEVEL AND GENDER: 2011/12 - 2013/14
On-campus - Scotland

	2013/14				2012/13				2011/12						
	Gen	ft	pt	Total	%	Gen	ft	pt	Total	%	Gen	ft	pt	Total	%
UNIVERSITY TOTAL		6,129	144	6,273			5,706	94	5,800			5,551	87	5,638	
BUILT ENVIRONMENT		699	30	729	27		725	10	735	23		742	12	754	21
Architectural Engineering	F	41	2	43	42	F	31	1	31	29	F	24	1	24	24
	M	54	6	60	58	M	75	1	76	71	M	73	2	75	76
Total		95	8	103			106	1	107			97	2	99	
Civil Engineering	F	83	2	85	22	F	72	1	73	20	F	60	1	60	17
	M	296	9	305	78	M	288	4	292	80	M	277	6	283	83
Total		379	11	390			360	5	365			337	6	343	
Construction Management & Surveying	F	20	1	21	16	F	28	1	28	17	F	32	1	32	16
	M	108	6	114	84	M	133	1	134	83	M	165	2	167	84
Total		128	7	135			161	1	162			197	2	199	
Urban Studies	F	45	1	46	46	F	36	1	36	36	F	42	2	44	39
	M	52	3	55	54	M	62	3	65	64	M	69	6	75	61
Total		97	4	101			98	3	101			111	2	113	
ENGINEERING & PHYSICAL SCIENCES		1,532	75	1,607	25		1,450	39	1,489	22		1,339	38	1,377	20
Chemical Engineering	F	105	1	105	30	F	91	1	92	29	F	72	1	72	26
	M	245	3	248	70	M	218	7	225	71	M	205	4	209	74
Total		350	3	353			309	8	317			277	4	281	
Chemistry	F	117	1	118	46	F	114	1	115	48	F	99	1	99	44
	M	140	1	140	54	M	127	1	127	52	M	125	1	126	56
Total		257	1	258			241	1	242			224	1	225	
Combined Studies (BSc/BEng)	F	28	57	85	83	F	25	5	30	25	F	24	8	32	28
	M	7	10	17	17	M	65	23	88	75	M	61	23	84	72
Total		35	67	102			90	28	118			85	31	116	
Electrical, Electronic & Computer Engineering	F	19	1	20	9	F	10	1	10	5	F	12	1	12	7
	M	196	1	197	91	M	175	3	177	95	M	156	1	157	93
Total		215	2	217			185	3	188			168	1	169	
Mechanical Engineering	F	43	2	43	10	F	46	1	46	11	F	36	1	36	9
	M	403	2	405	90	M	391	1	392	89	M	381	1	381	91
Total		446	2	448			437	1	438			417	1	417	
Physics	F	37	1	37	16	F	33	1	34	18	F	27	1	27	16
	M	192	3	192	84	M	155	3	155	82	M	141	1	142	84
Total		229	2	229			188	1	189			168	1	169	
LIFE SCIENCES		818	20	838	64		638	21	659	63		671	8	679	59
Biology	F	217	10	227	53	F	182	7	189	57	F	184	1	185	54
	M	195	7	202	47	M	139	4	143	43	M	153	4	157	46
Total		412	17	429			321	11	332			337	5	342	
Psychology	F	303	1	304	77	F	204	3	207	74	F	175	2	177	76
	M	88	2	90	23	M	70	1	71	26	M	57	1	57	24
Total		391	3	394			274	4	278			232	2	234	
Sport & Exercise Science	F	8	1	8	53	F	19	3	22	45	F	35	1	36	35
	M	7	1	7	47	M	24	3	27	55	M	67	1	67	65
Total		15	1	15			43	6	49			102	1	103	
MANAGEMENT & LANGUAGES		1,636	12	1,648	50		1,506	19	1,525	50		1,441	21	1,462	51
Accountancy & Finance	F	168	1	169	42	F	147	1	148	42	F	144	2	146	40
	M	229	1	230	58	M	198	6	204	58	M	213	8	221	60
Total		397	2	399			345	7	352			357	10	367	
Combined Studies (BA)	F	12	1	12	41	F	18	1	19	40	F	22	1	22	56
	M	15	2	17	59	M	27	1	28	60	M	16	1	17	44
Total		27	2	29			45	2	47			38	1	39	
Economics	F	73	2	73	28	F	69	2	69	26	F	65	1	65	32
	M	185	2	187	72	M	191	2	193	74	M	138	1	139	68
Total		258	2	260			260	2	262			203	1	204	
Languages	F	291	2	293	78	F	259	4	263	79	F	247	1	248	77
	M	82	1	83	22	M	70	1	70	21	M	76	1	76	23
Total		373	3	376			329	4	333			323	1	324	
Management	F	250	1	251	48	F	225	1	226	49	F	219	3	222	50
	M	272	2	274	52	M	230	2	232	51	M	215	3	218	50
Total		522	3	525			455	3	458			434	6	440	
Management (Scottish Borders Campus)	F	21	1	21	50	F	28	1	28	47	F	33	1	33	43
	M	21	1	21	50	M	31	1	32	53	M	42	2	44	57
Total		42	1	42			59	1	60			75	2	77	
Foundation English/Interpreting Studies	F	10	1	10	59	F	5	1	5	38	F	5	1	5	45
	M	7	1	7	41	M	8	1	8	62	M	6	1	6	55
Total		17	1	17			13	1	13			11	1	11	
MATHEMATICAL & COMPUTER SCIENCES		883	6	889	33		804	4	808	34		807	5	812	34
Actuarial Mathematics & Statistics	F	123	1	123	37	F	115	1	115	38	F	103	1	103	36
	M	205	2	207	63	M	187	2	189	62	M	183	1	184	64
Total		328	2	330			302	2	304			286	1	287	
Computer Science	F	28	1	28	11	F	26	1	26	12	F	31	1	31	12
	M	222	1	222	89	M	193	1	194	88	M	218	1	219	88
Total		250	1	250			219	1	220			249	1	250	
Mathematics	F	141	1	142	46	F	135	1	135	48	F	140	1	140	51
	M	164	3	167	54	M	148	1	149	52	M	132	3	135	49
Total		305	4	309			283	1	284			272	3	275	
TEXTILES & DESIGN		561	1	562	93		583	1	584	94		551	3	554	94
Combined Studies	F	5	1	6	100	F	5	1	6	100	F	4	1	4	80
	M	1	1	1	100	M	1	1	1	100	M	1	1	1	20
Total		5	1	6			5	1	6			5	1	5	
Textiles & Design	F	518	1	518	93	F	542	1	542	94	F	514	3	517	94
	M	38	1	38	7	M	36	1	36	6	M	32	1	32	6
Total		556	1	556			578	1	578			546	3	549	

Percentage totals for Schools relate to the female population
 Note inclusions/exclusions detailed on page 5

UNDERGRADUATE STUDENTS BY SCHOOL/PG/PROGRAMME AND FEE TYPE: 2011/12 - 2013/14
On-campus - Scotland

SCHOOL/Programme	2013/14												2012/13												2011/12																			
	SCO				RUK				EU				OS				SCO				RUK				EU				OS				UK				EU				OS			
	ft	pt	Tot	Full Tot	ft	pt	Tot	Full Tot	ft	pt	Tot	Full Tot	ft	pt	Tot	Full Tot	ft	pt	Tot	Full Tot	ft	pt	Tot	Full Tot	ft	pt	Tot	Full Tot	ft	pt	Tot	Full Tot	ft	pt	Tot	Full Tot	ft	pt	Tot	Full Tot				
UNIVERSITY TOTAL	4,249	70	4,319	599	3	602	610	13	623	721	8	729	6,273	3,521	66	3,587	901	11	912	656	9	665	628	8	636	5,800	4,348	76	4,424	641	2	643	562	601	11	612	90	90	51	1	52	754		
BUILT ENVIRONMENT	535	22	557	38	1	39	74	5	79	52	2	54	729	481	4	485	107	2	109	85	3	88	52	1	53	735	601	11	612	90	90	51	1	52	754									
Architectural Engineering	52	5	57	8	1	9	20	15	2	17	103	65	1	66	7	7	16	16	18	18	18	18	18	18	107	72	1	73	11	11	14	1	15	99										
Civil Engineering	287	8	295	25	3	28	37	3	40	30	3	390	230	2	232	60	1	61	50	2	52	20	20	365	258	6	264	60	60	19	19	343												
Construction Management & Surveying	113	5	118	2	2	10	2	12	3	135	119	1	120	25	11	11	6	6	6	6	6	6	6	6	162	179	2	181	10	10	8	8	199											
Urban Studies	83	4	87	3	3	7	7	4	4	101	67	4	71	15	1	16	8	1	9	8	1	9	8	1	9	101	92	2	94	9	9	10	10	113										
ENGINEERING & PHYSICAL SCIENCES	1,151	20	1,171	128	1	129	154	4	158	149	149	1,607	955	28	983	214	7	221	164	2	166	117	2	119	1,489	1,065	37	1,102	155	155	119	1	120	1,377										
Chemical Engineering	249	3	252	26	21	47	21	54	21	54	54	353	199	4	203	58	3	61	22	22	30	1	31	317	228	4	232	15	15	34	34	281												
Chemistry	166	1	167	52	37	89	52	37	89	2	258	130	1	131	67	37	104	37	7	44	7	7	242	184	1	185	35	35	5	5	225													
Combined Studies (BSc/BEng)	57	13	70	6	1	7	13	3	16	9	102	53	22	75	19	3	22	11	2	13	7	1	8	118	70	30	100	9	9	6	1	7	116											
Electrical, Electronic & Computer Engineering	153	1	154	6	6	12	6	12	30	27	217	124	124	124	11	11	31	31	19	19	185	116	1	117	25	25	27	169																
Mechanical Engineering	340	2	342	22	22	44	22	30	30	54	448	326	1	327	25	25	38	38	48	48	438	339	339	339	37	37	41	41	417															
Physics	186	16	202	16	24	40	16	24	40	3	229	123	123	123	34	1	35	25	6	6	189	128	128	128	34	34	6	6	169															
LIFE SCIENCES	600	15	615	94	1	95	72	4	76	52	538	449	16	465	86	64	3	67	39	2	41	659	569	7	576	75	1	76	27	27	679													
Biology	306	13	319	35	1	36	41	3	44	30	429	229	6	235	31	31	40	3	43	21	2	23	332	270	4	274	49	49	50	50	18	342												
Psychology	279	2	281	59	59	118	59	59	118	22	394	182	4	186	51	51	23	23	18	18	18	18	278	198	2	200	25	25	9	9	234													
Sport & Exercise Science	15	15	30	15	15	30	15	15	30	15	15	38	6	44	4	4	1	1	1	1	1	1	1	49	101	1	102	1	1	1	1	103												
MANAGEMENT & LANGUAGES	987	8	995	203	203	406	178	268	4	272	1,648	792	16	808	250	1	251	207	1	208	257	1	258	1,525	1,012	13	1,025	220	220	209	7	216	1,462											
Accountancy & Finance	253	253	506	23	23	46	23	46	23	46	399	215	6	221	35	35	24	24	71	1	72	352	261	5	266	27	1	28	69	4	73	367												
Combined Studies (BA)	13	2	15	6	6	12	6	12	8	8	29	22	2	24	6	6	3	3	14	14	14	14	47	29	1	30	2	2	7	7	39													
Economics	119	1	120	60	60	120	29	50	1	51	260	85	1	86	72	72	45	1	46	58	58	262	125	1	126	46	46	32	204															
Languages	266	3	269	42	42	84	64	1	65	1	376	190	4	194	73	73	66	66	66	66	333	261	1	262	60	60	2	324																
Management	297	2	299	78	78	156	44	103	1	104	525	238	2	240	60	1	61	56	101	101	458	286	3	289	64	64	84	84	84	3	87	440												
Management (Scottish Borders Campus)	39	39	78	39	39	78	39	39	78	17	17	42	1	43	4	4	11	11	2	2	11	11	13	60	50	2	52	21	4	77	11													
Foundation English/Interpreting Studies																																												
MATHEMATICAL & COMPUTER SCIENCES	537	4	541	102	102	204	62	182	2	184	889	405	2	407	179	72	72	148	2	150	808	611	5	616	55	55	141	141	812															
Actuarial Mathematics & Statistics	140	140	280	39	39	78	11	138	2	140	330	110	110	110	65	65	18	18	109	2	111	304	177	1	178	10	10	99	287															
Computer Science	196	196	392	6	6	12	6	12	33	15	250	158	1	159	14	14	35	35	12	12	220	202	1	203	29	29	18	250																
Mathematics	201	4	205	57	57	114	18	29	29	309	137	1	138	100	100	19	19	27	27	284	232	3	235	16	16	24	275																	
TEXTILES & DESIGN	439	1	440	34	34	68	70	18	18	562	439	439	878	65	65	64	64	15	15	584	15	15	584	439	439	878	65	65	64	64	15	584												
Combined Studies	3	1	4	4	4	8	2	2	2	6	6	4	4	8	1	1	1	1	1	1	1	1	6	6	6	3	2	2	2	2	5													
Textiles & Design	436	436	872	34	34	68	68	18	18	556	435	435	870	65	65	63	63	15	15	578	15	15	578	487	487	974	44	44	15	15	549													

Note inclusions/exclusions detailed on page 5
In 2012/13 the reporting methodology was changed to differentiate Scottish students and rest of the UK

UNDERGRADUATE FRESHER STUDENTS BY GENDER: 2011/12 - 2013/14
On-campus - Scotland

	2013/14		2012/13		2011/12				
	Gend	%	Gend	%	Gend	%			
UNIVERSITY TOTAL		2,131	45	1,775	45	1,832	46		
BUILT ENVIRONMENT		196	27	217	26	228	26		
Architectural Engineering	F	18	53	F	13	35	F	11	34
	M	16	47	M	24	65	M	21	66
Total		34		37		32		32	
Civil Engineering	F	18	17	F	28	23	F	22	22
	M	87	83	M	94	77	M	80	78
Total		105		122		102		102	
Construction Management & Surveying	F	5	14	F	9	25	F	11	19
	M	30	86	M	27	75	M	48	81
Total		35		36		59		59	
Urban Studies	F	12	55	F	6	27	F	16	46
	M	10	45	M	16	73	M	19	54
Total		22		22		35		35	
ENGINEERING & PHYSICAL SCIENCES		491	24	480	25	451	22		
Chemical Engineering	F	32	30	F	31	32	F	31	32
	M	76	70	M	65	68	M	66	68
Total		108		96		97		97	
Chemistry	F	37	41	F	48	51	F	36	45
	M	53	59	M	47	49	M	44	55
Total		90		95		80		80	
Combined Studies (BSc/BEng)	F	13	43	F	6	24	F	6	23
	M	17	57	M	19	76	M	20	77
Total		30		25		26		26	
Electrical, Electronic & Computer Engineering	F	12	18	F	3	4	F	4	6
	M	56	82	M	66	96	M	61	94
Total		68		69		65		65	
Mechanical Engineering	F	11	11	F	14	12	F	11	9
	M	93	89	M	104	88	M	106	91
Total		104		118		117		117	
Physics	F	14	15	F	16	21	F	11	17
	M	77	85	M	61	79	M	55	83
Total		91		77		66		66	
LIFE SCIENCES		361	61	151	68	242	64		
Biology	F	83	48	F	46	61	F	79	55
	M	91	52	M	30	39	M	64	45
Total		174		76		143		143	
Psychology	F	137	73	F	57	76	F	77	78
	M	50	27	M	18	24	M	22	22
Total		187		75		99		99	
MANAGEMENT & LANGUAGES		585	51	478	49	509	51		
Accountancy & Finance	F	70	51	F	42	45	F	49	43
	M	66	49	M	52	55	M	64	57
Total		136		94		113		113	
Combined Studies (BA)	F			F			F		
	M	1	100	M			M		
Total		1							
Economics	F	23	28	F	17	20	F	25	34
	M	60	72	M	70	80	M	48	66
Total		83		87		73		73	
Languages	F	101	77	F	80	81	F	89	73
	M	31	23	M	19	19	M	33	27
Total		132		99		122		122	
Management	F	87	44	F	80	49	F	75	47
	M	113	57	M	83	51	M	83	53
Total		200		163		158		158	
Management (Scottish Borders Campus)	F	8	50	F	12	55	F	17	53
	M	8	50	M	10	45	M	15	47
Total		16		22		32		32	
Foundation English/Interpreting Studies	F	10	59	F	5		F	5	45
	M	7	41	M	8		M	6	55
Total		17		13		11		11	
MATHEMATICAL & COMPUTER SCIENCES		317	34	253	38	206	37		
Actuarial Mathematics & Statistics	F	52	41	F	48	44	F	32	38
	M	74	59	M	60	56	M	53	62
Total		126		108		85		85	
Computer Science	F	9	10	F	5	10	F	11	18
	M	83	90	M	45	90	M	49	82
Total		92		50		60		60	
Mathematics	F	47	47	F	43	45	F	33	54
	M	52	53	M	52	55	M	28	46
Total		99		95		61		61	
TEXTILES & DESIGN		181	91	196	93	196	94		
Textiles & Design	F	165	91	F	183	93	F	185	94
	M	16	9	M	13	7	M	11	6

Percentage totals for Schools relate to the female population
 Note inclusions/exclusions detailed on page 5

POSTGRADUATE TAUGHT COURSE STUDENTS BY SCHOOL/PROGRAMME, ATTENDANCE LEVEL AND GENDER 2011/12 - 2013/14

On-campus - Scotland

	2013/14				2012/13				2011/12						
	Gen	ft	pt	Total	%	Gen	ft	pt	Total	%	Gen	ft	pt	Total	%
UNIVERSITY TOTAL		1,288	94	1,382			1,308	112	1,420			1,345	126	1,471	
BUILT ENVIRONMENT		181	25	206	28		189	54	243	31		168	84	252	40
Architectural Engineering	F	10	1	11	39	F	9	1	10	40	F	6		6	25
	M	15	2	17	61	M	9	6	15	60	M	13	5	18	75
Total		25	3	28			18	7	25			19	5	24	
Built Environment General	F					F					F	1		1	100
	M					M					M				
Total												1		1	
Civil Engineering	F	7	2	9	14	F	12	1	13	18	F	6	1	7	14
	M	54	1	55	86	M	53	8	61	82	M	36	8	44	86
Total		61	3	64			65	9	74			42	9	51	
Construction Management & Surveying	F	13	4	17	28	F	14	2	16	28	F	15	3	18	23
	M	38	5	43	72	M	32	9	41	72	M	47	15	62	78
Total		51	9	60			46	11	57			62	18	80	
Urban Studies	F	17	3	20	37	F	23	14	37	43	F	27	41	68	71
	M	27	7	34	63	M	37	13	50	57	M	17	11	28	29
Total		44	10	54			60	27	87			44	52	96	
ENGINEERING & PHYSICAL SCIENCES		142	5	147	24		159	2	161	19		162	3	165	19
Chemical Engineering	F	4		4	27	F	3		3	27	F	3		3	38
	M	11		11	73	M	8		8	73	M	5		5	62
Total		15		15			11		11			8		8	
Chemistry	F	3		3	50	F	7		7	41	F	5		5	45
	M	3		3	50	M	10		10	59	M	6		6	55
Total		6		6			17		17			11		11	
Electrical, Electronic & Computer Engineering	F	14		14	24	F	7		7	12	F	8		8	19
	M	44		44	76	M	52		52	88	M	35		35	81
Total		58		58			59		59			43		43	
Mechanical Engineering	F	12		12	19	F	11		11	17	F	14		14	15
	M	45	5	50	81	M	52	2	54	83	M	77	3	80	85
Total		57	5	62			63	2	65			91	3	94	
Physics	F	2		2	33	F	3		3	33	F	2		2	22
	M	4		4	67	M	6		6	67	M	7		7	78
Total		6		6			9		9			9		9	
LIFE SCIENCES		131	10	141	39		118	7	125	47		120	5	125	46
Biology	F	28	5	33	30	F	41	3	44	47	F	31	2	33	39
	M	75	1	76	70	M	49	1	50	53	M	52		52	61
Total		103	6	109			90	4	94			83	2	85	
Psychology	F	19	3	22	69	F	14	1	15	48	F	23	2	25	63
	M	9	1	10	31	M	14	2	16	52	M	14	1	15	38
Total		28	4	32			28	3	31			37	3	40	
MANAGEMENT & LANGUAGES		393	26	419	55		457	22	479	55		415	9	424	55
Accountancy & Finance	F	39	2	41	48	F	58	3	61	49	F	43		43	46
	M	44		44	52	M	63		63	51	M	49	1	50	54
Total		83	2	85			121	3	124			92	1	93	
Languages	F	35	5	40	78	F	52	2	54	71	F	37		37	71
	M	10	1	11	22	M	21	1	22	29	M	15		15	29
Total		45	6	51			73	3	76			52		52	
Management	F	146	5	151	53	F	141	6	147	53	F	148	5	153	55
	M	119	13	132	47	M	122	10	132	47	M	123	3	126	45
Total		265	18	283			263	16	279			271	8	279	
MATHEMATICAL & COMPUTER SCIENCES		188	9	197	39		172	7	179	38		250	7	257	40
Actuarial Mathematics & Statistics	F	46		46	41	F	40	1	41	42	F	81	1	82	50
	M	65	1	66	59	M	56	1	57	58	M	83		83	50
Total		111	1	112			96	2	98			164	1	165	
Computer Science	F	15	2	17	31	F	17	1	18	35	F	12		12	19
	M	32	6	38	69	M	32	1	33	65	M	47	3	50	81
Total		47	8	55			49	2	51			59	3	62	
Mathematics	F	14		14	47	F	8	1	9	30	F	8	2	10	33
	M	16		16	53	M	19	2	21	70	M	19	1	20	67
Total		30		30			27	3	30			27	3	30	
TEXTILES & DESIGN		14		14	93		27		27	81		22		22	82
Textiles & Design	F	13		13	93	F	22		22	81	F	18		18	82
	M	1		1	7	M	5		5	19	M	4		4	18
PETROLEUM ENGINEERING		227	1	228	26		174		174	20		195		195	25
Petroleum Engineering	F	59	1	60	26	F	34		34	20	F	49		49	25
	M	168		168	74	M	140		140	80	M	146		146	75
EDINBURGH BUSINESS SCHOOL		12	18	30	30		12	20	32	56		13	18	31	52
Edinburgh Business School	F	2	7	9	30	F	7	11	18	56	F	7	9	16	52
	M	10	11	21	70	M	5	9	14	44	M	6	9	15	48

Percentage totals for Schools/Institutes relate to the female population
 Note inclusions/exclusions detailed on page 5

POSTGRADUATE TAUGHT COURSE STUDENTS BY SCHOOL/PG/PROGRAMME AND FEE TYPE 2011/12 - 2013/14
On-campus - Scotland

SCHOOL/Programme	2013/14						2012/13						2011/12																								
	SCO		UK		EU		OS		UK		EU		OS		UK		EU		OS																		
	ft	pt	ft	pt	ft	pt	ft	pt	ft	pt	ft	pt	ft	pt	ft	pt	ft	pt	ft	pt																	
UNIVERSITY TOTAL	192	60	252	47	4	51	335	22	357	714	8	722	1,382	176	85	261	55	6	61	313	17	330	764	4	768	1,420	284	81	365	293	13	306	792	8	800	1,471	
BUILT ENVIRONMENT	44	18	62	4	2	6	43	5	48	90	206	31	47	78	6	6	39	6	45	113	1	114	243	50	53	103	30	3	33	112	4	116	252				
Architectural Engineering	10	2	12			2	1	3	13	28		2	6	8		7	1	8	9		9	25		5	5	10	5		5	9	9	24		1	1		
Built Environment General	14	3	17	1		1	21	21	25	64		11	8	19	1	22	1	23	31		31	74		12	7	19	12	2	14	18	18	18	51				
Civil Engineering	8	8	16	1		1	10	1	32	60		7	11	18	1	3	3	35		35	57		9	15	24	8		8	45	3	48	80					
Construction Management & Surveying	12	5	17	2		2	4	10	3	54		11	22	33	4	4	7	4	11		38	1	39	87	24	26	50	5	1	6	39	1	40	96			
Urban Studies	17	4	21	3		3	61	1	62	61	147	28	2	30	6	6	54	54	71		161		40	2	42	52	1	53	70	70	165						
ENGINEERING & PHYSICAL SCIENCES	5	5	1	1		5	5	4	15	4	15	4	4	4	1	1	1	5	11		11		1	1	5	5		5	2	2	8						
Chemical Engineering	2	2				3	3	3	6	6		5	5	5		5	5	7		7	17		7	17		8	8		8	3	3	11					
Electrical, Electronic & Computer Engineering	8	4	12	2		2	33	1	34	14	62	7	2	9	2	2	13	34		34	59		5	5	10	10	28	28	43	43							
Mechanical Engineering	2	2				2	2	2	2	2	6	2	2	2	1	4	4	2	4		2	23		23	65	23	2	25	34	1	35	34	34	94			
Physics	36	7	43	16		16	25	3	28	54	141	31	4	35	11	12	20	21	56		1	57	125	49	4	53	10	11	61	61	125						
LIFE SCIENCES	29	3	32	13		13	18	3	21	43	109	6	2	8	1	6	6	16	16		16	31		37	1	38	7	1	8	39	39	85					
Biology	7	4	11	3		3	7	7	11	32		25	2	27	11	11	14	15	40		41	94		12	3	15	3	3	22	22	40						
Psychology	26	14	40	3		3	120	9	129	244	3	247	419	32	13	45	13	14	136		284	479		59	3	62	142	5	147	214	1	215	424				
MANAGEMENT & LANGUAGES	7	1	8			22	1	23	54	85		6	2	8	3	35	1	36	77		77	124		16	1	17	28	28	48	48	93						
Accountancy & Finance	3	3	6	2		2	19	2	21	21	51	9	2	11	4	5	24	24	36		36	76		15	15	21	21	16	16	52							
Languages	16	10	26	1		1	79	6	85	169	2	171	283	17	9	26	6	69	76		171	279		28	2	30	93	5	98	150	1	151	279				
Management	30	5	35	8		8	37	3	40	113	197	17	6	23	8	8	32	1	33		115	179		28	4	32	33	2	35	189	1	190	257				
MATHEMATICAL & COMPUTER SCIENCES	11	1	12	7		7	17	17	76	112		9	1	10	6	6	11	12	70		70	98		6	6	15	1	16	143	143	165						
Actuarial Mathematics & Statistics	10	4	14	1		1	12	3	15	24	55	4	2	6	2	13	13	32		32	51		7	1	8	14	1	15	38	1	39	62					
Computer Science	9		9			8	8	8	13	30		4	3	7	2	2	8	8	13		13	30		15	3	18	4	4	8	8	8	30					
Mathematics	2	2				4	4	4	8	14		6	6	6		4	4	17		17	27		10	10	2	2	10	2	10	22							
TEXTILES & DESIGN	34	34	13	13		13	44	44	136	1	137	228	29	29	10	10	35	35	100		100	174		46	46	23	23	126	126	195							
PETROLEUM ENGINEERING	3	12	15	2		2	1	1	2	8	30	2	13	15	1	4	5	1	2		8	32		2	15	17	1	1	2	10	2	12	31				
EDINBURGH BUSINESS SCHOOL																																					

Note: Inclusions/exclusions detailed on page 5
In 2012/13 the reporting methodology was changed to differentiate Scottish students and rest of the UK

POSTGRADUATE TAUGHT COURSE FRESHER STUDENTS BY GENDER 2011/12 - 2013/14

On-campus - Scotland

	2013/14			2012/13			2011/12		
	Gend	Total	%	Gend	Total	%	Gend	Total	%
UNIVERSITY TOTAL		1,264	38		1,279	41		1,314	41
BUILT ENVIRONMENT		189	29		185	30		189	30
Architectural Engineering	F	10	38	F	9	43	F	5	26
	M	16	62	M	12	57	M	14	74
Total		26			21			19	
Civil Engineering	F	8	13	F	12	20	F	5	14
	M	53	87	M	47	80	M	32	86
Total		61			59			37	
Construction Management & Surveying	F	17	30	F	13	26	F	14	24
	M	39	70	M	37	74	M	44	76
Total		56			50			58	
Urban Studies	F	19	41	F	21	38	F	33	44
	M	27	59	M	34	62	M	42	56
Total		46			55			75	
ENGINEERING & PHYSICAL SCIENCES		124	23		136	19		139	20
Chemical Engineering	F	4	31	F	3	27	F	3	38
	M	9	69	M	8	73	M	5	62
Total		13			11			8	
Chemistry	F	3	60	F	5	38	F	4	40
	M	2	40	M	8	62	M	6	60
Total		5			13			10	
Electrical, Electronic & Computer Engineering	F	9	22	F	4	10	F	5	19
	M	32	78	M	36	90	M	21	81
Total		41			40			26	
Mechanical Engineering	F	11	19	F	11	17	F	14	16
	M	48	81	M	52	83	M	73	84
Total		59			63			87	
Physics	F	2	33	F	3	33	F	2	25
	M	4	67	M	6	67	M	6	75
Total		6			9			8	
LIFE SCIENCES		138	38		119	46		123	46
Biology	F	31	29	F	42	46	F	32	38
	M	76	71	M	49	54	M	52	62
Total		107			91			84	
Psychology	F	21	68	F	13	46	F	24	62
	M	10	32	M	15	54	M	15	38
Total		31			28			39	
MANAGEMENT & LANGUAGES		377	55		453	55		392	55
Accountancy & Finance	F	39	48	F	59	48	F	43	47
	M	43	52	M	63	52	M	49	53
Total		82			122			92	
Languages	F	36	78	F	52	73	F	36	71
	M	10	22	M	19	27	M	15	29
Total		46			71			51	
Management	F	131	53	F	140	54	F	135	54
	M	118	47	M	120	46	M	114	46
Total		249			260			249	
MATHEMATICAL & COMPUTER SCIENCES		179	39		169	38		238	42
Actuarial Mathematics & Statistics	F	43	43	F	40	42	F	82	50
	M	58	57	M	56	58	M	82	50
Total		101			96			164	
Computer Science	F	15	30	F	17	36	F	8	17
	M	35	70	M	30	64	M	39	83
Total		50			47			47	
Mathematics	F	12	43	F	8	31	F	9	33
	M	16	57	M	18	69	M	18	67
Total		28			26			27	
TEXTILES & DESIGN		14	93		27	81		22	82
Textiles & Design	F	13	93	F	22	81	F	18	82
	M	1	7	M	5	19	M	4	18
PETROLEUM ENGINEERING		226	26		171	19		192	26
Petroleum Engineering	F	58	26	F	33	19	F	49	26
	M	168	74	M	138	81	M	143	74
EDINBURGH BUSINESS SCHOOL		17	24		19	63		19	63
Edinburgh Business School	F	4	24	F	12	63	F	12	63
	M	13	76	M	7	37	M	7	37

Percentage totals for Schools/Institutes relate to the female population
Note inclusions/exclusions detailed on page 5

POSTGRADUATE RESEARCH STUDENTS BY SCHOOL/PROGRAMME, ATTENDANCE LEVEL AND GENDER: 2011/12 - 2013/14

On-campus - Scotland

	2013/14				2012/13				2011/12						
	Gend	ft	pt	Total %	Gend	ft	pt	Total %	Gend	ft	pt	Total %			
UNIVERSITY TOTAL		663	61	724		608	52	660		516	45	561			
BUILT ENVIRONMENT		118	21	139	30		89	14	103	33		83	13	96	31
Architectural Engineering	F								F	1				100	
	M								M						
Total										1				1	
Civil Engineering	F	9	3	12	36	F	10	2	12	46	F	8	2	10	34
	M	20	1	21	64	M	14		14	54	M	18	1	19	66
Total		29	4	33			24	2	26			26	3	29	
Construction Management & Surveying	F	11	2	13	20	F	8	3	11	22	F	7	3	10	24
	M	42	9	51	80	M	33	5	38	78	M	26	5	31	76
Total		53	11	64			41	8	49			33	8	41	
Urban Studies	F	15	2	17	40	F	10	1	11	39	F	10		10	40
	M	21	4	25	60	M	14	3	17	61	M	13	2	15	60
Total		36	6	42			24	4	28			23	2	25	
ENGINEERING & PHYSICAL SCIENCES		241	7	248	25		240	7	247	24		214	6	220	23
Chemical Engineering	F	10		10	42	F	11		11	55	F	9		9	60
	M	14		14	58	M	9		9	45	M	6		6	40
Total		24		24			20		20			15		15	
Chemistry	F	13		13	46	F	14		14	44	F	11		11	37
	M	15		15	54	M	18		18	56	M	19		19	63
Total		28		28			32		32			30		30	
Electrical, Electronic & Computer Engineering	F	9	1	10	26	F	8	1	9	21	F	6	1	7	20
	M	25	3	28	74	M	31	2	33	79	M	26	2	28	80
Total		34	4	38			39	3	42			32	3	35	
Mechanical Engineering	F	8	1	9	18	F	9	1	10	22	F	8		8	18
	M	39	1	40	82	M	35	1	36	78	M	35	1	36	82
Total		47	2	49			44	2	46			43	1	44	
Physics	F	20		20	18	F	16		16	15	F	16		16	17
	M	88	1	89	82	M	89	2	91	85	M	78	2	80	83
Total		108	1	109			105	2	107			94	2	96	
LIFE SCIENCES		53	5	58	57		49	2	51	50		50	4	54	46
Biology	F	17	1	18	55	F	19		19	49	F	19		19	44
	M	14	1	15	45	M	18	2	20	51	M	21	3	24	56
Total		31	2	33			37	2	39			40	3	43	
Life Sciences	F	8		8	53	F	3		3	38	F	1		1	25
	M	6	1	7	47	M	5	5	63	M	2	1	3	75	
Total		14	1	15			8		8			3	1	4	
Psychology	F	4	2	6	67	F	2	2	67	F	3		3	60	
	M	3		3	33	M	1	1	33	M	2		2	40	
Total		7	2	9			3		3			5		5	
Sport & Exercise Science	F				100	F				100	F				100
	M	1		1		M	1		1		M	2		2	
Total		1		1			1		1			2		2	
MANAGEMENT & LANGUAGES		69	7	76	49		50	9	59	39		33	9	42	38
Accountancy & Finance	F	5	1	6	33	F	3	1	4	31	F	2	1	3	33
	M	11	1	12	67	M	9		9	69	M	6		6	67
Total		16	2	18			12	1	13			8	1	9	
Economics	F	4		4	31	F	4		4	31	F	2		2	25
	M	9		9	69	M	8	1	9	69	M	6		6	75
Total		13		13			12	1	13			8		8	
Languages	F	14	1	15	79	F	7	2	9	60	F	4	2	6	55
	M	2	2	4	21	M	4	2	6	40	M	3	2	5	45
Total		16	3	19			11	4	15			7	4	11	
Management	F	11	1	12	46	F	5	1	6	33	F	4	1	5	36
	M	13	1	14	54	M	10	2	12	67	M	6	3	9	64
Total		24	2	26			15	3	18			10	4	14	
MATHEMATICAL & COMPUTER SCIENCES		88	6	94	30		92	9	101	27		65	8	73	30
Actuarial Mathematics & Statistics	F	5		5	26	F	3		3	21	F	1		1	20
	M	12	2	14	74	M	10	1	11	79	M	3	1	4	80
Total		17	2	19			13	1	14			4	1	5	
Computer Science	F	9	1	10	24	F	11	1	12	23	F	10		10	24
	M	29	2	31	76	M	34	6	40	77	M	25	6	31	76
Total		38	3	41			45	7	52			35	6	41	
Mathematics	F	12	1	13	38	F	11	1	12	34	F	10	1	11	41
	M	21		21	62	M	23		23	66	M	16		16	59
Total		33	1	34			34	1	35			26	1	27	
TEXTILES & DESIGN		13	1	14	50		12	12	42		12	1	13	46	
Textiles & Design	F	6	1	7	50	F	5		5	42	F	6		6	46
	M	7		7	50	M	7		7	58	M	6	1	7	54
PETROLEUM ENGINEERING		81	14	95	19		76	11	87	22		59	4	63	22
Petroleum Engineering	F	15	3	18	19	F	17	2	19	22	F	13	1	14	22
	M	66	11	77	81	M	59	9	68	78	M	46	3	49	78

Percentage totals for Schools/Institutes relate to the female population
 Note inclusions/exclusions detailed on page 5

POSTGRADUATE RESEARCH STUDENTS BY SCHOOL/PG/PROGRAMME AND FEE TYPE: 2011/12 - 2013/14
On-campus - Scotland

SCHOOL/Programme	2013/14										2012/13										2011/12															
	SCO		RUK		EU		OS		FullTot		SCO		RUK		EU		OS		FullTot		UK		EU		OS		FullTot									
	ft	pt	ft	pt	ft	pt	ft	pt	ft	pt	ft	pt	ft	pt	ft	pt	ft	pt	ft	pt	ft	pt	ft	pt	ft	pt	ft	pt								
UNIVERSITY TOTAL	200	25	225	5	129	14	143	329	22	351	724	136	19	155	65	5	70	113	11	124	294	17	311	660	182	22	204	79	10	89	255	13	268	561		
BUILT ENVIRONMENT	27	8	35	2	2	7	3	10	82	10	92	139	17	5	22	7	1	8	7	7	58	8	66	103	20	6	26	2	2	61	7	68	96			
Architectural Eng																																				
Civil Engineering	7	2	9		1	1	2	21	1	22	33	5	1	6	4	1	5	1	1	14		14	26	8	2	10			1	1	1	1	1	1		
Construction Management & Surveying	10	3	13	1	1	5	5	37	8	45	64	8	1	9	1	1	4	4	4	28	7	35	49	7	3	10	1	1	25	5	30	41				
Urban Studies	10	3	13	1	1	1	2	3	24	1	25	42	4	3	7	2	2	2	16	1	17	28	5	1	6	1	1	17	1	18	25					
ENGINEERING & PHYSICAL SCIENCES	98	2	100	1	1	67	4	71	75	1	76	248	66	2	68	40	40	67	3	70	67	2	69	247	101	2	103	53	3	56	60	1	61	220		
Chemical Engineering	8	8	17	1	1	5	5	10	10	10	24	4	4	3	3	5	5	8	8	8	8	20	6	6	6	2	2	7	7	15						
Chemistry	17	17			6	6	6	5	5	28	8	14	14	4	11	11	3	3	3	3	3	32	17	17	17	7	7	6	6	30						
Electrical, Electronic & Computer Engineering	8	8			10	3	13	16	1	17	38	8	8	1	1	10	2	12	20	1	21	42	8	1	9	8	2	10	16	16	35					
Mechanical Engineering	13	1	14		12	1	13	22	22	49	12	1	13	4	4	9	1	10	19	1	19	46	17	17	17	11	1	12	15	15	44					
Physics	52	1	53		34	34	22	22	109	28	109	28	1	29	28	32	17	1	18	32	17	1	18	107	53	1	54	25	25	16	1	17	96			
LIFE SCIENCES	23	4	27	1	1	10	10	19	1	20	58	14	1	15	6	1	7	1	1	28		28	51	20	3	23	1	1	29	1	30	54				
Biology	12	1	13	1	1	2	2	16	1	17	33	9	1	10	3	1	4	1	1	24		24	39	15	2	17	1	1	24	1	25	43				
Life Sciences	6	1	7		7	7	1	1	1	15	3	3	3	3	3	3	3	3	2	2	2	8	2	8	2	1	3	1	1	1	4					
Psychology	5	2	7		1	1	1	1	1	9	2	2	2	2	2	2	2	2	1	1	1	3	1	3	2	2	2	3	3	5						
Sport & Exercise Science																																				
MANAGEMENT & LANGUAGES	18	3	21		19	2	21	32	2	34	76	11	2	13	1	1	16	4	20	23	2	25	59	7	4	11	8	4	12	18	1	19	42			
Accountancy & Finance	2	1	3		1	1	1	13	1	14	18	2	1	3	3	1	1	9	9	9	13	2	13	2	1	3	1	1	5	5	9					
Economics	2	2	4		6	6	5	5	5	13	3	3	3	3	3	3	3	4	5	1	6	13	2	2	2	1	1	5	5	8						
Languages	4	2	6		4	1	5	8	8	19	1	1	2	1	1	1	1	2	6	6	6	15	6	6	6	2	2	3	2	5	4	4	11			
Management	10	10			8	1	9	6	1	7	26	5	5	5	5	7	2	9	3	1	4	18	3	1	4	3	2	5	4	1	5	14				
MATHEMATICAL & COMPUTER SCIENCES	23	3	26	1	1	18	3	21	46	46	94	20	5	25	7	1	8	18	2	20	47	1	48	101	24	5	29	11	2	13	30	1	31	73		
Actuarial Mathematics & Statistics	3	1	4		3	1	4	11	11	19	2	1	3	1	1	2	2	8	8	8	14	2	1	3	1	3	1	1	1	1	1	5				
Computer Science	10	1	11		9	2	11	19	19	41	13	3	16	1	1	9	2	11	23	1	24	52	10	3	13	6	2	8	19	1	20	41				
Mathematics	10	1	11	1	1	6	6	16	16	34	5	1	6	6	6	7	7	16	16	16	35	12	1	13	4	4	10	10	27							
TEXTILES & DESIGN	2	1	3									2	2	2	1	1	1	1	1	8	8	12	3	1	4	3	1	4	9	9	13					
PETROLEUM ENGINEERING	9	4	13		8	2	10	64	8	72	95	6	4	10	4	1	5	3	2	5	63	4	67	87	7	1	8	4	1	5	48	2	50	63		

Note inclusions/exclusions detailed on page 5
 In 2012/13 the reporting methodology was changed to differentiate Scottish students and rest of the UK

POSTGRADUATE RESEARCH FRESHER STUDENTS BY GENDER: 2011/12 - 2013/14

On-campus - Scotland

	2013/14			2012/13			2011/12		
	Gend	Total	%	Gend	Total	%	Gend	Total	%
UNIVERSITY TOTAL		156	39		143	31		129	29
BUILT ENVIRONMENT		23	39		19	58		19	26
Civil Engineering	F	3	38	F	3	75	F	2	50
	M	5	62	M	1	25	M	2	50
Total		8			4			4	
Construction Management & Surveying	F	2	29	F	5	50	F	2	18
	M	5	71	M	5	50	M	9	82
Total		7			10			11	
Urban Studies	F	4	50	F	3	60	F	1	25
	M	4	50	M	2	40	M	3	75
Total		8			5			4	
ENGINEERING & PHYSICAL SCIENCES		55	22		58	28		48	21
Chemical Engineering	F	2	29	F	5	50	F	5	71
	M	5	71	M	5	50	M	2	29
Total		7			10			7	
Chemistry	F	2	29	F	6	55	F	1	17
	M	5	71	M	5	45	M	5	83
Total		7			11			6	
Electrical, Electronic & Computer Engineering	F	1	14	F	2	20	F	1	25
	M	6	86	M	8	80	M	3	75
Total		7			10			4	
Mechanical Engineering	F	3	38	F			F	1	7
	M	5	62	M	4	100	M	13	93
Total		8			4			14	
Physics	F	4	15	F	3	13	F	2	12
	M	22	85	M	20	87	M	15	88
Total		26			23			17	
LIFE SCIENCES		12	92		5	40		13	38
Biology	F	5	83	F			F	5	42
	M	1	17	M	1	100	M	7	58
Total		6			1			12	
Life Sciences	F	3	100	F	2	50	F		
	M			M	2	50	M	1	100
Total		3			4			1	
Psychology	F	3	100	F			F		
	M			M			M		
Total		3							
MANAGEMENT & LANGUAGES		28	68		23	43		15	27
Accountancy & Finance	F	2	40	F	1	25	F		
	M	3	60	M	3	75	M	4	100
Total		5			4			4	
Economics	F	3	43	F	2	40	F	1	25
	M	4	57	M	3	60	M	3	75
Total		7			5			4	
Languages	F	9	100	F	5	83	F	1	33
	M			M	1	17	M	2	67
Total		9			6			3	
Management	F	5	71	F	2	25	F	2	50
	M	2	29	M	6	75	M	2	50
Total		7			8			4	
MATHEMATICAL & COMPUTER SCIENCES		21	33		22	9		21	43
Actuarial Mathematics & Statistics	F	1	20	F	1	14	F	1	33
	M	4	80	M	6	86	M	2	67
Total		5			7			3	
Computer Science	F	4	44	F			F	5	38
	M	5	56	M	8	100	M	8	62
Total		9			8			13	
Mathematics	F	2	29	F	1	14	F	3	60
	M	5	71	M	6	86	M	2	40
Total		7			7			5	
TEXTILES & DESIGN		3	33		1	100		3	67
Textiles & Design	F	1	33	F	1	100	F	2	67
	M	2	67	M			M	1	33
PETROLEUM ENGINEERING		14	14		15	13		10	30
Petroleum Engineering	F	2	14	F	2	13	F	3	30
	M	12	86	M	13	87	M	7	70

Percentage totals for Schools/Institutes relate to the female population

Note inclusions/exclusions detailed on page 5

Sport & Exercise Science was closed to new entrants after 2010/11

UNDERGRADUATE STUDENTS BY SCHOOL/PROGRAMME, ATTENDANCE LEVEL AND GENDER: 2010/11 - 2013/14
On-campus - Dubai

SCHOOL/Programme	2013/14					2012/13					2011/12					2010/11					
	Gend	ft	pt	Total	%	Gend	ft	pt	Total	%	Gend	ft	pt	Total	%	Gend	ft	pt	Total	%	
UNIVERSITY TOTAL		2,371	10	2,381		2,153	28	2,181		1,557	14	1,571		1,071	27	1,098					
BUILT ENVIRONMENT		207	4	211		171	26	197		107	14	121		50	26	76					
Architectural Engineering	F	55		55	70	F	37		37	69	F	13		13	57						
	M	23	1	24	30	M	15	2	17	31	M	10		10	43						
		78	1	79			52	2	54			23		23							
Civil Engineering	F	20		20	17	F	23		23	20	F	16		16	19	F	10		10	21	
	M	98	1	99	83	M	85	5	90	80	M	66	2	68	81	M	38		38	79	
		118	1	119			108	5	113			82	2	84			48		48		
Construction Management & Surveying	F	1	1	2	15	F		2	2	7	F					F		2	2	7	
	M	10	1	11	85	M	11	17	28	93	M	2	12	14	100	M	2	24	26	93	
		11	2	13			11	19	30			2	12	14			2	26	28		
ENGINEERING & PHYSICAL SCIENCES		643		643		616		616		461		461		323	1	324					
Combined Studies (EPS)	F					F					F										
	M	47		47	100	M	31		31	100	M	4		4	100						
		47		47			31		31			4		4							
Degree Entry Prog in Engineering	F	23		23	17	F	16		16	12	F	18		18	17	F	8		8	11	
	M	109		109	83	M	121		121	88	M	91		91	83	M	62		62	89	
		132		132			137		137			109		109			70		70		
Electrical, Electronic & Computer Eng	F	35		35	23	F	28		28	20	F	22		22	19	F	16		16	19	
	M	115		115	77	M	113		113	80	M	93		93	81	M	68		68	81	
		150		150			141		141			115		115			84		84		
Mechanical Engineering	F	28		28	9	F	24		24	8	F	26		26	11	F	18		18	11	
	M	286		286	91	M	283		283	92	M	207		207	89	M	151	1	152	89	
		314		314			307		307			233		233			169	1	170		
LIFE SCIENCES		101		101		54		54		15		15		80		80					
Psychology	F	86		86	85	F	43		43	80	F	9		9	60						
	M	15		15	15	M	11		11	20	M	6		6	40						
		101		101			54		54			15		15							
MANAGEMENT & LANGUAGES		1,133	1	1,134		1,083		1,083		852		852		647		647					
Accountancy & Finance	F	177		177	46	F	185		185	43	F	159		159	48	F	109		109	58	
	M	208		208	54	M	249		249	57	M	170		170	52	M	80		80	42	
		385		385			434		434			329		329			189		189		
Degree Entry Prog in Management	F	71		71	51	F	53		53	46	F					F					
	M	68		68	49	M	61		61	54	M					M					
		139		139			114		114												
Management	F	243		243	40	F	215		215	40	F	208		208	40	F	195		195	43	
	M	366	1	367	60	M	320		320	60	M	315		315	60	M	263		263	57	
		609	1	610			535		535			523		523			458		458		
MATHEMATICAL & COMP SCIENCES		81	5	86		54	2	56		19		19									
Computer Science	F	24	1	25	29	F	13		13	23	F	4			100						
	M	57	4	61	71	M	41	2	43	77	M	15			100						
TEXTILES		206		206		175		175		103		103		51		51					
Degree Entry Prog in Textiles & Design	F	29		29	91	F	26		26	87	F					F					
	M	3		3	9	M	4		4	13	M					M					
		32		32			30		30												
Textiles and Design	F	162		162	93	F	137		137	94	F	98		98	95	F	51		51	100	
	M	12		12	7	M	8		8	6	M	5		5	5	M					
		174		174			145		145			103		103			51		51		

The above numbers are excluded from student numbers reported on previous pages

POSTGRADUATE TAUGHT STUDENTS BY SCHOOL/PROGRAMME, ATTENDANCE LEVEL AND GENDER: 2010/11 - 2013/14
On-campus - Dubai

SCHOOL/Programme	2013/14					2012/13					2011/12					2010/11				
	Gend	ft	pt	Tot	%	Gend	ft	pt	Tot	%	Gend	ft	pt	Tot	%	Gend	ft	pt	Tot	%
UNIVERSITY TOTAL		408	694	1,102			339	661	1,000			220	556	776			309	389	698	
BUILT ENVIRONMENT		114	312	426			90	286	376			50	253	303			43	231	274	
Civil Engineering	F	7	6	13	17	F	2	6	8	17	F	1	3	4	31					
	M	21	43	64	83	M	17	22	39	83	M	3	6	9	69					
		28	49	77			19	28	47			4	9	13						
Construction Management & Surveying	F	11	19	30	10	F	13	23	36	12	F	7	28	35	13	F	8	30	38	15
	M	65	216	281	90	M	50	213	263	88	M	35	193	228	87	M	31	177	208	85
		76	235	311			63	236	299			42	221	263			39	207	246	
Urban Studies	F	3	7	10	26	F	1	8	9	30	F	1	7	8	30	F	1	7	8	29
	M	7	21	28	74	M	7	14	21	70	M	3	16	19	70	M	3	17	20	71
		10	28	38			8	22	30			4	23	27			4	24	28	
ENGINEERING & PHYSICAL SCIENCES		42	83	125			33	73	106			23	50	73			21	39	60	
Mechanical Engineering	F	11	11	22	18	F	9	5	14	13	F	6	1	7	10	F	6	1	7	12
	M	31	72	103	82	M	24	68	92	87	M	17	49	66	90	M	15	38	53	88
		42	83	125			33	73	106			23	50	73			21	39	60	
LIFE SCIENCES		20	12	32			13	12	25			6	3	9			197	197		
Psychology	F	9	10	19	59	F	10	7	17	68	F	5	1	6	67	F	109		109	58
	M	11	2	13	41	M	3	5	8	32	M	1	2	3	33	M	80		80	42
		20	12	32			13	12	25			6	3	9			189	189		
MANAGEMENT & LANGUAGES		121	154	275			107	159	266			73	120	193			85	88	173	
Accountancy & Finance	F	9	13	22	39	F	9	8	17	35	F	6	7	13	41	F	5	5	10	36
	M	19	15	34	61	M	13	18	31	65	M	7	12	19	59	M	8	10	18	64
		28	28	56			22	26	48			13	19	32			13	15	28	
Management	F	34	51	85	39	F	32	52	84	39	F	24	38	62	39	F	27	26	53	37
	M	59	75	134	61	M	53	81	134	61	M	36	63	99	61	M	45	47	92	63
		93	126	219			85	133	218			60	101	161			72	73	145	
MATHEMATICAL & COMP SCIENCES		43	24	67			24	33	57			12	22	34			19	18	37	
Computer Science	F	14	5	19	28	F	4	10	14	25	F	2	7	9	26	F	1	5	6	16
	M	29	19	48	72	M	20	23	43	75	M	10	15	25	74	M	18	13	31	84
PETROLEUM ENGINEERING		54	20	74			59	20	79			46	21	67			29	13	42	
Petroleum Engineering	F	5	3	8	11	F	4	2	6	8	F	2	3	5	7	F	2	5	7	17
	M	49	17	66	89	M	55	18	73	92	M	44	18	62	93	M	27	8	35	83
EBS (MBA)		14	89	103			13	78	91			10	87	97			112	112		
Edinburgh Business School	F	3	16	19	18	F	5	12	17	19	F	1	15	16	16	F	29		29	26
	M	11	73	84	82	M	8	66	74	81	M	9	72	81	84	M	83		83	74

The above numbers are excluded from student numbers reported on previous pages

UNDERGRADUATE INCOMING EXCHANGE, NON-GRADUATING AND VISITING STUDENTS: 2011/12 - 2013/14

SCHOOL/Programme	2013/14						2012/13						2011/12								
	EU/UK			OS			Full Tot	EU/UK			OS			Full Tot	EU/UK			OS			Full Tot
	ft	pt	Tot	ft	pt	Tot		ft	pt	Tot	ft	pt	Tot		ft	pt	Tot	ft	pt	Tot	
UNIVERSITY TOTAL	138	39	177	44		44	221	136	16	152	24	2	26	178	113	29	142	16		16	158
BUILT ENVIRONMENT	9		9	25		25	34	11		11	9		9	20	9		9	2		2	11
ENGINEERING & PHYSICAL SCIENCES	26	37	63				63	30	9	39		2	2	41	25	24	49	4		4	53
LIFE SCIENCES								2	2		1		1	3		1	1				1
MANAGEMENT & LANGUAGES	97		97	11		11	108	94	3	97	10		10	107	77	1	78	3		3	81
MATHEMATICAL & COMP SCIENCES	4		4	4		4	8	1		1	3		3	4	2		2	4		4	6
TEXTILES & DESIGN	2	2	4	4		4	8	2	2		1		1	3	3	3		3		3	6

The above numbers are excluded from student numbers reported on previous pages

The EU/UK numbers includes the following number of UK students: 2013/14, 2; 2012/13, 2; 2011/12, 3

UNDERGRADUATE FRESHERS: DOMICILES 2013/14 (ranked by population size)

On-campus - Scotland

Academic year of entry	Year 1	Year 2	Year 3	Year 4	Year 5	Total: All Years 2013/14	2012/13 Total	2011/12 Total	2010/11 Total
UNIVERSITY TOTAL	1,646	348	127	6	4	2,131	1,775	1,832	2,206
UK	1,421	219	75	2		1,717	1,347	1,311	1,546
Scotland	1091	171	67	2		1,331	1,013	1,068	1,229
Rest of UK	330	48	8			386	334	243	317
EU	94	10	24	3	4	135	193	310	460
France	5		23	3		31	76	101	293
Germany	8	2			4	14	10	32	43
Lithuania	8	2				10	14	27	3
Bulgaria	9					9	10	8	6
Greece	7	1				8	17	25	29
Cyprus	7					7	12	8	4
Hungary	6					6	1	3	2
Sweden	6					6	1	15	10
Spain	4	2				6	5	9	6
Italy	5	1				6	8	11	6
Poland	4		1			5	11	8	12
Finland	5					5	4	10	6
Netherlands	4	1				5	2	2	3
Other EU	16	1				17			
Overseas non-EU	131	119	28	1		279	235	211	200
China	17	25	21	1		64	48	66	38
Oman	10	33				43	23	3	2
Norway	35	3				38	46	32	23
Malaysia	9	25	2			36	30	19	21
India	1	9				10	7	7	3
UAE	9					9	5		3
Kazakhstan	3	4				7	5	12	6
U.S.A.	6		1			7	3	3	2
Kuwait	2	4				6	2	2	
Saudi Arabia	3	1	1			5	3	9	45
Other Overseas non-EU	36	15	3			54			

POSTGRADUATE TAUGHT COURSE FRESHER STUDENTS: DOMICILES 2010/11 - 2013/14
(ranked by population size)

Academic year of entry	Year 1	Year 2	Year 3	2013/14 Total	2012/13 Total	2011/12 Total	2010/11 Total
UNIVERSITY TOTAL	1,264			1,264	1,279	1,309	1,366
UK	326			326	288	306	384
Scotland	248			248	178	236	197
Rest of UK	78			78	110	70	187
EU	275			275	308	298	259
Greece	74			74	127	99	56
Germany	58			58	68	65	52
France	53			53	35	37	34
Spain	26			26	21	26	75
Italy	16			16	4	6	7
Poland	8			8	11	9	3
Cyprus	7			7	9	8	6
Netherlands	6			6	2	7	
Other EU	27			27	31	41	26
Overseas non-EU	663			663	705	704	722
China	248			248	312	264	175
India	44			44	38	45	91
Nigeria	40			40	36	58	86
Thailand	37			37	46	60	44
Malaysia	36			36	27	19	7
U.S.A.	27			27	16	11	19
Saudi Arabia	17			17	7	25	73
Canada	11			11	9		12
Russia	11			11	5	5	6
Ghana	12			12		20	2
Kazakhstan	10			10	23	36	24
Pakistan	10			10	7	4	17
Colombia	10			10	4	5	2
Norway	10			10	18	7	12
Iraq	9			9	6	3	2
Libya	8			8	5	16	25
Oman	6			6	13	6	12
Egypt	6			6	5	1	2
Hong Kong	5			5	5	4	1
UAE	5			5			10
Other Overseas non-EU	101			101	123	115	100

Figures for 2010 to 2014 exclude a small number of Edinburgh Business School fresher students.

POSTGRADUATE RESEARCH FRESHER STUDENT: DOMICILES 2009/10 - 2013/14
(ranked by population size)

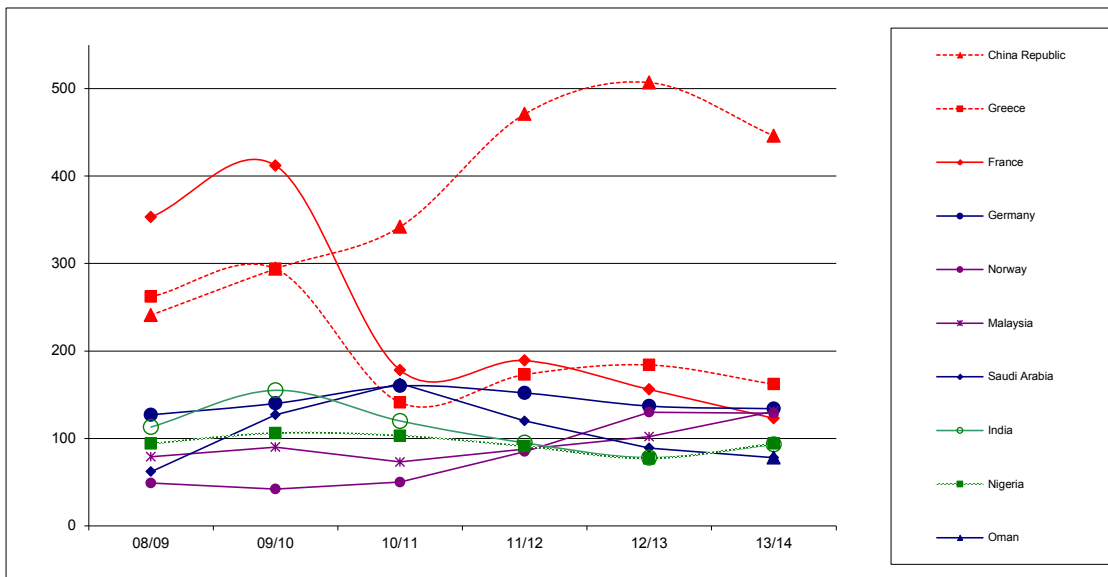
Academic year of entry	Year 1	Year 2	Year 3	2013/14	2012/13	2011/12 Total	2010/11 Total
UNIVERSITY TOTAL	297			297	142	128	145
UK	203			203	73	49	73
Scotland	47			47	32	35	33
Rest of UK	156			156	41	14	40
EU	30			30	19	24	12
Spain	5			5	3		2
Italy	5			5	1	6	2
Greece	3			3	9	5	1
Germany	3			3	2	3	1
Lithuania	3			3	1		
Poland	3			3		4	1
Romania	2			2			
Bulgaria	2			2			
Cyprus	1			1	2	2	
Netherlands	1			1			1
Ireland	1			1			
Belgium	1			1			
Other EU					1	4	4
Overseas non-EU	64			64	50	55	60
Nigeria	11			11	9	4	6
China	6			6	8	6	7
U.S.A.	5			5	1	2	2
Iran	4			4	4	6	5
India	4			4	2	5	5
Malaysia	4			4	1		
Other Overseas non-EU	30			30	25	32	35

NON-UK DOMICILED STUDENTS (UG, PGT, PGR) BY COUNTRY: 2008/09 - 2013/14
On-campus - Scotland

CONTINENT/COUNTRY	2013/14	%	2012/13	%	2011/12	%	2010/11	%	2009/10	%	2008/09	%
UNIVERSITY TOTAL	2,745	100	2,435	100	2,886	100	2,476	100	2,697	100	2,302	100
China Republic	446	18	507	21	471	19	343	13	279	11	229	8
Greece	162	7	184	8	173	7	141	5	294	12	262	10
Germany	134	6	137	6	152	6	160	6	140	6	127	5
Malaysia	131	5	102	4	88	4	73	3	90	4	79	3
Norway	129	5	130	5	85	3	78	3	61	2	54	2
France*	123	5	156	6	189	8	178	7	412	17	353	13
Nigeria	94	4	77	3	91	4	109	4	106	4	94	3
India	93	4	78	3	95	4	131	5	155	6	113	4
Saudi Arabia	78	3	89	4	120	5	166	6	127	5	62	2
Oman	78	3	50	2	24	1	24	1	16	1	20	1
Irish Republic	68	3	66	3	96	4	112	4	153	6	129	5
Spain	64	3	58	2	60	2	95	4	40	2	31	1
United Arab Emirates	62	3	42	2	39	2	37	1	21	1	15	1
Italy	60	2	45	2	45	2	33	1	32	1	26	1
Lithuania	56	2	54	2	51	2	22	1	9	~	6	~
Thailand	52	2	57	2	74	3	52	2	20	1	23	1
USA	49	2	31	1	32	1	31	1	28	1	29	1
Poland	45	2	55	2	56	2	50	2	71	3	67	2
Cyprus	38	2	38	2	26	1	23	1	17	1	19	1
Bulgaria	37	2	31	1	24	1	12	~	12	~	5	~
Kazakhstan	33	1	44	2	60	2	42	2	29	1	16	1
Iran Islamic Republic	33	1	30	1	41	2	38	1	34	1	36	1
Finland	26	1	27	1	23	1	19	1	11	~	6	~
Pakistan	26	1	21	1	24	1	33	1	25	1	34	1
Russia	26	1	21	1	19	1	14	1	17	1	13	~
Libyan Arab Republic	24	1	24	1	47	2	58	2	79	3	39	1
Latvia	24	1	28	1	23	1	13	~	9	~	8	~
Netherlands	20	1	10	~	15	1	10	~	6	~	8	~
Hong Kong	19	1	25	1	18	1	15	1	15	1	12	~
Ghana	19	1	21	1	26	1	6	~	20	1	19	1
Canada	19	1	16	1	8	~			8	~	9	~
Switzerland	19	1	18	1	8	~			11	~	5	~
Syrian Arab Republic	18	1	22	1	40	2	30	1	32	1	26	1
Sweden	16	1	21	1	28	1	21	1	24	1	15	1
Kuwait	16	1	13	1	9	~			7	~	9	~
Singapore	16	1	12	1	7	~			3	~	5	~
Iraq	16	1	9	~	11	~	7	~	5	~	2	~
Egypt	15	1	12	1	8	~			10	~	8	~
Hungary	15	1	8	~	6	~			4	~	2	~
Portugal	13	1	6	~	8	~			13	~	8	~
Mexico	12	1	12	1	17	1	16	1	14	1	23	1
Indonesia	11	1	15	1	8	~			7	~	8	~
Qatar	11	1	9	~	7	~			2	~		
Belgium	10	~	16	1	13	~	12	~	14	1	13	~
Romania	10	~	8	~	9	~			6	~	5	~
OTHER EUROPE	111											
OTHER AFRICA	80											
OTHER ASIA	39											
OTHER AMERICAS	41											
OTHER AUSTRALIA	8											

Percentages are expressed as a proportion of the non-UK total
 Top 10 domiciles by population size are highlighted in each year prior to 2013/14
 UK dependent countries are not included
 *Including any French dependencies
 Grouped 'other' data by continent is reported for 2012/13 and earlier years in the relevant annual publications for each year
 Inclusions/exclusions detailed on page 5 apply. Note that total non-UK numbers in this report will not match exactly those indicated on page 5 which assigns students to 'other EU' and 'overseas' categories on the basis of the "fees status" assigned to the student

Top 10 domiciles by population size (on-campus students studying in Scotland): trends 2008/09 - 2013/14





ALL TRANSNATIONAL DEGREE PROGRAMME STUDENTS BY MODE OF STUDY AND DOMICILE ACTIVE IN THE HESA REPORTING YEAR 2012/13

	SBE		EPS		SLS		MACS		SML		IPE		TEX		EBS		ALP TOT		IDL TOT		FULL TOT*			
	ALP	IDL	ALP	IDL	ALP	IDL	ALP	IDL	ALP	IDL	ALP	IDL	ALP	IDL	ALP	IDL	ALP	IDL	ALP	IDL	ALP	IDL	ALP	IDL
University Total	1,501	656	2,157	154	77	231	86	109	195	3	5	1,250	65	833	170	1,017	1,187	22	2,758	2,589	5,347	9,445	4,785	14,230
South Africa	11	11	11	1	1	1	1	1	1	1	833	1	833	4	4	4	4	4	239	239	5,347	1,792	256	2,048
Trinidad & Tobago	105	7	112	12	12	28	12	42	42	2	2	412	25	437	222	222	8	8	1,355	8	1,363	1,709	24	1,733
United Kingdom	18	234	252	28	28	28	42	42	42	2	2	412	25	437	222	222	8	8	430	287	717	882	840	1,722
Hong Kong	526	4	530							297	1	288	1	288					90	37	127	913	42	955
Egypt	12	12	12									27	1	27					669	92	761	669	132	801
Singapore	527	4	531	10	10	10	10	10	10	72	1	73	5	73					338	16	354	338	26	364
Uganda	5	5	5									5	5	5					61	61	338	26	364	364
Malaysia	203	4	207							13	10	23	16	23					164	164	338	26	364	364
Nigeria	54	54	54	8	8	8	8	8	8			21	37	37					111	111	226	111	208	319
USA	7	7	7	2	2	2	2	2	2			65	65	65					57	16	73	284	27	311
Greece	64	3	67	154	1	154	1	1	1	9	3	12	4	12					111	111	226	111	208	319
Canada	15	15	15									40	40	40					57	16	73	284	27	311
Jamaica	101	4	105							66	1	67	4	67					59	5	64	259	11	270
Zambia	5	5	5							247	4	247	5	247					222	27	249	222	37	259
Bangladesh																			135	35	170	156	46	202
China	6	6	6									21	5	26					195	195	354	26	380	380
Ukraine	3	3	3									17	17	17					153	16	169	153	39	192
Norway	3	3	3									46	46	46					69	69	31	160	31	191
United Arab Emirates	41	41	41							31	31	31	31	31					104	65	169	104	68	172
Switzerland	1	1	1							28	28	28	28	28					126	4	130	154	16	170
Mauritius	10	10	10																					
Australia	20	20	20									16	59	75										
Germany	6	6	6																					
Iran	2	2	2																					
Ireland	36	36	36																					
Russia	2	2	2																					
Sweden	15	15	15																					
Ghana	4	4	4																					
Sri Lanka	4	4	4							38	38	38	38	38										
Azerbaijan	5	5	5									54	14	68										
Malta	5	5	5																					
Saudi Arabia	8	8	8																					
Bahrain	4	4	4																					
Kenya	3	3	3																					
Sweden	23	23	23																					
Qatar	15	15	15																					
India	12	12	12																					
Onan	1	1	1																					
Israel	1	1	1																					
Zimbabwe	6	6	6																					
Maldives	1	1	1																					
Serbia	2	2	2																					
Denmark	2	2	2																					
Syria	1	1	1																					
Colombia	9	9	9																					
Kuwait	9	9	9																					
Mexico	1	1	1																					
France	1	1	1																					
Netherlands	4	4	4																					
Pakistan	4	4	4																					
OTHER AFRICA	13	13	13																					
OTHER AMERICAS	4	4	4																					
OTHER ASIA	10	10	10																					
OTHER AUSTRALIA	3	3	3																					
OTHER EUROPE	23	23	23																					

Notes: ALP = Study with an Approved Learning Partner
 IDL = Study by independent distance learning
 Student numbers include students registered on degree courses who were active in the HESA defined reporting year from 1 August 2012 to 31 July 2013.
 *At July 2013 an additional 3,840 students, not accounted for in the above figures, had commenced study with Edinburgh Business School but had not yet applied for matriculation to the full degree course. The School therefore had approximately 10,800 active students in total. In 2012/13 there was an overall total of over 18,000 active students (matriculated/not yet matriculated combined).

APPROVED LEARNING PARTNERS DEGREE PROGRAMME STUDENTS 2013/14

	ALP	SLS	SBE	EPS	MACS	SML	TEX	IFE	EBS	Total
UNIVERSITY TOTAL		98	1,606	154	962	2,320	22	170	4,113	9,445
Australia	University of Queensland							16		16
Azerbaijan	TTE Petrofac Ltd							54		54
Bahrain	Bahrain Training Institute		62							62
Bangladesh	Bangladesh Institute of Management Studies					247				247
China	University of Petroleum, East China							21		21
Costa Rica	University para la Cooperacion Internacional								7	7
Denmark	Fokus Limited								5	5
Egypt	The American University in Cairo								669	669
Greece	Centre Euro Mgt Studies (CEMS)		64						57	121
	iCon Training International					9				9
	Technical Educational Institute of Athens			4						4
	Technical Educational Institute of Piraeus			150						150
Greece Total			64	154		9			57	284
Hong Kong	Hong Kong - Continuous Professional Education		391							391
	Hong Kong College of Engineering		135							135
	The Hong Kong Polytechnic University					297				297
	Hong Kong Cyber University								90	90
Hong Kong Total			526			297			90	913
Iran	ICTEC (Tehran)				3				37	40
Ireland	HSI Limerick Business School								42	42
Israel	Ramat-Gan College								48	48
Jamaica	B&B University College Ltd	33	101			66			59	259
Kazakhstan	Kazakh-British Technical University							2		2
Malaysia	Imperia Institute of Technology		203							203
	Fajar International College					13				13
	Universiti Teknologi Petronas							16		16
Malaysia Total			203			13		16		232
Maldives	Clique College							37		37
Malta	The Malta Institute of Management								43	43
Mauritius	Glamis Business School					28			126	154
Norway	Oslo School of Management								153	153
Russia	Tomsk Polytechnic University							61		61
Serbia	English School of Business	9							24	33
Singapore	Trent Global College of Technology and Management		527							527
	Uptrend Education Pte Ltd	10				72				82
	East Asia School Business Institute Management								135	135
Singapore Total		10	527			72			135	744
South Africa Total					959	833				1,792
Sri Lanka	Oxford College of Business	34				38				72
Sweden	Executive Management Institute								58	58
Switzerland	FHNW University Applied Sciences NWSwitzerland								104	104
Trinidad & Tobago	School of Higher Education Ltd (San Fernando)	12	105			145				262
	School of Higher Education Ltd (San Juan)					92				92
	School of Business & Computer Science (T&T)								1,355	1,355
Trinidad & Tobago Total		12	105			237			1,355	1,709
United Arab Emirates	Dubai (ALP)					31				31
UK	West London College					412	22		430	864
	Adam Smith College		18							18
UK Total			18			412	22		430	882
USA	Network of Excellence in Training								111	111
Uganda	Management and Accounting Training Company Ltd								338	338
Zambia	Zambian Institute (ZICAB)								222	222

CONVERSION RATES OF UNDERGRADUATE APPLICATIONS TO ENTRANTS 2009 - 2013 ENTRY

UK/EU Applicants

SCHOOL/Programme	Applications					Entrants					Conversion Apps to Entrants %				
	2013	2012	2011	2010	2009	2013	2012	2011	2010	2009	2013	2012	2011	2010	2009
UNIVERSITY TOTAL	12,076	10,822	9,495	9,226	8,043	1,916	1,542	1,634	1,286	2,012	16	14	17	14	25
BUILT ENVIRONMENT	908	859	1,040	1,081	1,156	179	206	211	151	256	20	24	20	14	22
Architectural Engineering	146	159	151	147	121	30	34	28	21	23	21	21	19	14	19
Civil Engineering	520	466	550	524	535	92	116	95	53	121	18	25	17	10	23
Construction Mgt & Surveying	176	177	241	294	325	34	35	58	46	79	19	20	24	16	24
Urban Studies	66	57	98	116	175	23	21	30	31	33	35	37	31	27	19
ENGINEERING & PHYSICAL SCIENCES	3,507	2,948	2,556	2,347	2,104	451	436	429	357	564	13	15	17	15	27
Chemical Engineering	766	515	432	355	363	98	83	85	66	77	13	16	20	19	21
Chemistry	710	621	469	418	453	90	92	78	61	125	13	15	17	15	28
Combined Studies (BSc)	57	53	64	41	74	9	7	12	2	37	16	13	19	5	50
Electrical, Electronic & Computer Engineering	400	332	300	320	209	67	65	62	53	65	17	20	21	17	31
Mechanical Engineering	972	873	787	712	603	83	102	112	93	156	9	12	14	13	26
Physics	495	453	401	415	324	87	73	64	68	82	18	16	16	16	25
BEng Engineering	107	101	103	86	78	17	14	16	14	22	16	14	16	16	28
LIFE SCIENCES	1,813	1,634	1,258	1,600	1,135	345	131	230	155	277	19	8	18	10	24
Biological Sciences	859	681	555	551	490	163	65	138	66	135	19	10	25	12	28
Psychology	954	953	703	403	309	182	66	92	29	76	19	7	13	7	25
Sport & Exercise Science				646	336				60	66				9	20
MANAGEMENT & LANGUAGES	3,325	3,121	2,384	2,132	2,012	494	390	422	292	449	15	12	18	14	22
Accountancy & Finance	630	624	532	537	592	112	81	93	67	136	18	13	17	12	23
Economics	485	511	283	212	202	72	64	59	33	53	15	13	21	16	26
Languages	594	568	456	391	383	133	101	122	91	109	22	18	27	23	28
Management	1,376	1,238	931	619	561	163	122	112	61	103	12	10	12	10	18
Management (Scottish Borders Campus)	240	180	182	373	274	14	22	36	40	48	6	12	20	11	18
MATHEMATICAL & COMPUTER SCIENCES	1,438	1,176	1,151	1,006	965	239	190	152	198	265	17	16	13	20	27
Actuarial Mathematics & Statistics	271	253	267	244	255	66	60	46	62	71	24	24	17	25	28
Computer Science	600	413	412	414	353	87	47	53	75	102	15	11	13	18	29
Mathematics	567	510	472	348	357	86	83	53	61	92	15	16	11	18	26
TEXTILES & DESIGN	1,085	1,084	1,106	1,060	671	208	189	190	133	201	19	17	17	13	30

Overseas Applicants

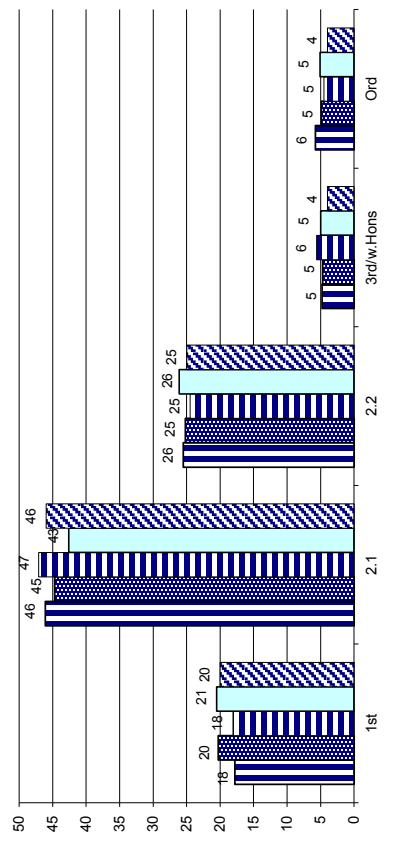
SCHOOL/Programme	Applications					Entrants					Conversion Apps to Entrants %				
	2013	2012	2011	2010	2009	2013	2012	2011	2010	2009	2013	2012	2011	2010	2009
UNIVERSITY TOTAL	1396	1161	946	871	712	287	228	208	194	174	21	20	22	22	24
BUILT ENVIRONMENT	150	98	103	103	102	41	14	18	19	24	27	14	17	18	24
Architectural Engineering	37	20	17	18	17	6	4	4	6	4	16	20	24	33	24
Civil Engineering	59	56	52	33	35	34	8	8	7	9	58	14	15	21	26
Construction Mgt & Surveying	43	17	26	28	32	1	1	2	3	7	2	6	8	11	22
Urban Studies	11	5	8	24	18		1	4	3	4		20	50	13	22
ENGINEERING & PHYSICAL SCIENCES	377	217	205	176	190	64	41	28	40	40	17	19	14	23	21
Chemical Engineering	163	75	70	59	66	30	13	14	11	13	18	17	20	19	20
Chemistry	17	16	17	11	5		4	2	2			25	12	18	
Combined Studies (BSc)	5	3	2	6		1				1	20				
Electrical, Electronic & Computer Engineering	64	26	35	38	44	10	2	3	15	12	16	8	9	39	27
Mechanical Engineering	106	70	66	48	61	22	18	6	11	11	21	26	9	23	18
Physics	13	21	11	6	10		2	3	1	2		10	27	17	20
BEng Engineering	9	6	4	8	4	1	2			1	11	33			25
LIFE SCIENCES	82	79	63	47	15	16	19	12	12	4	20	24	19	26	27
Biological Sciences	41	36	40	27	12	10	11	6	10	4	24	31	15	37	33
Psychology	41	43	23	16	1	6	8	6	2		15	19	26	13	
Sport & Exercise Science				4	2										
MANAGEMENT & LANGUAGES	414	398	295	251	175	83	83	87	59	56	20	21	29	24	32
Accountancy & Finance	105	79	81	68	49	25	16	23	25	22	24	20	28	37	45
Economics	69	93	43	31	28	11	24	16	8	14	16	26	37	26	50
Languages	8	19	6	8	8	1	1	1	2	2	13	5	17	25	25
Management	207	180	127	70	48	45	42	45	22	14	22	23	35	31	29
Management (Scottish Borders Campus)	25	27	38	74	42	1		2	2	4	4		5	3	10
MATHEMATICAL & COMPUTER SCIENCES	333	318	241	266	221	77	62	56	58	46	23	19	23	22	21
Actuarial Mathematics & Statistics	244	241	180	175	153	60	48	41	36	29	25	20	23	21	19
Computer Science	39	30	29	40	31	5	2	8	11	7	13	7	28	28	23
Mathematics	50	47	32	51	37	12	12	7	11	10	24	26	22	22	27
TEXTILES & DESIGN	40	51	39	28	9	6	9	7	6	4	15	18	18	21	44

FIRST DEGREES & OTHER AWARDS: 2011 - 2013 - Scottish Campus

SCHOOL/Programme	2013											2012											2011																																		
	EFD			Honours 1st 2.1			% EFD, 1.2/1.2.1			Ord Yr-4			Ord Yr-3			Un-clas'd			Total			EFD			Honours 1st 2.1			% EFD, 1.2/1.2.1			Ord Yr-4			Un-clas'd			Total			EFD			Honours 1st 2.1			% EFD, 1.2/1.2.1			Ord Yr-4			Un-clas'd			Total		
	1st	2.1	HE	1st	2.1	HE	1.2/1.2.1	1.2/1.2.1	3rd	Yr-4	Yr-3	Other Cert HE	Dip HE	Total	EFD	1st	2.1	HE	1.2/1.2.1	1.2/1.2.1	3rd	Yr-4	Yr-3	Other Cert HE	Dip HE	Total	EFD	1st	2.1	HE	1.2/1.2.1	1.2/1.2.1	3rd	Yr-4	Yr-3	Other Cert HE	Dip HE	Total																			
UNIVERSITY TOTAL	162	212	492	71	66	287	47	41	124	93	56	1,494	167	25	52	72	63	251	49	54	193	1	117	52	1,492	174	164	71	65	222	51	41	107	1,392																							
BUILT ENVIRONMENT	51	14	64	76	66	35	1	4	2	9	11	191	56	25	52	72	63	251	49	54	17	9	2	212	57	16	71	58	37	8	8	8	204																								
Architectural Engineering	6	2	13	78	71	5	1	1	1	1	2	30	9	3	2	74	50	4	1	4	4	1	1	25	5	64	33	2	1	1	1	13																									
Civil Engineering	45	2	7	89	56	5	1	1	1	4	4	70	47	16	32	71	28	10	7	1	4	6	1	82	52	1	81	36	8	3	3	1	77																								
Construction Management & Surveying	3	30	60	60	20	2	1	4	3	4	3	63	6	6	11	68	68	8	1	6	8	1	1	78	9	6	61	19	3	2	4	70																									
Urban Studies	7	14	81	81	5							28	6	6	11	68	68	8	1	6	8	1	1	27	6	7	71	8	1	2	3	44																									
ENGINEERING & PHYSICAL SCIENCES	104	23	34	70	46	15	7	39	29	13	310	97	11	28	62	32	60	11	13	66	33	35	13	334	107	15	74	51	34	8	15	30	337																								
Chemical Engineering	24	4	55	15	19	3	1	3	2	2	55	24	1	2	56	5	15	3	2	3	3	3	2	50	22	2	90	67	2	1	4	35																									
Chemistry	18	4	3	78	50	4	2	1	14	6	1	53	19	1	2	67	21	8	2	1	22	8	1	64	24	1	70	35	7	3	7	69																									
Electrical, Electronic & Comp Eng	7	1	4	71	50	3	2	6	7	3	30	5	1	8	50	39	10	4	15	2	4	5	1	64	24	1	70	35	7	3	7	69																									
Mechanical Engineering	42	14	19	78	61	15	4	2	5	8	3	112	36	7	16	73	51	17	3	2	6	5	1	93	30	7	80	64	7	1	5	7	87																								
Physics	13	2	3	72	42	4	3	2	4	3	34	13	2	1	50	12	9	3	3	3	8	9	8	47	22	2	76	50	8	2	5	52																									
Combined Studies (BSc/BEng)	2	1	38	38	1	1	3	12	2	4	26	2	2	1	33	33	1	1	12	1	12	9	8	32	2	1	29	29	1	4	9	42																									
LIFE SCIENCES	15	76	64	64	41	4	6	7	14	6	169	19	19	66	65	65	33	4	9	21	16	12	160	20	20	66	66	25	11	4	14	151																									
Biology	7	28	52	52	22	4	6	1	7	3	78	9	29	66	66	13	3	4	13	3	3	8	6	85	9	58	58	15	8	3	8	82																									
Psychology	2	32	71	71	14				1	6	3	58	5	13	67	67	6	1	2	3	5	5	1	36	7	85	85	3	1	1	31																										
Sport & Exercise Science	6	16	81	81	5	1			5	1	33	5	5	24	63	63	14		3	5	5	3	5	59	4	64	64	7	2	1	5	38																									
MANAGEMENT & LANGUAGES	54	183	71	71	74	10	13	52	21	13	420	45	45	152	69	69	64	10	14	51	23	11	370	44	44	71	71	70	8	9	30	380																									
Accountancy & Finance	14	60	77	77	18	4	11	3	1	111	18	18	37	71	71	16	3	3	12	10	1	100	15	15	76	76	16	3	1	11	102																										
Economics	9	27	78	78	7	1	2	5	5	2	58	5	19	77	77	7	2	2	2	4	2	38	7	38	7	64	64	9	1	6	83																										
Languages	13	29	65	65	19	2	2	5	2	5	72	6	25	53	53	22	4	1	4	2	4	2	64	12	12	69	69	16	3	2	8	83																									
Management	18	65	73	73	25	4	2	15	6	2	137	16	16	71	80	80	16	6	19	6	19	4	136	10	10	75	75	24	2	5	130																										
Management (Scottish Borders Campus)	2	17	17	17	5	3	2	4	1	6	27	2	2	17	17	17	5	3	3	4	4	1	15	1	15	15	5	3	3	13	14																										
Combined Studies (BA)	7	70	71	74	73	32	11	8	13	10	232	14	64	53	71	68	34	12	8	18	1	29	8	241	10	48	76	74	26	9	2	15	186																								
MATHEMATICAL & COMP SCIENCES	1	32	22	68	68	14	6	7	3	6	97	35	35	26	82	82	10	2	1	1	4	3	82	26	26	83	83	7	2	6	61																										
Actuarial Mathematics & Statistics	6	19	67	63	10	4	2	4	6	4	63	9	11	13	70	63	7	1	6	9	1	14	1	72	7	9	73	68	10	1	46																										
Computer Science	30	30	87	87	8	1	2	1	1	1	72	5	18	14	58	54	17	9	1	8	11	4	87	3	13	72	71	9	7	1	9	79																									
Mathematics	36	64	68	68	39	6	3	11	10	3	172	34	34	59	75	75	25	3	3	20	5	6	155	21	21	62	62	30	7	3	10	134																									
TEXTILES & DESIGN	36	64	68	68	39	6	3	11	10	3	172	34	34	59	75	75	25	3	3	20	5	6	155	21	21	62	62	30	7	3	10	134																									
Textiles & Design	36	64	68	68	39	6	3	10	10	3	170	33	33	59	75	75	25	2	3	20	5	6	153	21	21	47	47	30	7	3	10	134																									
Combined Studies	1	1	1	1	1	1	1	1	1	1	2	1	1	1	1	1	1	1	1	1	1	1	2	1	2	1	1	1	1	1	1	1	1																								

Notes: EFD = Enhanced First Degree. % EFD, 1st, 2.1 provides the percentage of combined EFD/1/2.1 degree awards against the total combined EFD and Honours (4 year) awards. % 1, 2.1 provides the percentage of combined 1st and 2.1 degree awards against the total Honours (4 year) awards.

Classified Honours Degree Classifications 2009 - 2013 (% of total) (excludes enhanced first degrees)



FIRST DEGREES AND OTHER AWARDS (INTERNATIONAL PROGRAMMES) 2009 - 2013

SCHOOL/Programme	2013			2012 All awards	2011 All awards	2010 All awards	2009 All awards
	Ord Yr 3	Dip HE	Cert HE				
UNIVERSITY TOTAL	1,202	57	38	1,297	807	782	551
BUILT ENVIRONMENT	485	6	6	485	455	479	422
Architectural Engineering	6			1	1	42	276
Construction Management & Surveying	454			444	444	418	146
Urban Studies	25			38	10	19	
LIFE SCIENCES	5	5	5	1			
Applied Psychology	5			1			
MANAGEMENT & LANGUAGES	595	57	38	690	540	335	268
Management Programme	595	57	38	690	540	335	268
MATHEMATICAL & COMP SCIENCES	112			131	20	35	11
Computer Science	112			131	20	35	11
TEXTILES & DESIGN	5			5			

HIGHER DEGREES AND OTHER AWARDS - ON-CAMPUS (SCOTLAND) STUDENTS: 2011 - 2013

SCHOOL/Programme	2013				2012				2011				Total					
	PhD	MPhil	Taught Master	PgDip	PgCert	Total	PhD	MPhil	Taught Master	PgDip	PgCert	Total		PhD	Taught Master	PgDip	PgCert	Total
UNIVERSITY TOTAL	93	3	1,050	94	91	1,331	116	4	1,092	102	98	1,415	114	1,104	97	123	9	1,447
BUILT ENVIRONMENT	12		152	19	9	192	15		180	12	21	228	8	233	27	11		279
Architectural Engineering			20		1	21			20		1	23		14				14
Civil Engineering	3		27	4	3	37	6		42	3	1	52	5	53	5	1		64
Construction Management & Surveying	6		50	5	1	62	6		54	3	9	72	2	84	11	6		103
Urban Studies	3		55	10	4	72	3		63	4	10	80	1	81	11	4		97
Built Environment (general)									1			1		1				1
ENGINEERING & PHYSICAL SCIENCES	37	2	150	3	1	193	37	1	158		4	200	43	166	9	3		221
Chemical Engineering	3		8			11	3	1	10			14	4	15	1			20
Chemistry	4	1	9	1		15	9		5		3	17	10	8	1			19
Electrical, Electronic & Computer Engineering	5		38	1		44	7		60		1	68	14	60	4	2		80
Mechanical Engineering	11	1	87		1	100	8		68			76	6	68	1	1		76
Physics	14		8			23	10		15			25	9	15	2			26
LIFE SCIENCES	9		107	10	4	130	6		55	1	3	65	8	100	7	2		117
Biology	7		77	5	2	91	5		51	1	3	60	7	100	7	2		116
Life Sciences General	1					1												
Psychology	1		30	5	2	38	1		4			4	1					1
Sport & Exercise Science							1					1						
MANAGEMENT & LANGUAGES	7		318	42	8	375	8		334	8	49	400	9	236	29	2	8	284
Accountancy and Finance	2		84	6	1	93			60		10	70	1	38	2			41
Economics	4					4	1					1	1	1				1
Languages			34	6		40	4		48	1	11	65	5	36	7		8	56
Management	1		200	30	7	238	3		226	7	28	284	2	162	20	2		186
MATHEMATICAL & COMPUTER SCIENCES	10		131	11	5	157	22		169	10	16	219	22	179	17	5	1	224
Actuarial Mathematics & Statistics	1		75	8	1	85	6		81	3	7	97	4	95	12	3		114
Computer Science	6		38	3	3	50	10		67	6	7	91	11	59	5	2		78
Mathematics	3					18	6		21	1	2	31	7	25				32
PETROLEUM ENGINEERING	11		174	8	43	236	25	1	170	49	5	250	17	169	7	91		284
TEXTILES & DESIGN	7	1	18	1	1	28	3	2	26	1		32	7	21	1			29
Academic Practice						20				21		21						9

Notes: Small numbers of campus based and consortium MBA graduates are included in the external programmes Edinburgh Business School total below.

HIGHER DEGREES AND OTHER AWARDS - INTERNATIONAL PROGRAMMES*: 2011 - 2013 (*Independent distance learners/ supported learners through ALP network)

SCHOOL/Programme	2013				2012				2011				Total				
	PhD & DBA	Taught Master	PgDip	PG Cert	PhD & DBA	Taught Master	PgDip	PG Cert	PhD & DBA	Taught Master	PgDip	PG Cert		PhD & DBA	Taught Master	PgDip	PG Cert
UNIVERSITY TOTAL	16	1,398	51	55	1,520	9	1,442	36	67	1,584	6	1,260	28	81	28	81	1,375
BUILT ENVIRONMENT		146	34	45	225	3	190	24	58	275	1	46	24	46	117		117
Architectural Eng		9	1	2	12		12	1	3	16		6	4	5	15		15
Civil Engineering		41	5	11	57	1	43	2	7	53		12	1	13			13
Construction Management & Surveying		81	24	32	137	2	126	21	47	196	1	23	19	40	83		83
Urban Studies		15	3		18		7		1	8		4		1	5		5
Built Environment (general)			1		1		2					1					
ENGINEERING & PHYSICAL SCIENCES	2	78	7		87	3	63	3	2	71		1					1
Electrical, Electronic & Computer Eng					1		1			2							
Mechanical Engineering	2	78	7		87	2	62	3	2	69		1					1
Physics																	
LIFE SCIENCES	1	10	2	7	20		9	9		18	1	4	3	34			42
Biology	1	9	2	4	16		9	9		18	1	4	3	1	9		9
Psychology		1		3	4									33			33
MATHEMATICAL & COMPUTER SCIENCES	1	1			2	1	3			4							
Computer Science	1	1			2	1	3			4							
PETROLEUM ENGINEERING	3	95	8		106		77		2	79		41	1	1	43		43
EDINBURGH BUSINESS SCHOOL (Masters/Doctorates)	9	1,068		3	1,077	2	1,100	4	5	1,102	4	1,168					1,172
Academic Practice					3					5							

FIRST DEGREES & OTHER AWARDS: 2011 - 2013 - Dubai Campus

SCHOOL/Programme	2013				2012				2011				Total																	
	Honours 1st	2.1	% 1,2,1	2.2	3rd	Ord from Hons	Ord Yr:3	Other Cert HE	Dip HE	Total	Honours 1st	2.1		% 1,2,1	2.2	3rd	Ord Yr:3	Other Cert HE	Dip HE	Total										
UNIVERSITY TOTAL	15	25	53	21	7	8	332	41	15	464	14	14	56	8	11	3	233	23	3	309	8	8	59	6	5	88	8	2	125	
BUILT ENVIRONMENT	2	5	78	2			29	8	2	48							20	1		21									9	
Architectural Engineering								2		2							4	1		5									9	
Civil Engineering	2	5	78	2			7	6	2	24							16			16										
Construction Management & Surveying							22			22																				
ENGINEERING & PHYSICAL SCIENCES	10	10	50	9	3	3	8	45	5	95	13	8	58	5	9	1	40	3	3	82	7	6	65	4	3	10	3	2	35	
Electrical, Electronic & Comp Eng	4	5	53	3	2	3	20	20	37	56	7	3	67	2	3	20	1	2	2	38	2	3	63	1	2	5	2	1	16	
Mechanical Engineering	6	5	50	6	1	4	24	5	5	56	6	5	52	3	6	1	20	2	1	44	5	3	67	3	1	5	1	1	19	
Combined Studies (BSc/BEng)						1	1		2	2																				
LIFE SCIENCES								1	1	2																				
Psychology								1	1	2																				
MANAGEMENT & LANGUAGES	3	9	57	6	3		229	24	8	282	1	6	50	3	2	2	172	17		203	1	2	43	2	2	69	5		81	
Accountancy & Finance	3	5	67	4			91	10	1	114							86	3		91									18	
Management		4	44	2	3		138	14	7	168	1	4	42	3	2	2	86	14		112	1	2	43	2	2	51	5		63	
TEXTILES & DESIGN	1	17	4	1			29	3	3	38							1	2		3										

HIGHER DEGREES AND OTHER AWARDS: 2010 - 2013 - Dubai Campus

SCHOOL/Programme	2013				2012				2011				2010				Total
	Taught Master	PgDip	PgCert	Total	Taught Master	PgDip	PgCert	Total	Taught Master	PgDip	PgCert	Total	Taught Master	PgDip	PgCert	Total	
UNIVERSITY TOTAL	259	58	28	345	244	60	36	342	200	42	25	267	153	15	9	177	
BUILT ENVIRONMENT	110	17	16	143	119	18	24	161	108	16	14	138	81	3	6	90	
Civil Engineering	4		1	5													
Construction Management & Surveying	99	14	13	126	112	12	22	146	104	15	13	132	81	3	5	89	
Urban Studies	7	3	2	12	7	6	2	15	4	1	1	6			1	1	
ENGINEERING & PHYSICAL SCIENCES	29	1		30	22			22	8			8	2		2	2	
Mechanical Engineering	29	1		30	22			22	8			8	2		2	2	
Physics																	
LIFE SCIENCES	6	1	1	8		1	1	2									
Psychology	6	1	1	8		1	1	2									
MANAGEMENT & LANGUAGES	56	25	9	90	67	37	7	111	40	21	5	66	16	3	1	20	
Accountancy and Finance	14	5	2	21	10	2	1	13									
Management	42	20	7	69	57	35	6	98	40	21	5	66	16	3	1	20	
MATHEMATICAL & COMPUTER SCIENCES	11	4	2	17	19	1	4	24	16	2	1	19	23	6	1	30	
Computer Science	11	4	2	17	19	1	4	24	16	2	1	19	23	6	1	30	
PETROLEUM ENGINEERING	47	10		57	17	4	1	22	28	3	5	36	31	3	1	35	

UNDERGRADUATE STUDENT PROGRESSION: 2010/11 - 2013/14

ALL YEARS: On-Campus - Scotland

SCHOOL : Programme	2012/13 to 2013/14				2011/12 to 2012/13				2010/11 to 2011/12				Total								
	Awarded degree/ or eligible for other qualification % of total	Continuing as registered students in 2013/14 % of total	Withdrawn from the University % of total	Total	Awarded degree/ or eligible for other qualification % of total	Continuing as registered students in 2012/13 % of total	Withdrawn from the University % of total	Total	Awarded degree/ or eligible for other qualification % of total	Continuing as registered students in 2011/12 % of total	Withdrawn from the University % of total	Total									
UNIVERSITY TOTAL	1,573	27	4,199	71	141	2	5,913	1,468	26	4,078	71	193	3	5,739	1,488	27	3,897	70	188	3	5,573
BUILT ENVIRONMENT	200	26	538	71	20	3	758	212	28	527	69	26	3	765	216	28	524	68	25	3	765
Architectural Engineering	34	31	70	63	7	6	111	25	25	68	7	7	7	100	14	17	67	81	2	2	83
Civil Engineering	77	21	287	77	10	3	374	82	24	256	74	8	2	346	88	26	242	71	11	3	341
Construction Management & Surveying	63	38	102	61	1	1	166	78	38	118	58	9	4	205	72	34	136	64	6	3	214
Urban Studies	26	24	79	74	2	2	107	27	24	85	75	2	2	114	42	33	79	62	6	5	127
ENGINEERING & PHYSICAL SCIENCES	330	22	1,150	75	49	3	1,529	331	24	1,020	74	34	2	1,385	368	27	933	68	67	5	1,368
Chemical Engineering	58	18	258	79	11	3	327	52	18	225	78	10	3	287	38	16	191	79	14	6	243
Chemistry	55	23	181	74	8	3	244	59	26	159	71	5	2	223	77	32	155	64	10	4	242
Combined Studies (BSc/BEng)	33	28	78	67	6	5	117	30	27	81	72	2	2	113	48	37	75	57	8	6	131
Electrical, Electronic & Computer Engineering	34	18	152	79	6	3	192	47	28	119	70	3	2	169	56	31	104	58	19	11	179
Mechanical Engineering	114	25	340	74	5	1	459	97	23	316	75	9	2	422	93	23	299	74	13	3	405
Physics	36	19	141	74	13	7	190	46	27	120	70	5	3	171	56	33	109	65	3	2	168
LIFE SCIENCES	185	27	484	71	8	1	677	181	25	519	73	12	2	712	150	24	467	73	19	3	636
Biology	85	25	256	74	5	1	346	85	24	262	74	9	3	356	78	27	207	71	5	2	290
Psychology	66	23	212	75	3	1	281	36	15	206	84	3	1	245	34	18	148	79	6	3	188
Sport & Exercise Science	34	68	16	32			50	60	54	51	46			111	38	24	112	71	8	5	158
MANAGEMENT & LANGUAGES	438	28	1,060	69	40	3	1,538	375	25	1,054	71	58	4	1,487	414	29	971	68	36	3	1,421
Accountancy & Finance	115	32	234	65	13	4	362	102	27	263	70	11	3	376	108	28	276	71	7	2	391
Combined Studies (BA)	32	78	8	20	1	2	41	17	55	14	45	4	2	31	18	53	15	44	1	3	34
Economics	60	23	199	75	6	2	265	38	18	167	80	4	2	209	40	24	124	74	4	2	168
Languages	72	21	259	76	8	2	339	67	20	251	75	17	5	335	96	30	222	69	6	2	324
Management	146	31	317	67	9	2	472	135	30	301	66	17	4	453	138	33	276	65	8	2	422
Management (SBC)	13	22	43	73	3	5	59	16	19	58	70	9	11	83	14	17	58	71	10	12	82
MATHEMATICAL & COMPUTER SCIENCES	232	28	578	70	13	2	823	234	28	568	68	30	4	832	196	23	634	74	28	3	858
Actuarial Mathematics & Statistics	73	24	224	75	3	1	300	81	28	206	70	7	2	294	60	20	234	79	3	1	297
Computer Science	64	28	160	71	1	3	225	70	27	173	67	15	6	258	55	21	195	74	15	6	265
Mathematics	95	32	194	65	9	3	298	83	30	189	68	8	3	280	81	27	205	69	10	3	296
TEXTILES & DESIGN	188	32	389	66	11	2	588	135	24	390	70	33	6	558	144	27	368	70	13	2	525
Combined Studies	2	40	3	60			5	2	67	1	33			3	5	38	7	54	1	8	13
Textiles & Design	186	32	386	66	11	2	583	133	24	389	70	33	6	555	139	27	361	71	12	2	512

Includes full and part-time students. Includes home students on a year abroad as part of their studies. Excludes registered incoming exchange and non-graduating students.

Withdrawal figures include those who have left the University for either academic or personal reasons.

"Other qualifications" include the Diploma and the Certificate of Higher Education.

UNDERGRADUATE STUDENT PROGRESSION: 2010/11 - 2013/14

FRESHERS ONLY: On-Campus - Scotland

SCHOOL: Programme	2012/13 to 2013/14				2011/12 to 2012/13				2010/11 to 2011/12			
	Awarded degree/ for other qualification % of total	Continuing as registered students in 2013/14 % of total	Withdrawn from the University % of total	Total	Awarded degree/ for other qualification % of total	Continuing as registered students in 2012/13 % of total	Withdrawn from the University % of total	Total	Awarded degree/ for other qualification % of total	Continuing as registered students in 2011/12 % of total	Withdrawn from the University % of total	Total
UNIVERSITY TOTAL	98	1,572	108	1,778	135	1,555	150	1,840	116	1,217	152	1,485
BUILT ENVIRONMENT	7	194	16	217	9	199	20	228	10	147	17	174
Architectural Engineering	3	29	5	37	1	26	5	32	1	26	2	29
Civil Engineering	3	112	9	124	4	90	8	102	1	53	7	61
Construction Management & Surveying	1	33	1	35	4	49	6	59	3	44	3	50
Urban Studies	3	20	1	21	7	34	3	35	5	24	5	34
ENGINEERING & PHYSICAL SCIENCES	31	415	41	487	61	369	24	454	55	298	54	407
Chemical Engineering	2	88	8	98	2	90	8	100	1	65	10	76
Chemistry	13	75	7	95	18	58	4	80	8	54	7	69
Combined Studies (BSc/BEng)	4	17	2	23	6	26	1	23	15	15	6	21
Electrical, Electronic & Computer Engineering	4	59	6	69	13	49	3	65	12	40	19	71
Mechanical Engineering	2	117	5	124	8	105	6	119	8	85	9	102
Physics	6	59	13	78	14	50	3	67	26	39	3	68
LIFE SCIENCES	5	141	6	152	13	223	9	245	9	140	17	166
Biology	3	71	3	77	13	125	7	145	8	65	5	78
Psychology	2	70	3	75	9	98	2	100	10	56	5	61
Sport & Exercise Science	3	3	4	7	9	98	2	100	1	19	7	27
MANAGEMENT & LANGUAGES	26	420	26	472	33	426	50	509	17	295	29	341
Accountancy & Finance	3	83	11	97	5	103	8	116	3	74	5	82
Combined Studies (BA)	1	100	1	1	4	89	7	90	4	90	6	91
Economics	2	81	5	88	2	69	4	75	2	36	4	42
Languages	96	96	4	100	3	103	15	121	1	80	5	86
Management	15	147	4	166	16	130	14	160	1	74	7	86
Management (Scottish Borders Campus)	5	13	2	20	7	21	9	37	5	31	8	44
MATHEMATICAL & COMPUTER SCIENCES	10	233	9	252	13	174	22	209	11	227	23	261
Actuarial Mathematics & Statistics	2	104	2	108	3	77	6	86	1	94	3	98
Computer Science	5	44	1	50	5	45	11	61	5	73	11	89
Mathematics	3	85	6	94	5	52	5	62	5	60	9	74
TEXTILES & DESIGN	19	169	10	198	6	164	25	195	14	110	12	136
Textiles & Design	19	169	10	198	6	164	25	195	14	110	12	136

Includes full- and part-time students. Includes home students on a year abroad as part of their studies. Excludes registered incoming exchange and non-graduating students.

Withdrawal figures include those who have left the University for either academic or personal reasons.

"Other qualifications" include the Diploma and the Certificate of Higher Education.

UNDERGRADUATE STUDENT PROGRESSION (Split UK and EU/ other overseas): 2012/13 - 2013/14

ALL YEARS: On-Campus - Scotland

SCHOOL: Programme	Awarded degree/ awarded or deemed eligible for other qualification			Continuing as registered students in 2013/14			Withdrawn from the University			Total										
	UK % of total	EU & Overseas % of total	Total	UK % of total	EU & Overseas % of total	Total	UK % of total	EU & Overseas % of total	Total	UK % of total	EU & Overseas % of total	Total								
UNIVERSITY TOTAL	1,182	26	391	30	1,573	3,317	72	882	67	4,199	98	2	43	3	141	4,597	78	1,316	22	5,913
BUILT ENVIRONMENT	157	26	43	30	200	443	72	95	66	538	13	2	7	5	20	613	87	145	19	758
Architectural Engineering	26	34	8	23	34	44	58	26	74	70	6	8	1	3	7	76	68	35	32	111
Civil Engineering	56	19	21	28	77	236	79	51	68	287	7	2	3	4	10	299	80	75	20	374
Construction Management & Surveying	54	36	9	50	63	94	64	8	44	102	1	1	6	6	1	148	89	18	11	166
Urban Studies	21	23	5	29	26	69	77	10	59	79	2	12	2	2	2	90	84	17	16	107
ENGINEERING & PHYSICAL SCIENCES	244	20	86	29	330	955	77	195	66	1,150	35	3	14	5	49	1,234	87	295	19	1,529
Chemical Engineering	49	18	9	16	58	217	80	41	75	258	6	2	5	9	11	272	83	55	17	327
Chemistry	40	20	15	33	55	152	77	29	63	181	6	3	2	4	8	198	81	46	19	244
Combined Studies (BSc/BEng)	26	27	7	35	33	66	68	12	60	78	5	5	1	5	6	97	83	20	17	117
Electrical, Electronic & Computer Engineering	23	16	11	21	34	114	81	38	73	152	3	2	3	6	6	140	73	52	27	192
Mechanical Engineering	82	22	32	36	114	284	77	56	62	340	3	1	2	2	5	369	80	90	20	459
Physics	24	15	12	38	36	122	77	19	59	141	12	8	1	3	13	158	83	32	17	190
LIFE SCIENCES	163	29	22	20	185	398	70	86	77	484	4	1	4	4	8	565	83	112	17	677
Biology	73	26	12	18	85	205	73	51	77	256	2	1	3	5	5	280	81	66	19	346
Psychology	57	24	9	20	66	177	75	35	78	212	2	1	1	2	3	236	84	45	16	281
Sport & Exercise Science	33	67	1	100	34	16	33	0	0	16	2	1	1	2	3	49	98	1	2	50
MANAGEMENT & LANGUAGES	276	26	162	35	438	769	72	291	62	1,060	27	3	13	3	40	1,072	70	466	30	1,538
Accountancy & Finance	77	30	38	33	115	173	67	61	59	234	9	3	4	4	13	259	72	103	28	362
Combined Studies (BA)	17	74	15	47	32	6	26	2	11	8	1	1	1	1	1	23	56	18	44	41
Economics	37	23	23	38	60	119	75	80	75	199	3	2	3	3	6	159	60	106	40	265
Languages	52	19	20	28	72	214	78	45	68	259	7	3	1	1	8	273	81	66	19	339
Management	85	27	61	42	146	223	71	94	59	317	5	2	4	3	9	313	66	159	34	472
Management (SBC)	8	18	5	38	13	34	76	9	64	43	3	7	3	3	3	45	76	14	24	59
MATHEMATICAL & COMPUTER SCIENCES	173	29	59	27	232	421	70	157	72	578	10	2	3	1	13	604	73	219	27	823
Actuarial Mathematics & Statistics	37	21	36	49	73	135	77	89	71	224	3	2	2	3	3	175	58	125	42	300
Computer Science	53	30	11	17	64	122	69	38	78	160	1	1	1	1	1	176	78	49	22	225
Mathematics	83	33	12	13	95	164	65	30	67	194	6	2	3	7	9	253	85	45	15	298
TEXTILES & DESIGN	169	33	19	24	188	331	65	58	73	389	9	2	2	3	11	509	87	79	13	588
Combined Studies	1	25	1	1	2	3	75	58	74	3	3	2	2	3	11	4	80	1	20	5
Textiles & Design	168	33	18	10	186	328	65	58	74	386	9	2	2	3	11	505	87	78	13	583

UNDERGRADUATE STUDENT PROGRESSION: 2010/11 to 2013/14
ALL YEARS: On-Campus - Dubai

SCHOOL: Programme	2012/13 to 2013/14			2011/12 to 2012/13			2010/11 to 2011/12			Total											
	Awarded degree/ for other qualification % of total	Continuing as registered students in 2012/13 % of total	Withdrawn from the University % of total	Awarded degree/ for other qualification % of total	Continuing as registered students in 2011/12 % of total	Withdrawn from the University % of total	Awarded degree/ for other qualification % of total	Continuing as registered students in 2010/11 % of total	Withdrawn from the University % of total												
UNIVERSITY TOTAL	518	26	1,321	67	146	7	1,985	22	1,115	71	125	8	1,581	183	16	788	77	54	5	1,025	
BUILT ENVIRONMENT	50	24	141	67	19	9	210	8	110	80	17	12	138	21	25	50	60	12	14	83	
Architectural Engineering	3	5	53	95			56		21	91	2	9	23								
Civil Engineering	23	19	84	69	15	12	122	7	74	80	11	12	92	1	2	45	82	3	6	49	
Construction Management & Surveying	24	75	4	73	4	73	32	4	17	15	65	4	17	20	59	5	15	9	26	34	
ENGINEERING & PHYSICAL SCIENCES	116	24	347	71	24	5	487	81	21	283	76	13	387	45	16	213	78	16	6	274	
Combined Studies (BScBEng)	7	26	15	56	5	19	27	1	14	5	71	1	14	7							
Electrical, Electronic & Computer Engineering	38	27	99	69	6	4	143	38	29	88	66	7	133	16	18	69	79	2	2	87	
Mechanical Engineering	71	22	233	74	13	4	317	42	17	200	81	5	247	29	16	144	77	14	7	187	
LIFE SCIENCES	1	2	52	93	3	5	56	1	4	17	65	8	31	26							
Psychology	1	2	52	93	3	5	56	1	4	17	65	8	31	26							
MANAGEMENT & LANGUAGES	312	31	624	62	71	7	1,007	241	27	595	66	67	7	903	113	18	479	78	22	4	614
Accountancy & Finance	131	29	303	67	17	4	451	100	26	274	71	13	387	24	12	172	86	5	2	201	
Management	181	33	321	58	54	10	556	141	27	321	62	54	10	516	89	22	307	74	17	4	413
MATHEMATICAL & COMPUTER SCIENCES	2	4	46	81	9	16	57			16	73	6	27	22							
Computer Science	2	4	46	81	9	16	57			16	73	6	27	22							
TEXTILES & DESIGN	37	22	111	66	20	12	168	7	7	84	80	14	13	105	4	7	46	85	4	7	54
Textiles & Design	37	22	111	66	20	12	168	7	7	84	80	14	13	105	4	7	46	85	4	7	54

Includes full- and part-time students. Excludes registered incoming exchange and non-graduating students.
 Withdrawal figures include those who have left the University for either academic or personal reasons.

UNDERGRADUATE STUDENT PROGRESSION: 2010/11 to 2013/14
FRESHERS ONLY: On-Campus - Dubai

SCHOOL: Programme	2012/13 to 2013/14			2011/12 to 2012/13			2010/11 to 2011/12			Total											
	Awarded degree/ for other qualification % of total	Continuing as registered students in 2012/13 % of total	Withdrawn from the University % of total	Awarded degree/ for other qualification % of total	Continuing as registered students in 2011/12 % of total	Withdrawn from the University % of total	Awarded degree/ for other qualification % of total	Continuing as registered students in 2010/11 % of total	Withdrawn from the University % of total												
UNIVERSITY TOTAL	84	10	671	79	90	11	845	70	9	637	80	91	11	798	41	7	472	85	43	8	556
BUILT ENVIRONMENT	10	11	70	76	12	13	92	4	4	72	80	14	16	90	9	16	37	67	9	16	55
Architectural Engineering	1	3	33	97			34			21	91	2	9	23							
Civil Engineering	1	2	35	74	11	23	47	4	8	36	75	8	17	48	1	3	32	89	3	8	36
Construction Management & Surveying	8	73	2	78	1	9	11			15	79	4	21	19	8	42	5	26	6	32	19
ENGINEERING & PHYSICAL SCIENCES	14	7	166	84	18	9	198	15	8	154	87	8	5	177	2	2	109	90	10	8	121
Electrical, Electronic & Computer Engineering	10	16	46	74	6	10	62	11	17	50	76	5	8	66	1	3	31	91	2	6	34
Mechanical Engineering	4	3	120	88	12	9	136	4	4	104	94	3	3	111	1	1	78	90	8	9	87
LIFE SCIENCES			39	96	1	3	40	1	4	17	65	8	31	26							
Psychology			39	96	1	3	40	1	4	17	65	8	31	26							
MANAGEMENT & LANGUAGES	57	14	300	75	43	11	400	50	12	328	78	45	11	423	29	8	295	86	20	6	344
Accountancy & Finance	7	5	133	90	8	5	148	8	5	147	90	9	5	164	3	3	101	94	4	4	108
Management	50	20	167	66	35	14	252	42	16	181	70	36	14	259	26	11	194	82	16	7	236
MATHEMATICAL & COMPUTER SCIENCES	1	2	33	79	8	19	42			15	71	6	29	21							
Computer Science	1	2	33	79	8	19	42			15	71	6	29	21							
TEXTILES & DESIGN	2	3	63	86	8	11	73			51	84	10	16	61	1	3	31	86	4	11	36
Textiles & Design	2	3	63	86	8	11	73			51	84	10	16	61	1	3	31	86	4	11	36

GRADUATE FIRST DESTINATIONS (FIRST DEGREES): 2009/10 - 2012/13

SCHOOL/DIVISION	2012/13 (January 2014 census)										2011/12 (January 2013 census)																																						
	No of Known Dest (KD)	No in Emp	% of KD	No in Further Study	% of KD	Emp/Study (note 1)	Not Available/Not Seeking	% of KD	Seeking	% of KD	Total in Emp	No in Emp	% of KD	No in Further Study	% of KD	Emp/Study (note 1)	Not Available/Not Seeking	% of KD	Seeking	% of KD	Total in Emp	No in Emp	% of KD	No in Further Study	% of KD	Emp/Study (note 1)	Not Available/Not Seeking	% of KD	Seeking	% of KD	Total in Emp	No in Emp	% of KD	No in Further Study	% of KD	Emp/Study (note 1)	Not Available/Not Seeking	% of KD	Seeking	% of KD	Total in Emp	No in Emp	% of KD	No in Further Study	% of KD	Emp/Study (note 1)	Not Available/Not Seeking	% of KD	Seeking
UNIVERSITY TOTAL	830	637	77	119	14	94	22	3	52	6	625	473	76	797	590	74	129	16	94	30	4	47	6	797	467	59																							
BUILT ENVIRONMENT	114	99	87	11	10	98	2	2	2	2	99	86	87	120	100	83	6	5	93	6	5	8	7	120	94	78																							
Architectural Engineering	13	10	77	2	15	92	1	1	1	8	10	9	90	12	11	83	2	4	89	3	6	5	10	12	10	83																							
Construction Management & Surveying	46	41	89	2	4	98	2	4	1	2	41	35	85	50	40	80	2	4	89	3	6	5	10	50	38	76																							
Civil Engineering	38	35	92	3	8	100					35	32	91	40	35	88	2	5	97	2	5	1	3	40	33	83																							
Urban Studies	17	13	76	4	24	100					13	10	77	18	14	78	2	11	94	1	6	1	6	18	13	72																							
LIFE SCIENCES	107	72	67	24	22	93	4	4	7	7	72	40	56	113	65	58	30	27	91	9	8	9	8	113	35	31																							
Biological Sciences	43	26	61	12	28	90	1	2	4	9	26	16	62	53	29	55	12	23	84	4	8	8	15	53	18	34																							
Psychology	37	24	65	11	30	95	2	5	2	5	24	12	50	20	13	65	3	15	94	3	15	1	5	20	8	40																							
Sport & Exercise Science	27	22	81	1	4	96	3	11	1	4	22	12	55	40	23	58	15	38	100	2	5			40	9	23																							
ENGINEERING & PHYSICAL SCIENCES	168	114	68	40	24	92	1	1	13	8	114	93	82	152	97	64	44	29	95	2	1	8	5	152	78	51																							
Chemical Engineering	40	31	78	8	20	98	1	2	1	2	31	27	87	33	27	82	5	15	97	1	3	33	24	73																									
Chemistry	26	13	50	11	42	92	2	8	2	8	13	7	54	26	13	50	12	46	100			1	3	26	8	31																							
Mechanical Engineering	67	52	78	11	16	94	4	6	4	6	52	47	90	52	35	67	14	27	94	3	6	3	6	52	31	60																							
Physics	15	5	33	9	60	93	1	7	1	7	5	2	40	21	9	43	9	43	90	1	2	2	10	21	4	19																							
Electrical, Electronic & Computer Engineering	12	9	75	1	8	91	1	8	1	8	9	8	89	17	12	71	3	18	94	1	6	1	6	17	11	65																							
Combined Studies	8	4	50			50					4	2	50	3	1	33	1	33	67			1	33	3																									
MANAGEMENT & LANGUAGES	169	133	79	16	9	83	9	5	11	7	133	91	68	185	137	74	25	14	92	9	5	14	8	185	105	57																							
Accountancy & Finance	47	43	91	2	4	100	2	4			43	31	72	47	35	74	5	11	93	4	9	3	6	47	26	55																							
Economics	23	17	74	3	13	100	3	13			17	13	76	18	13	72	1	6	82	1	6	3	17	18	11	61																							
Management	55	46	84	3	5	94	3	5	3	5	46	31	67	74	55	74	11	15	93	3	4	5	7	74	39	53																							
Management (Scottish Borders Campus)	4	3	75			75					3	1	33	3	3	100								3	2	67																							
Languages	35	23	66	7	20	88	1	3	4	11	23	14	61	39	28	72	7	18	92	1	3	3	8	39	25	64																							
Combined Studies	5	1	20	1	20	40					1	1	100	4	3	75	1	25	100					4	2	50																							
MATHEMATICAL & COMPUTER SCIENCES	137	106	77	21	15	89	9	10	7	10	94	80	85	123	94	76	20	16	94	2	2	7	6	123	78	63																							
Actuarial Mathematics & Statistics	36	31	86	4	11	97	1	3	1	3	31	27	87	40	34	85	5	13	100	1	3	6	6	40	34	85																							
Computer Science	39	32	82	4	10	92	3	8	3	8	32	26	81	36	28	72	4	11	86	1	3	5	14	36	23	64																							
Mathematics	62	43	69	13	21	90	6	10	6	10	31	27	87	47	34	72	11	23	96	2	2	2	4	47	21	45																							
TEXTILES & DESIGN	135	113	84	7	5	93	6	4	9	7	113	83	73	104	97	93	4	4	99	2	2	1	1	104	77	74																							
Combined Studies	1	1	100			100					1	1	100	1	1	100			100					1	1	100																							
Textiles	134	112	84	7	5	93	6	4	9	7	112	83	74	103	96	93	4	4	99	2	2	1	1	103	76	74																							

The census date for graduate first destinations is 6 months following graduation

'Employed' includes those due to start employment within the next month. 'Other' includes those who are not available for employment because of travel, family commitments, health or other reasons

Note 1: This is the percentage of those in employment and/or further study as against the aggregated total who are in employment and/or further study or reported as 'seeking'

Note 2: Graduate Employment is based on the SOC 2000 classification of occupations for studying the graduate labour market (Institute for Employment Research, Warwick)

SCHOOL/Division	2010/11 (January 2012 census)												2009/10 (January 2011 census)													
	No of Known Dest (KD)	No in Emp	% of KD	No in Further Study	% of KD	% in Emp/Study (note 1)	Not Available/Not Seeking	% of KD	Seeking	% of KD	Total/ Emp	No in Graduate Level Job	% in Graduate Level Job (note 2)	No of Known Dest (KD)	No in Emp	% of KD	No in Further Study	% of KD	% in Emp/Study (note 1)	Not Available/Not Seeking	% of KD	Seeking	% of KD	Total/ Emp	No in Graduate Level Job	% in Graduate Level Job (note 2)
UNIVERSITY TOTAL	723	521	72	128	18	94	32	4	42	6	521	378	73	723	511	71	116	16	92	45	6	54	7	511	373	73
BUILT ENVIRONMENT	123	100	81	13	11	94	3	2	7	6	100	84	84	99	67	68	9	9	84	8	8	15	15	67	45	67
Architectural Engineering	8	5	63	2	25	100	1	13			5	5	100	35	24	69	3	9	82	2	6	6	17	24	17	71
Construction Management & Surveying	42	34	81	4	10	93	1	2	3	7	34	27	79	42	30	71	4	10	87	3	7	5	12	30	21	70
Civil Engineering	49	44	90	2	4	96	1	2	2	4	44	37	84	22	13	59	2	9	79	3	14	4	18	13	7	54
Urban Studies	24	17	71	5	21	92		0	2	8	17	15	88	92	60	65	15	16	93	11	12	6	7	60	31	52
LIFE SCIENCES	81	45	56	22	27	91	7	9	7	9	45	19	42	39	18	46	11	18	85	5	13	5	13	18	10	56
Biological Sciences	39	18	46	11	28	85	5	13	5	13	18	10	56	20	15	68	6	27	100	1	5	20	3	20	3	20
Psychology	22	15	68	6	27	100	1	5	2	10	12	6	50	23	17	59	4	14	84	4	14	4	14	17	6	35
Sport & Exercise Science	20	12	60	5	25	89	1	5	2	10	12	6	50	162	97	60	46	28	91	5	3	14	9	97	72	74
ENGINEERING & PHYSICAL SCIENCES	163	106	65	43	26	93	3	2	11	7	106	80	75	162	97	60	46	28	91	5	3	14	9	97	72	74
Chemical Engineering	22	18	82	4		100					18	15	83	24	18	75	4		92					18	16	89
Chemistry	47	24	51	19	40	91			4	9	24	18	75	33	15	45	14	42	94	2	6	2	6	15	8	53
Mechanical Engineering	35	28	80	6	17	100	1	3			28	24	86	57	36	63	14	25	91	2	4	5	9	36	29	81
Physics	19	9	47	9	47	95			1	5	9	4	44	18	10	56	5	28	88	1	6	2	11	10	6	60
Electrical, Electronic & Computer Engineering	26	19	73	3	12	88	1	4	3	12	19	16	84	21	14	67	5	24	90					14	11	79
Combined Studies	14	8	57	2	14	77	1	7	3	21	8	3	38	9	4	44	4	44	89					4	2	50
MANAGEMENT & LANGUAGES	169	127	75	24	14	95	10	6	8	5	127	91	72	166	128	77	21	13	96	10	6	7	4	128	95	74
Accountancy & Finance	45	37	82	4	9	98	3	7	1	2	37	24	65	59	48	81	6	10	92					48	38	79
Economics	18	8	44	7	39	88	1	6	2	11	8	3	38	22	13	59	5	23	100	4	18			13	9	69
Management	55	42	76	7	13	96	4	7	2	4	42	33	79	55	41	75	9	16	98	4	7	1	2	41	26	63
Management (Scottish Borders Campus)	2	2	100								2	1	50	2	2	100								2	2	100
Languages	44	35	80	5	11	95	2	5	2	5	35	27	77	27	23	85	1	4	96	2	7	1	4	23	19	83
Combined Studies	5	3	60	1		80			1	20	3	3	100	1	1	100			100					1	1	100
MATHEMATICAL & COMPUTER SCIENCES	95	69	73	14	15	91	4	4	8	8	69	53	77	119	91	76	16	13	93	8	7	8	7	91	80	88
Actuarial Mathematics & Statistics	17	15	88		0	94	1	6	1	6	15	14	93	46	39	85	1	2	89	5	11	5	11	39	39	100
Computer Science	33	22	67	7	21	91	1	3	3	9	22	19	86	40	28	70	8	20	95	2	5	2	5	28	24	86
Mathematics	45	32	71	7	16	91	2	4	4	9	32	20	63	33	24	73	7	21	97	1	3	1	3	24	17	71
TEXTILES & DESIGN	92	74	80	12	13	99	5	5	1	1	74	51	69	85	68	80	9	11	95	3	4	4	5	68	50	74
Combined Studies	2	2	100			100					2	2	100	85	68	80	9	11	95	3	4	4	5	68	50	74
Textiles	90	72	80	12	13	99	5	6	1	1	72	49	68	85	68	80	9	11	95	3	4	4	5	68	50	74

The census date for graduate first destinations is 6 months following graduation

'Employed' includes those due to start employment within the next month. 'Other' includes those who are not available for employment because of travel, family commitments, health or other reasons

Note 1: This is the percentage of those in employment and/or further study as against the aggregated total who are in employment and/or further study or reported as 'seeking'

Note 2: Graduate Employment is based on the SOC 2000 classification of occupations for studying the graduate labour market (Institute for Employment Research, Warwick)

	1. Staff are good at explaining things.	2. Staff have made the subject interesting.	3. Staff are enthusiastic about what they are teaching.	4. The course is intellectually stimulating.	5. The criteria used in marking have been clear in advance.	6. Assessment arrangements and marking have been fair.	7. Feedback on my work has been prompt.	8. I have received detailed comments on my work.	9. Feedback on my work has helped me clarify things I did not understand.	10. I have received sufficient advice and support with my studies.	11. I have been able to contact staff when I needed to.	12. Good advice was available when I needed to make study choices.	13. The timetable works efficiently as far as my activities are concerned.	14. Any changes in the course or teaching have been communicated effectively.	15. The course is well organised and is running smoothly.	16. Learning resources are good enough for my needs.	17. I have been able to access general IT resources when I needed to.	18. I have been able to access specialised equipment, facilities or rooms when I needed.	19. The course has helped me to present myself with confidence.	20. My communication skills have improved.	21. As a result of the course, I feel confident in tackling unfamiliar problems.	Average (22 Questions)			
UNIVERSITY AVERAGE ALL SUBJECTS 2013	87	92	82	88	86	75	81	83	72	69	71	83	84	87	84	81	85	86	83	85	82	87	85	90	83
UNIVERSITY AVERAGE ALL SUBJECTS 2012	88	92	84	90	88	76	79	84	73	71	73	85	87	85	84	86	87	89	83	85	83	86	85	91	84
UNIVERSITY AVERAGE ALL SUBJECTS 2011	86	91	82	86	86	67	77	80	61	56	60	81	80	81	81	78	85	87	84	81	79	82	81	86	79
UNIVERSITY AVERAGE ALL SUBJECTS 2010	84	90	79	83	84	63	75	76	54	52	57	79	84	78	73	78	80	77	81	79	84	80	87	76	
LIFE SCIENCES																									
Biology	89	93	79	96	89	76	75	82	82	75	68	90	93	89	96	88	93	86	85	80	75	79	86	100	86
2012	84	86	81	81	89	70	75	86	50	70	67	82	78	94	75	76	76	75	74	80	89	79	89	79	
2011	94	96	88	96	96	70	69	81	46	73	81	90	92	88	88	77	85	86	77	92	88	85	92	88	84
2010	86	97	81	84	81	71	86	86	49	49	86	73	86	89	78	89	87	86	95	79	83	76	78	92	80
Psychology	78	90	71	78	73	71	86	84	55	66	64	78	74	74	74	66	87	81	91	90	80	79	84	77	81
2012	96	94	96	96	100	83	92	88	77	79	94	95	100	88	84	91	100	88	91	88	96	88	92	90	90
2011	94	94	94	92	95	76	91	85	70	62	74	91	85	99	90	85	91	88	71	92	94	90	92	81	80
2010	95	97	89	100	92	77	88	86	60	72	81	91	89	94	89	84	88	83	82	89	86	97	83	97	88
Sport & Exercise Science	81	85	76	84	79	69	84	88	50	57	68	75	78	81	65	81	71	91	82	67	59	62	82	75	69
2012	91	89	90	97	87	64	93	80	27	63	57	86	87	90	82	83	83	83	83	82	70	87	89	88	83
2011	89	90	85	93	88	80	94	93	59	74	79	77	71	84	78	72	68	84	63	85	81	87	79	76	76
2010	84	100	67	91	80	58	68	62	58	46	57	83	75	100	74	66	64	68	71	72	71	83	62	70	71
MANAGEMENT & LANGUAGES																									
Accountancy & Finance	92	95	91	94	89	81	87	84	82	73	79	86	90	92	75	91	87	93	92	89	92	91	84	93	92
2012	87	91	80	95	84	82	82	89	81	82	78	85	85	86	83	91	88	94	91	85	90	88	77	86	86
2011	91	99	84	90	90	58	81	85	46	39	37	82	84	87	74	89	84	90	92	76	77	72	80	90	91
2010	87	94	82	82	90	55	81	79	46	39	31	74	74	78	69	70	77	57	77	70	81	62	67	86	84
Economics	87	88	77	96	87	83	87	90	87	71	79	90	90	98	83	87	77	92	92	91	94	88	89	92	90
2011/12	86	90	83	83	88	67	68	80	70	60	56	82	83	89	73	77	68	74	88	73	73	78	70	75	74
2011	85	91	81	82	87	56	68	82	56	41	43	84	84	97	72	75	68	68	87	72	75	72	70	74	78
2010	90	100	77	90	94	72	77	94	61	61	68	88	97	84	84	92	87	97	94	82	84	81	81	95	94
Languages	91	93	86	93	91	79	90	73	71	86	78	80	77	86	77	83	93	80	78	86	81	91	85	91	85
2012	87	95	83	83	88	77	85	70	70	82	77	84	88	93	70	73	83	76	60	91	88	93	92	89	88
2011	88	94	84	87	86	67	80	65	58	67	64	78	78	84	72	74	73	78	72	85	75	91	90	83	82
2010	94	97	94	94	91	62	91	64	36	67	55	81	82	88	74	74	91	64	67	53	39	55	66	95	94
Management	88	95	85	86	88	75	84	83	69	68	68	76	78	81	69	86	88	87	84	77	81	76	73	88	84
2012	86	93	79	93	78	79	88	84	74	76	70	79	87	89	88	86	74	75	75	73	90	88	93	88	82
2011	85	92	85	84	78	58	78	70	47	47	47	71	71	81	61	77	69	79	82	71	72	73	68	82	80
2010	86	95	83	92	74	58	72	79	47	42	48	81	82	90	70	86	88	90	80	65	68	62	64	84	83
TEXTILES & DESIGN																									
Textiles & Design	70	68	68	68	78	48	56	68	33	41	44	65	65	66	65	58	80	54	41	79	82	78	78	75	73
2012	87	84	85	87	91	67	76	76	81	56	59	63	80	77	61	80	80	89	75	75	93	95	94	88	83
2011	77	76	76	81	77	58	71	76	51	49	43	68	69	72	64	68	82	65	58	88	88	94	80	74	71
2010	71	65	74	69	77	52	58	68	43	49	43	57	57	55	58	62	72	62	51	64	69	67	56	75	72

		1. Staff are good at explaining things.	2. Staff have made the subject interesting.	3. Staff are enthusiastic about what they are teaching.	4. The course is intellectually stimulating.	5. The criteria used in marking have been clear in advance.	6. Assessment arrangements and marking have been fair.	7. Feedback on my work has been prompt.	8. I have received detailed comments on my work.	9. Feedback on my work has helped me clarify things I did not understand.	10. I have received sufficient advice and support with my studies.	11. I have been able to contact staff when I needed to.	12. Good advice was available when I needed to make study choices.	13. The timetable works efficiently as far as my activities are concerned.	14. Any changes in the course or teaching have been communicated effectively.	15. The course is well organised and is running smoothly.	16. Learning resources are good enough for my needs.	17. I have been able to access general IT resources when I needed to.	18. I have been able to access specialised equipment, facilities or rooms when I needed.	19. The course has helped me to present myself with confidence.	20. My communication skills have improved.	21. As a result of the course, I feel confident in tackling unfamiliar problems.	Average (22 Questions)										
BUILT ENVIRONMENT	Construction & Management Surveying	2013	86	95	70	95	85	77	90	90	73	70	60	88	88	80	88	84	85	90	77	78	73	83	80	88	83						
		2012	81	90	76	84	76	61	67	65	63	47	60	77	82	84	64	82	90	80	78	92	90	98	87	76	67	84	78	86	77		
		2011	77	90	71	78	71	55	85	66	46	34	44	73	78	83	80	71	89	90	93	84	81	78	85	80	80	74	80	86	74		
		2010	77	88	70	79	73	51	82	64	42	24	42	71	73	70	70	61	85	64	33	86	94	82	83	82	88	76	85	70			
		2013	96	100	93	99	92	88	94	93	86	81	87	93	96	93	90	91	96	95	97	97	95	93	94	97	99	93	93				
		2012	90	98	84	94	85	83	80	89	82	83	81	91	93	93	87	90	92	88	91	95	90	92	90	94	92	90	90	85			
		2011	88	92	84	88	89	77	80	87	74	66	76	85	82	90	82	87	91	81	89	91	90	90	92	87	86	88	89	90	85		
		2010	88	96	88	80	88	62	69	82	62	46	53	89	91	90	86	89	91	85	91	89	85	92	89	93	97	96	87	96	84		
		2013	81	89	74	81	78	81	89	78	89	77	72	88	89	85	88	78	85	89	78	88	89	78	88	94	89	100	93	81	85		
		2012	96	96	96	92	100	93	88	96	96	96	88	93	92	92	96	95	100	92	92	95	92	96	96	91	88	92	92	96	94	94	
2011	81	93	69	79	83	79	86	79	83	79	66	85	83	97	74	80	83	86	72	87	93	86	82	89	90	93	83	86	83	86			
2010	62	65	46	54	81	46	65	35	27	54	50	61	46	88	48	62	85	58	42	71	65	85	61	73	62	73	85	54	60				
ENGINEERING & PHYSICAL SCIENCES	Chemistry	2013	96	100	91	95	100	92	91	91	94	88	97	97	98	100	92	98	97	97	100	95	88	100	97	92	88	91	97	100	95		
		2012	97	97	97	97	94	93	97	92	92	96	94	97	97	90	95	94	93	97	97	94	97	91	97	94	97	91	94	97	94	94	
		2011	94	98	91	93	94	86	82	98	81	76	92	91	89	98	86	92	88	98	89	93	86	97	95	90	88	87	93	94	91	91	
		2010	90	94	92	85	89	80	76	87	82	81	76	91	92	97	82	81	89	92	91	86	85	86	87	79	78	80	78	94	86	86	
		2013	93	100	88	94	91	85	89	89	83	82	85	94	100	97	85	95	100	97	89	92	94	92	89	93	91	94	94	94	92	92	
		2012	97	96	96	100	96	88	96	87	80	88	90	95	96	96	93	92	96	96	93	94	100	93	89	96	100	93	96	96	96	93	93
		2011	99	100	100	96	100	78	78	96	62	74	82	94	98	100	85	90	100	77	92	93	96	88	96	92	92	88	88	96	100	91	
		2009/10	93	100	85	90	97	68	81	81	47	63	69	94	98	90	93	78	93	74	67	80	82	81	78	90	92	92	85	100	84	84	
		2012/13	76	79	66	74	84	74	74	77	74	70	71	71	72	90	54	78	80	79	75	87	84	89	80	76	70	80	80	85	77	77	
		2012	81	87	66	79	91	74	70	74	81	66	77	74	70	91	62	86	89	85	83	89	91	91	87	73	70	74	74	83	79	83	
2011	89	88	80	96	92	61	76	80	49	37	64	75	72	88	64	80	92	80	68	93	92	92	96	86	84	84	88	84	79	84			
2010	78	76	80	68	88	57	60	79	48	44	56	83	84	92	72	77	84	68	80	88	88	88	88	77	76	80	76	76	75	75			
2013	89	97	83	94	83	68	74	81	64	55	69	87	88	90	83	85	91	87	79	84	87	82	82	87	82	82	92	92	83	83			
2012	92	94	89	94	93	82	82	92	79	73	83	93	94	96	90	90	91	92	88	93	97	93	89	96	95	97	96	98	91	93	82		
2011	90	95	90	89	85	64	75	76	50	51	68	86	81	95	82	82	89	78	78	89	88	92	88	88	85	88	91	93	82	82			
2010	86	94	82	85	84	58	71	81	41	42	55	80	80	83	79	80	80	83	79	78	82	77	85	85	88	89	88	93	79	79			
2012/13	95	97	95	95	94	84	81	87	94	76	85	89	86	97	82	91	94	91	88	91	94	90	89	89	87	90	88	94	90	90			
2011/12	93	94	94	85	97	84	80	87	93	75	81	88	81	97	86	91	97	94	82	91	94	90	86	89	87	91	86	88	89	89			
2010/11	78	79	67	81	84	62	79	76	56	51	81	83	82	95	79	73	84	88	91	72	77	74	85	73	74	74	85	73	74	76			
2009/10	77	82	62	85	78	51	71	68	38	29	46	82	68	97	79	95	71	73	82	85	91	67	72	68	79	70	73	72	72				
MATHEMATICAL & COMPUTER SCIENCES	Actuarial Mathematics & Statistics	2013	92	97	86	92	93	81	77	90	89	73	76	92	89	88	88	91	85	92	95	82	79	87	79	77	79	80	98	86	86		
		2012	93	89	86	92	93	81	76	93	87	72	79	89	86	98	85	87	80	89	93	87	86	91	84	75	72	73	79	80	97	86	
		2011	86	92	78	82	92	70	64	90	75	58	64	82	81	92	74	82	73	87	85	82	91	79	67	65	64	72	89	79	89	78	
		2010	88	97	77	80	88	72	75	84	79	49	75	85	86	95	74	88	79	93	92	78	71	66	75	66	75	73	94	81	84	81	
		2013	85	93	80	88	80	75	82	82	76	70	65	87	91	96	76	85	85	92	78	88	85	86	85	86	85	84	85	85	93	84	
		2012	67	73	61	61	73	43	50	54	48	34	28	69	73	77	57	61	71	59	54	71	69	77	66	73	65	73	81	61	62	62	
		2011	76	84	61	81	77	62	71	77	77	38	49	79	77	92	68	71	77	76	61	91	83	100	88	75	68	88	69	77	75	75	
		2010	81	96	70	81	74	53	52	63	59	37	52	80	78	89	73	76	100	63	67	91	81	96	66	74	67	74	81	74	74	74	

STAFF: 2011 - 2013

ALL STAFF BY CONTRACT TYPE: AT END DECEMBER 2013
Scottish Campuses

GRADE RANGE	End December 2013					End December 2012					End December 2011				
	ft/pt	Gender	No	% of category	% of all staff	ft/pt	Gender	No	% of category	% of all staff	ft/pt	Gender	No	% of category	% of all staff
University Total	1870					1785					1737				
Professional	ft	F	149	100	8	ft	F	147	100	8	ft	F	135	100	8
		M	21	14	1		M	18	12	1		M	13	10	1
	pt	F	110	74	6	pt	F	111	76	6	pt	F	108	80	6
		M	2	1			M	2	1			M	1	1	
			16	11	1			16	11	1			13	10	1
Academic (non-professional)	ft	F	391	100	21	ft	F	337	100	19	ft	F	345	100	19
		M	92	24	5		M	91	27	5		M	88	26	5
	pt	F	232	59	12	pt	F	198	59	11	pt	F	187	54	10
		M	39	10	2		M	29	9	2		M	40	12	2
			28	7	1			19	6	1			30	9	2
Research	ft	F	212	100	11	ft	F	217	100	12	ft	F	184	100	10
		M	45	21	2		M	46	21	3		M	36	20	2
	pt	F	149	70	8	pt	F	148	68	8	pt	F	122	66	7
		M	7	3			M	8	4			M	9	5	1
			11	5	1			15	7	1			17	9	1
Professional	ft	F	539	100	29	ft	F	536	100	30	ft	F	524	100	29
		M	190	35	10		M	200	37	11		M	191	36	11
	pt	F	245	45	13	pt	F	247	46	14	pt	F	251	48	14
		M	86	16	5		M	76	14	4		M	74	14	4
			18	3	1			13	2	1			8	2	
Secretarial/Clerical	ft	F	264	100	14	ft	F	244	100	14	ft	F	233	100	13
		M	128	48	7		M	123	50	7		M	117	50	7
	pt	F	17	6	1	pt	F	11	5	1	pt	F	12	5	1
		M	108	41	6		M	104	43	6		M	99	42	6
			11	4	1			6	2				5	2	
Technical	ft	F	36	100	2	ft	F	30	100	2	ft	F	32	100	2
		M	4	11			M	5	17			M	3	9	
	pt	F	25	69	1	pt	F	20	67	1	pt	F	21	66	1
		M	7	19			M	4	13			M	2	6	
								1	3				6	19	
Craft	ft	F	23	100	1	ft	F	24	100	1	ft	F	26	100	1
		M					M	24	100	1		M	26	100	1
	pt	F	22	96	1	pt	F				pt	F			
		M	1	4			M					M			
Manual	ft	F	256	100	14	ft	F	250	100	14	ft	F	258	100	14
		M	43	17	2		M	46	18	3		M	50	19	3
	pt	F	89	35	5	pt	F	86	34	5	pt	F	85	33	5
		M	110	43	6		M	103	41	6		M	108	42	6
			14	5	1			15	6	1			15	6	1

Dubai Campus

GRADE RANGE	End December 2013					End December 2012					End December 2011	
	ft/pt	Gender	No	% of category	% of all staff	ft/pt	Gender	No	% of category	% of all staff	No	
University Total	66					60					48	
Professional	ft	F	2	100	3	ft	F	3	100	5		
		M	1	50	2		M	3	100	5		
	pt	F	1	50	2	pt	F					
		M					M					
Academic (non-professional)	ft	F	50	100	76	ft	F	44	100	73		
		M	20	40	30		M	18	41	30		
	pt	F	29	58	44	pt	F	26	59	43		
		M	1	2	2		M					
Professional	ft	F	9	100	14	ft	F	10	100	17		
		M	6	67	9		M	7	70	12		
	pt	F	3	33	5	pt	F	3	30	5		
		M					M					
Secretarial/Clerical	ft	F	5	100	8	ft	F	3	100	5		
		M	2	40	3		M	2	67	3		
	pt	F	3	60	5	pt	F	1	33	2		
		M					M					

From 2012, the staff body in Dubai was counted by Grade Range

Malaysia Campus

GRADE RANGE	End December 2013				
	ft/pt	Gender	No	% of category	% of all staff
University Total	32				
Academic (non-professional)	ft	F	7	100	22
		M	7	100	22
	pt	F			
		M			
Professional	ft	F	22	100	69
		M	14	64	44
			7	32	22
	pt	F	1	5	3
		M			
Secretarial/Clerical	ft	F	3	100	9
		M	3	100	9
	pt	F			
		M			

Contact us

HERIOT-WATT UNIVERSITY

Edinburgh Campus

Edinburgh EH14 4AS

📞 0131 449 5111

Scottish Borders Campus

Galashiels TD1 3HF

📞 0870 050 5152

Orkney Campus

Old Academy, Back Road, Stromness

Orkney Islands

Scotland KW16 3AW

📞 01856 850 605

Dubai Campus

Dubai International Academic City

PO Box 294345

Dubai

UAE

📞 00 971 4 435 8700

Heriot-Watt University Malaysia

No 1 Jalan Venna P5/2

Precinct 5

62200 Putrajaya

Malaysia

📞 00 60 3 8894 3888

CORPORATE COMMUNICATIONS

📞 0131 451 3242

@ pr@hw.ac.uk

STUDENT RECRUITMENT AND ADMISSIONS

📞 0131 451 3451

@ edu.liaison@hw.ac.uk

RESEARCH AND ENTERPRISE SERVICES

📞 0131 451 3192

@ res@hw.ac.uk